

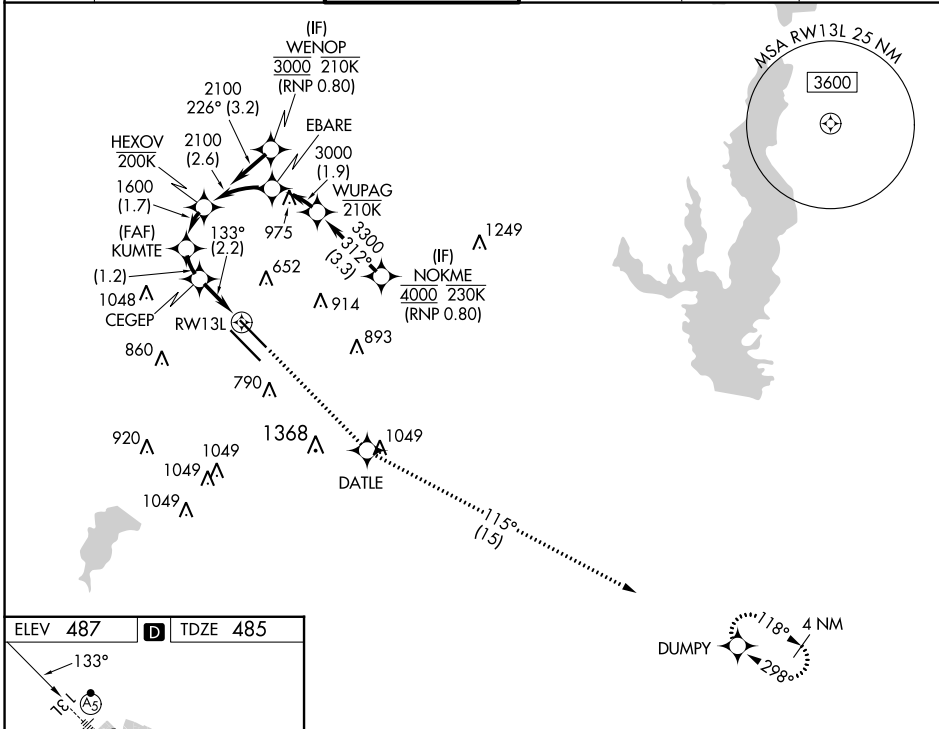
APP CRS	Rwy Idg	7352
133°	TDZE	485
	Apt Elev	487

RNAV (RNP) W RWY 13L

DALLAS LOVE FLD (DAL)

RNP AR APCH. RF required.		MALSR MISSED APPROACH: Climb to 3000 direct DATLE and on track 115° to DUMPY and hold.
Simultaneous approach authorized. For uncompensated Baro-VNAV systems, procedure NA below -6°C or above 54°C. For inop ALS, increase RNP 0.11 all Cats visibility to RVR 4500.		

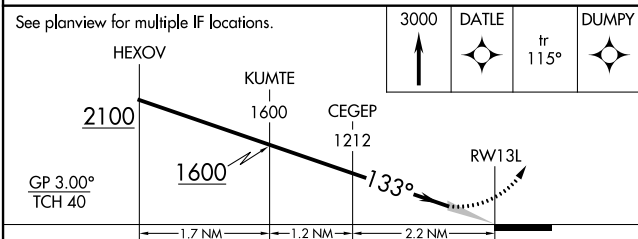
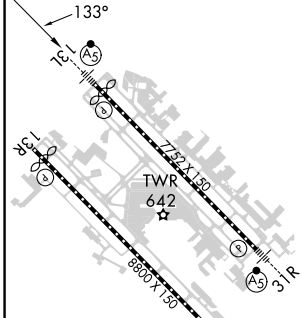
D-ATIS 120.15	REGIONAL APP CON NORTH 124.3 282.275 SOUTH 125.2 343.65	LOVE TOWER 123.7 239.3	GND CON 121.75 348.6	CLNC DEL 127.9	CPDLC
-------------------------	---	----------------------------------	--------------------------------	--------------------------	-------



SC-2, 05 SEP 2024 to 03 OCT 2024

SC-2, 05 SEP 2024 to 03 OCT 2024

ELEV 487	D	TDZE 485
-----------------	----------	-----------------



CATEGORY	A	B	C	D
RNP 0.11 DA	754/24		269 (300-1/2)	
RNP 0.30 DA	846/40		361 (400-3/4)	

TDZ/CL Rwy 13L and 31L
HIRL Rwy 13L-31R, and 13R-31L

RNAV (RNP) W RWY 13L