

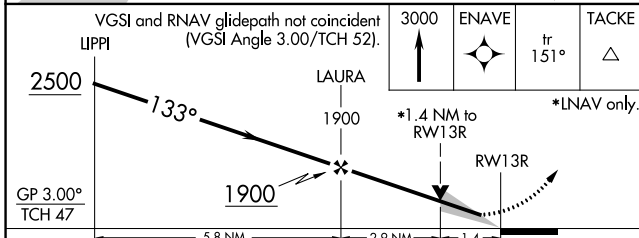
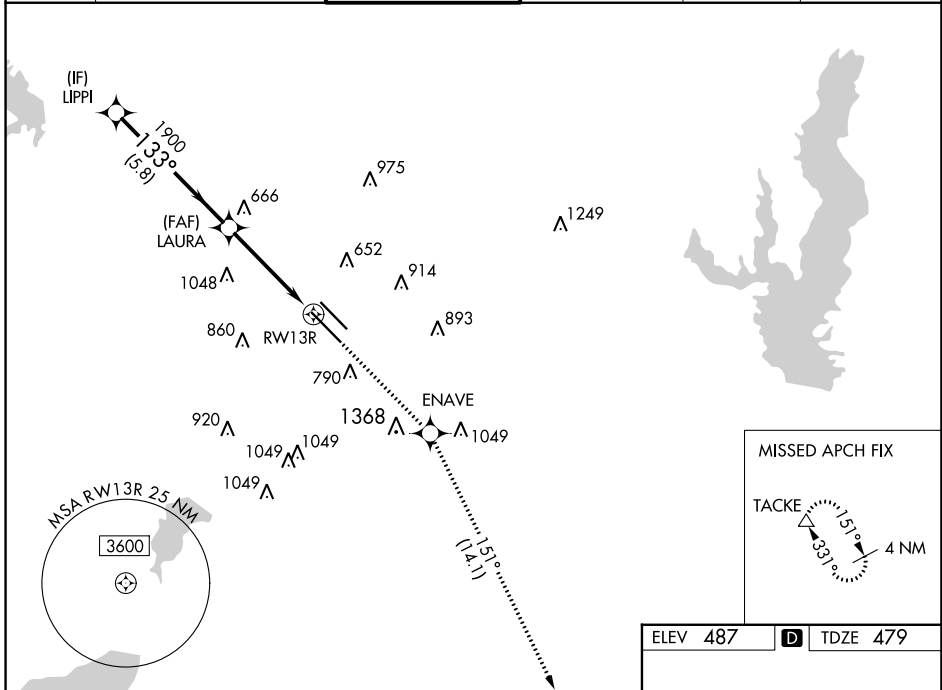
WAAS CH <b>82436</b> <b>W13A</b>	APP CRS <b>133°</b>	Rwy Idg TDZE <b>479</b> Apt Elev <b>487</b>	<b>8310</b>
--	------------------------	---	-------------

# RNAV (GPS) Z RWY 13R

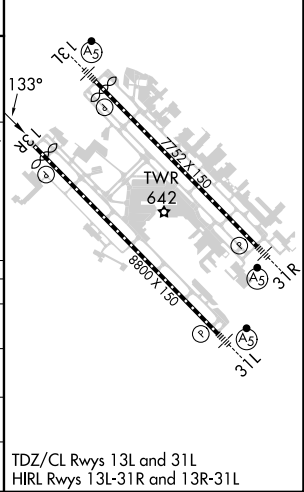
DALLAS LOVE FLD (DAL)

RNP APCH.	<p>Simultaneous approach authorized. Use of FD or AP providing RNAV track guidance required during simultaneous operations. LNAV procedure NA during simultaneous operations. For uncompensated Baro-VNAV systems, LNAV/VNAV NA below -6°C or above 54°C.</p>	<p>MISSED APPROACH: Climb to 3000 direct ENAVE and on track 151° to TACKE and hold.</p>
-----------	---	---

D-ATIS <b>120.15</b>	REGIONAL APP CON NORTH <b>124.3 282.275</b> SOUTH <b>125.2 343.65</b>	LOVE TOWER <b>123.7 239.3</b>	GND CON <b>121.75 348.6</b>	CLNC DEL <b>127.9</b>	CPDLC
-------------------------	---	----------------------------------	--------------------------------	--------------------------	-------



ELEV 487	<b>D</b> TDZE 479
----------	-------------------



CATEGORY	A	B	C	D
LPV DA		679/40	200 (200-¾)	
LNAV/VNAV DA		834/60	355 (400-1¼)	
LNAV MDA	980/55	501 (500-1)	980-1¾	501 (500-1¾)
<b>C</b> CIRCLING	1080-1 593 (600-1)	1140-1 653 (700-1)	1220-2 733 (800-2)	1520-3 1033 (1100-3)

TDZ/CL Rwy 13L and 31L  
HIRL Rwy 13L-31R and 13R-31L

SC-2, 05 SEP 2024 to 03 OCT 2024

SC-2, 05 SEP 2024 to 03 OCT 2024