

LOC I-DAB <b>109.7</b>	APP CRS <b>070°</b>	Rwy Idg TDZE Apt Elev	<b>9810</b> <b>30</b> <b>34</b>
---------------------------	------------------------	-----------------------------	---------------------------------------

# ILS or LOC RWY 7L

DAYTONA BEACH INTL (DAB)

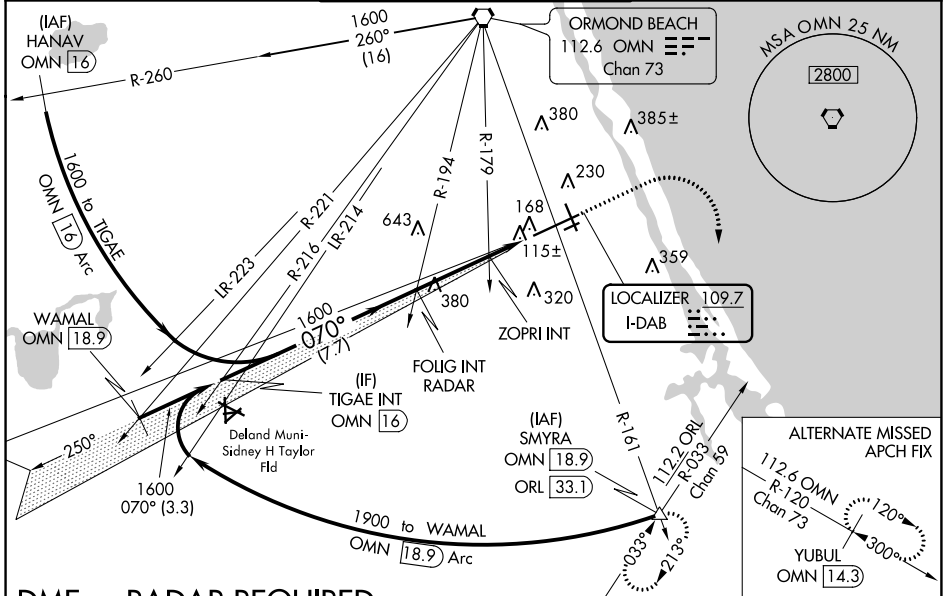
**⚠** Inoperative table does not apply to S-ILS 07L. Helicopter visibility reduction below RVR 4000 NA. For inop MALSR, increase S-LOC 07L Cat A and B and ZOPRI fix minimums S-LOC 07L all Cats visibility to RVR 5500. Autopilot coupled approach NA below 535.

MALSR



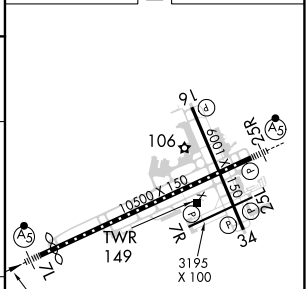
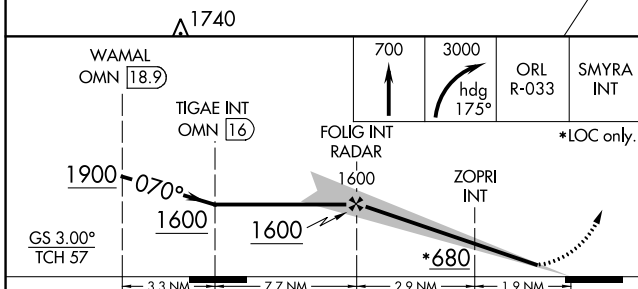
**MISSED APPROACH:** Climb to 700 then climbing right turn to 3000 on heading 175° and ORL VORTAC R-033 to SMYRA/ORL 33.1 DME and hold.

ATIS <b>132.875</b>	DAYTONA APP CON <b>125.8 269.075</b>	DAYTONA TOWER <b>120.7 257.8</b>	GND CON <b>121.9 348.6</b>	CLNC DEL <b>119.3</b>
------------------------	---	-------------------------------------	-------------------------------	--------------------------



**DME or RADAR REQUIRED**

ELEV 34	<b>D</b> TDZE 30
---------	------------------



CATEGORY	A	B	C	D
S-ILS 07L	230/40		200 (200-¾)	
S-LOC 07L	680/40	650 (700-¾)	680-1⅞	650 (700-1⅞)
<b>C</b> CIRCLING	680-1	646 (700-1)	646 (700-1⅞)	666 (700-2)
ZOPRI FIX MINIMUMS (DUAL VOR RECEIVERS REQUIRED)				
S-LOC 07L	380/40		350 (400-¾)	
<b>C</b> CIRCLING	540-1	506 (600-1)	680-1¼ 646 (700-1¼)	700-2 666 (700-2)

TDZ/CL Rwy 7L					
HIRL Rwy 7L-25R					
MIRL Rwy 7R-25L and 16-34					
REIL Rwy 7R, 16, 25L and 34					
FAF to MAP 4.8 NM					
Knots	60	90	120	150	180
Min:Sec	4:48	3:12	2:24	1:55	1:36

SE-3, 05 SEP 2024 to 03 OCT 2024

SE-3, 05 SEP 2024 to 03 OCT 2024