

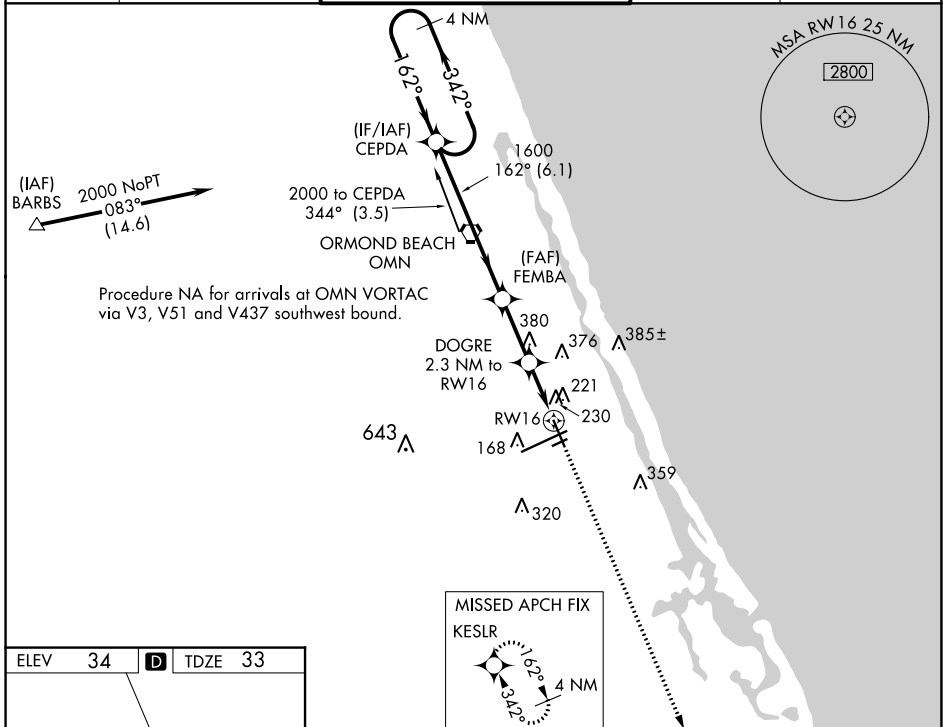
WAAS CH <b>45529</b> W16A	APP CRS <b>162°</b>	Rwy Idg TDZE Apt Elev	<b>5969</b> <b>33</b> <b>34</b>
---------------------------------	------------------------	-----------------------------	---------------------------------------

# RNAV (GPS) RWY 16

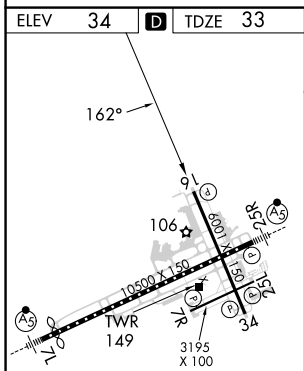
DAYTONA BEACH INTL (DAB)

<p>▼ Baro-VNAV NA below -15° C (5° F). DME/DME RNP-0.3 NA. Helicopter visibility reduction below ¾ SM NA.</p>	MISSED APPROACH: Climb to 1700 direct KESLR and hold.
---	---

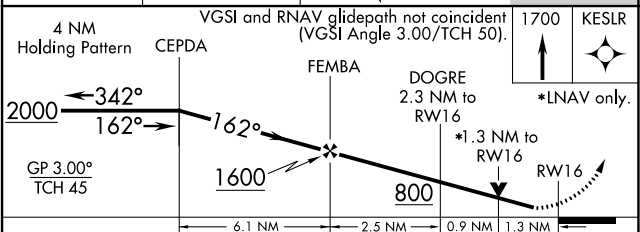
ATIS <b>132.875</b>	DAYTONA APP CON <b>125.8 269.075</b>	DAYTONA TOWER <b>120.7 257.8</b>	GND CON <b>121.9 348.6</b>	CLNC DEL <b>119.3</b>
------------------------	---	-------------------------------------	-------------------------------	--------------------------



Procedure NA for arrivals at OMN VORTAC via V3, V51 and V437 southwest bound.



TDZ/CL Rwy 7L  
HIRL Rwy 7L-25R  
REIL Rwys 7R, 16, 25L and 34  
MIRL Rwys 7R-25L and 16-34



CATEGORY	A	B	C	D
LPV DA	358-1¼		325 (400-1¼)	
LNAV/VNAV DA	479-1½		446 (500-1½)	
LNAV MDA	500-1	467 (500-1)	500-1¼ 467 (500-1¼)	500-1½ 467 (500-1½)
<b>C</b> CIRCLING	540-1½	506 (600-1½)	680-1¾ 646 (700-1¾)	700-2 666 (700-2)

SE-3, 05 SEP 2024 to 03 OCT 2024

SE-3, 05 SEP 2024 to 03 OCT 2024