


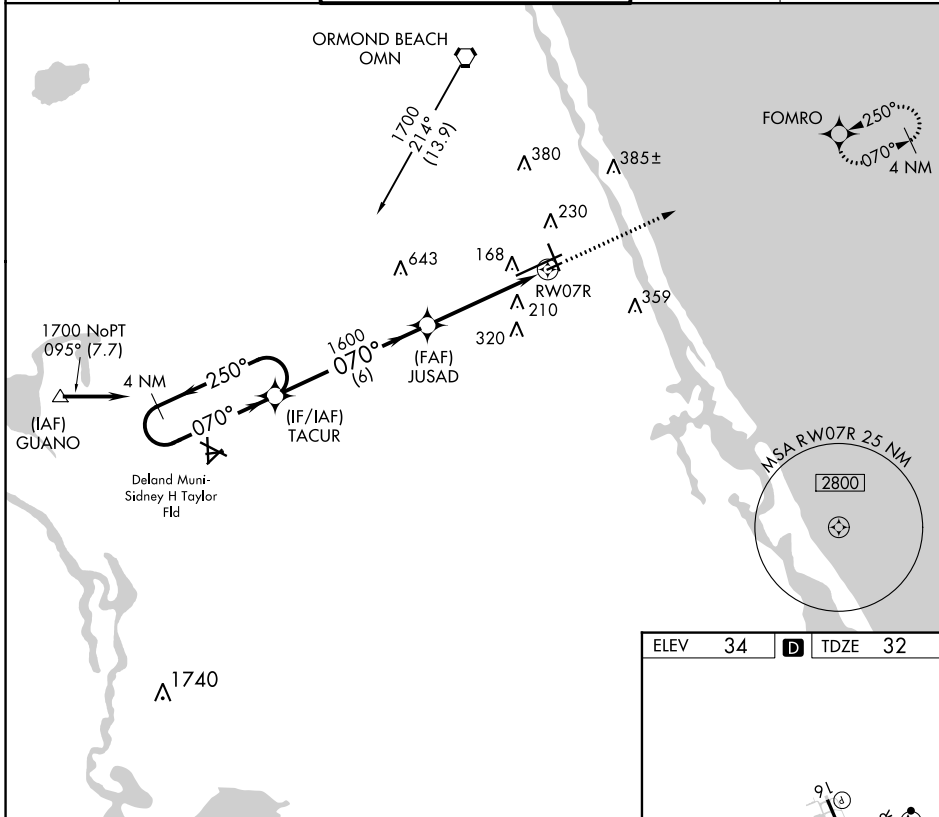
APP CRS	Rwy Idg	3195
070°	TDZE	32
	Apt Elev	34

RNAV (GPS) RWY 7R

DAYTONA BEACH INTL (DAB)

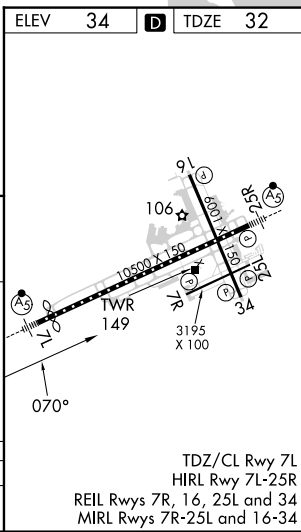
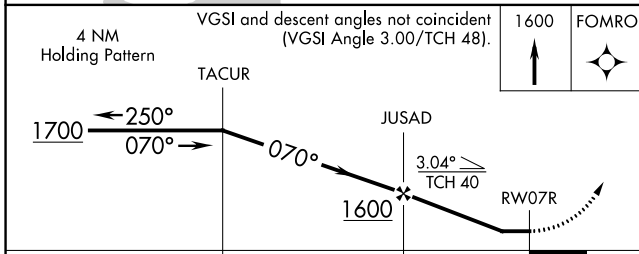
RNP APCH.		MISSED APPROACH: Climb to 1600 direct FOMRO WP and hold.
 Rwy 7R helicopter visibility reduction below 3/4 SM NA.		

ATIS 132.875	DAYTONA APP CON 125.8 269.075	DAYTONA TOWER 120.7 257.8	GND CON 121.9 348.6	CLNC DEL 119.3
------------------------	---	-------------------------------------	-------------------------------	--------------------------



SE-3, 05 SEP 2024 to 03 OCT 2024

SE-3, 05 SEP 2024 to 03 OCT 2024



CATEGORY	A	B	C	D
LNAV MDA	480-1	448 (500-1)	480-1 1/4 448 (500-1 1/4)	NA