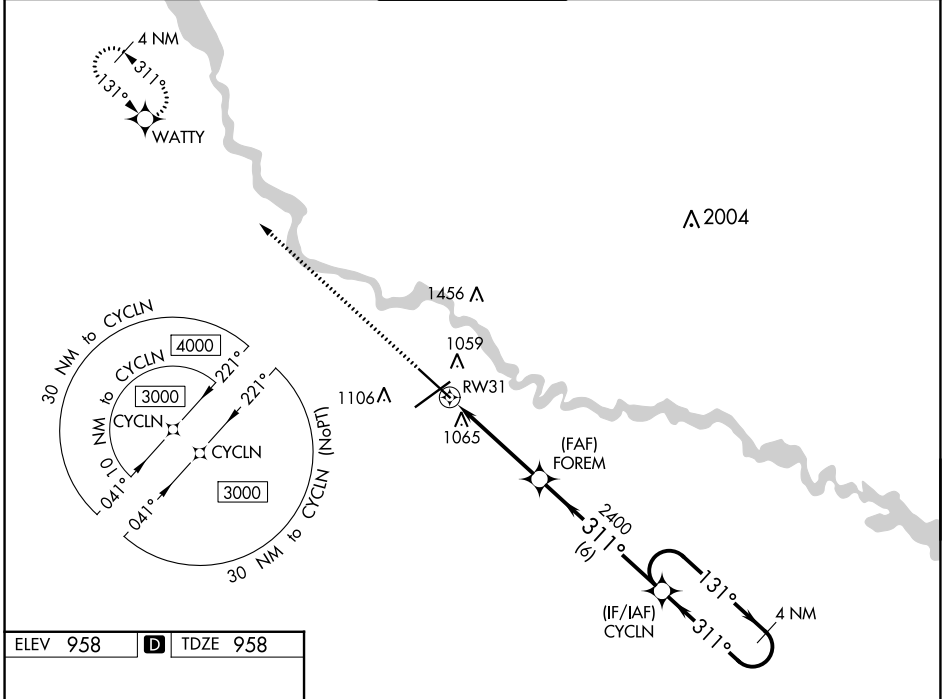


| | | |
|--|------------------------|---|
| WAAS CH 78002 W31A | APP CRS 311° | Rwy Idg 9001 TDZE 958 Apt Elev 958 |
|--|------------------------|---|

RNAV (GPS) RWY 31

DES MOINES INTL (DSM)

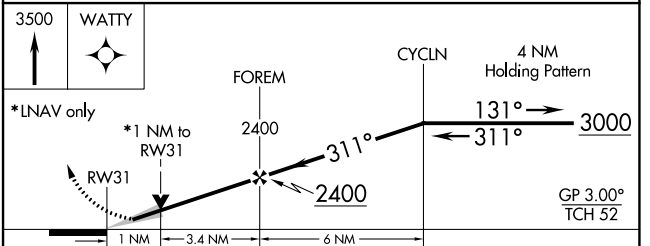
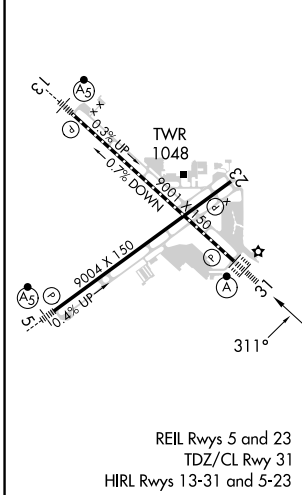
| | | | | |
|--|---|--|---|----------------------------------|
| RNP APCH - GPS. | | ALSF-2 | MISSED APPROACH: Climb to 3500 direct WATTY and hold. | |
| <p>▽ For uncompensated Baro-VNAV systems, LNAV/VNAV NA below -20° or above 54°. For inop ALS, increase LNAV Cats C/D visibility to RVR 5500. Baro-VNAV and VDP NA when using Ankeny Rgnl altimeter setting.</p> | | | | |
| ATIS 119.55 | DES MOINES APP CON 123.9 307.15 | DES MOINES TOWER 118.3 257.8 | GND CON 121.9 348.6 | CLNC DEL 134.15 317.55 |



NC-3, 05 SEP 2024 to 03 OCT 2024

NC-3, 05 SEP 2024 to 03 OCT 2024

| | | |
|----------|----------|----------|
| ELEV 958 | D | TDZE 958 |
|----------|----------|----------|



| CATEGORY | A | B | C | D |
|-------------------|---------|-------------|-------------------------|-------------------------|
| LPV DA | | 1158/18 | 200 (200-½) | |
| LNAV/VNAV DA | | 1354/35 | 396 (400-⅙) | |
| LNAV MDA | 1320/24 | 362 (400-½) | 1320/35 | 362 (400-⅙) |
| C CIRCLING | 1420-1 | 462 (500-1) | 1600-1¾ 642 (700-1¾) | 1760-2½ 802 (900-2½) |