

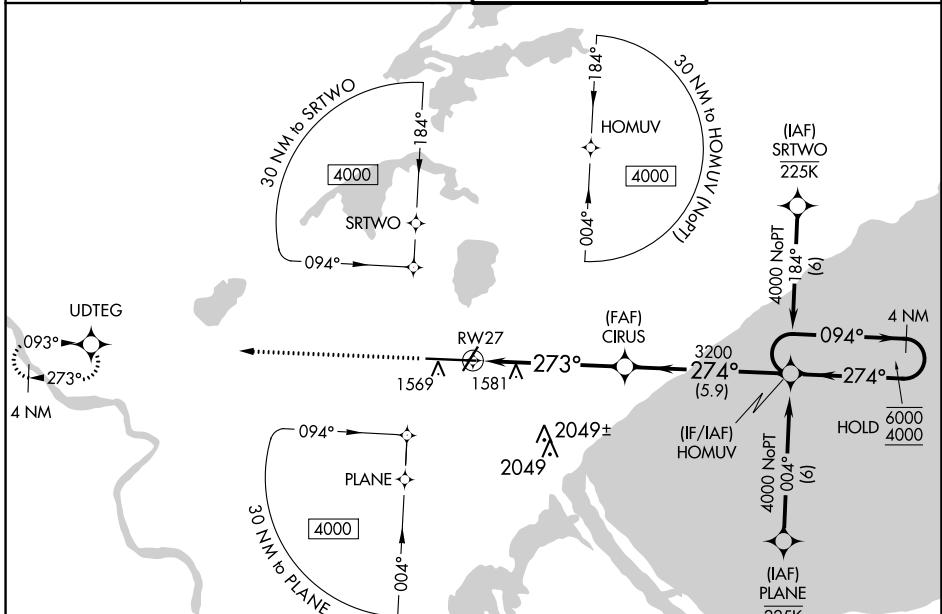
WAAS CH 50502 W27A	APP CRS 273°	Rwy ldg 10062 TDZE 1421 Apt Elev 1428
--	------------------------	--

RNAV (GPS) RWY 27

DULUTH INTL (DLH)

RNP APCH.	MALSR	MISSED APPROACH: Climb to 3300 direct UDEG and hold.
<p>▼ For uncompensated Baro-VNAV systems, LNAV/VNAV NA below -21°C or above 54°C.</p> <p>▲ ASR #RVR 1800 authorized with use of FD or AP or HUD to DA.</p>		

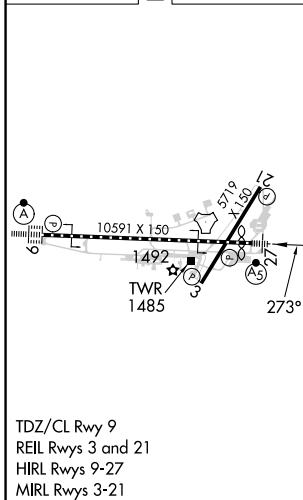
ATIS 124.1 270.1	DULUTH APP CON 125.45 233.7	DULUTH TOWER 118.3 257.8	GND CON 121.9 348.6
----------------------------	---------------------------------------	------------------------------------	-------------------------------



NC-1, 05 SEP 2024 to 03 OCT 2024

NC-1, 05 SEP 2024 to 03 OCT 2024

ELEV 1428	D	TDZE 1421
-----------	----------	-----------



3300 UDEG	VGSi and RNAV glidepath not coincident (VGSi Angle 3.00/TCH 91).	
HOMUV	4 NM Holding Pattern	
* LNAV only	CIRUS 3200	094° → 6000 / ← 274° 4000
	RWY 27	GP 3.00° / TCH 50

CATEGORY	A	B	C	D
LPV DA#		1621/24	200 (200-½)	
LNAV/VNAV DA		1871/45	450 (500-¾)	
LNAV MDA	1860/24	439 (500-½)	1860/40	439 (500-¾)
C CIRCLING	1880-1 452 (500-1)	1900-1 472 (500-1)	1940-1½ 512 (600-1½)	2400-3 972 (1000-3)