

WAAS CH 90502 W09A	APP CRS 093°	Rwy ldg 10062 TDZE 1428 Apt Elev 1428
--	------------------------	--

RNAV (GPS) RWY 9

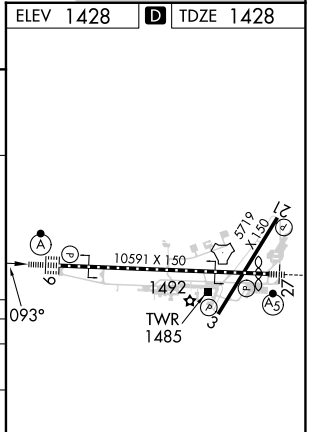
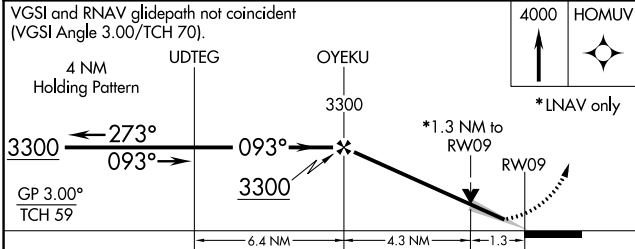
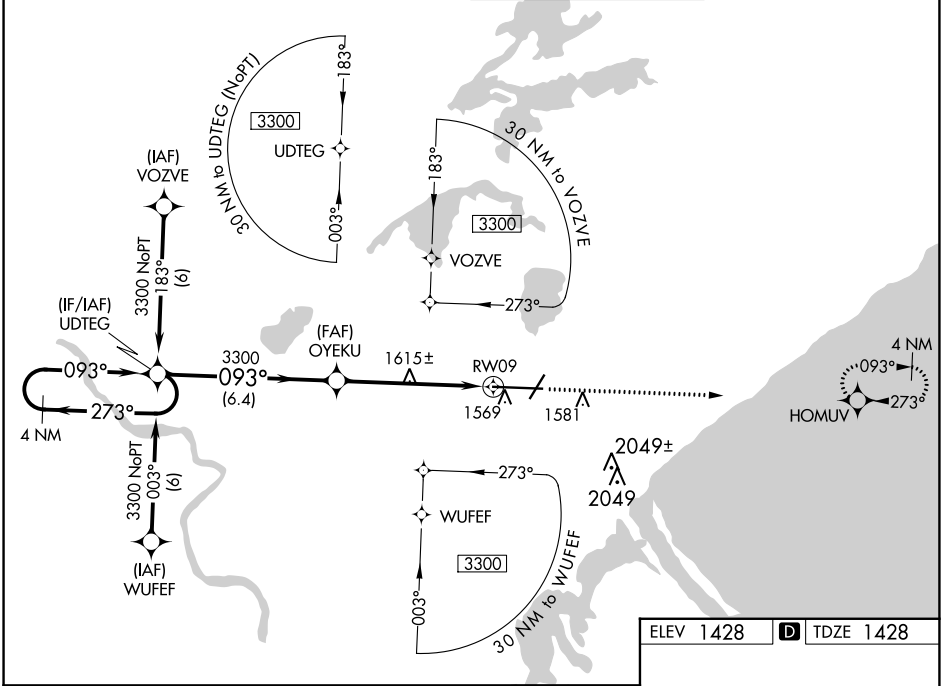
DULUTH INTL (DLH)

ASR For uncompensated Baro-VNAV systems, LNAV/VNAV NA below -17°C (2°F) or above 46°C (115°F). DME/DME RNP-0.3 NA. Circling NA for Cat E southeast of Rwys 3/27. For inop ALS, increase LPV Cat E visibility to ¾ SM, LNAV/VNAV all Cats visibility to 1½ SM and LNAV Cat E visibility to 1½ SM.

ALS-F-2

MISSED APPROACH: Climb to 4000 direct HOMUV and hold.

ATIS 124.1 270.1	DULUTH APP CON 125.45 233.7	DULUTH TOWER 118.3 257.8	GND CON 121.9 348.6
----------------------------	---------------------------------------	------------------------------------	-------------------------------



CATEGORY	A	B	C	D	E
LPV DA		1628/18	200 (200-½)		
LNAV/VNAV DA		1860/50	432 (500-1)		
LNAV MDA	1880/24	452 (500-½)	1880/40 452 (500-¾)	1880/50	452 (500-1)
CIRCLING	1880-1 452 (500-1)	1900-1 472 (500-1)	1940-1½ 512 (600-1½)	2400-3	972 (1000-3)

TDZ/CL Rwy 9
REIL Rwys 3 and 21
HIRL Rwys 9-27
MIRL Rwys 3-21

NC-1, 05 SEP 2024 to 03 OCT 2024

NC-1, 05 SEP 2024 to 03 OCT 2024