

LOC/DME I-EUG <b>110.1</b> Chan 38	APP CRS <b>164°</b>	Rwy Idg <b>8009</b> TDZE <b>364</b> Apt Elev <b>374</b>
--	------------------------	---

# ILS or LOC RWY 16R

MAHLON SWEET FLD (EUG)

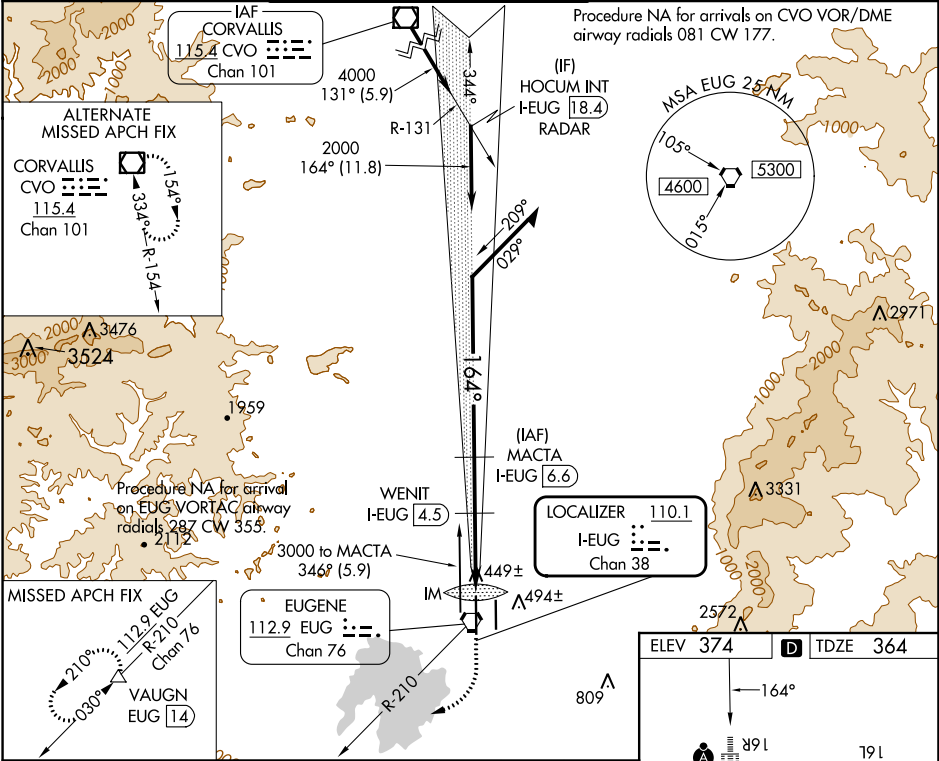
DME required.

**Simultaneous approach authorized.**



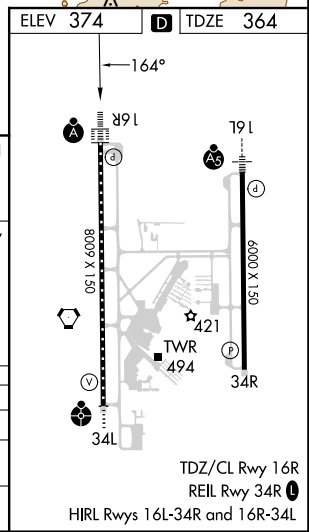
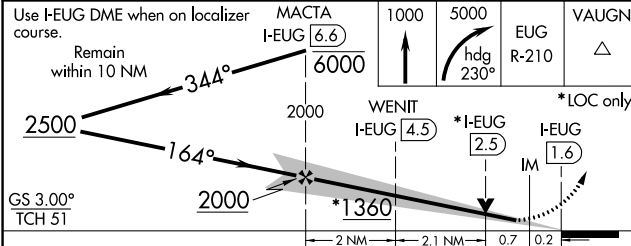
**MISSED APPROACH:** Climb to 1000 then climbing right turn to 5000 on heading 230° and on EUG VORTAC R-210 to VAUGN/EUG 14 DME and hold, continue climb-in-hold to 5000.

ATIS <b>125.225</b>	CASCADE APP CON ★ <b>119.6 348.7</b>	EUGENE TOWER ★ <b>118.9</b> (CTAF) <b>371.9</b> (Rwy 16R/34L) <b>124.15 371.9</b> (Rwy 16L/34R)	GND CON <b>121.7 269.5</b>	CLNC DEL <b>121.7 269.5</b>	UNICOM <b>122.95</b>
------------------------	---	---	-------------------------------	--------------------------------	-------------------------



NW-1, 05 SEP 2024 to 03 OCT 2024

NW-1, 05 SEP 2024 to 03 OCT 2024



CATEGORY	A	B	C	D
S-ILS 16R	564/18 200 (200-½)			
S-LOC 16R	700/24	336 (400-½)	700/26	336 (400-½)
CIRCLING	820-1 446 (500-1)	840-1 466 (500-1)	1000-1¼ 626 (700-1¼)	1140-2½ 766 (800-2½)