

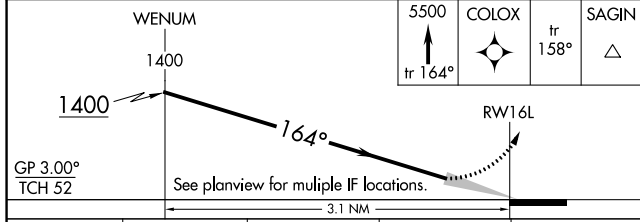
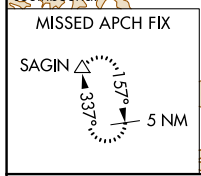
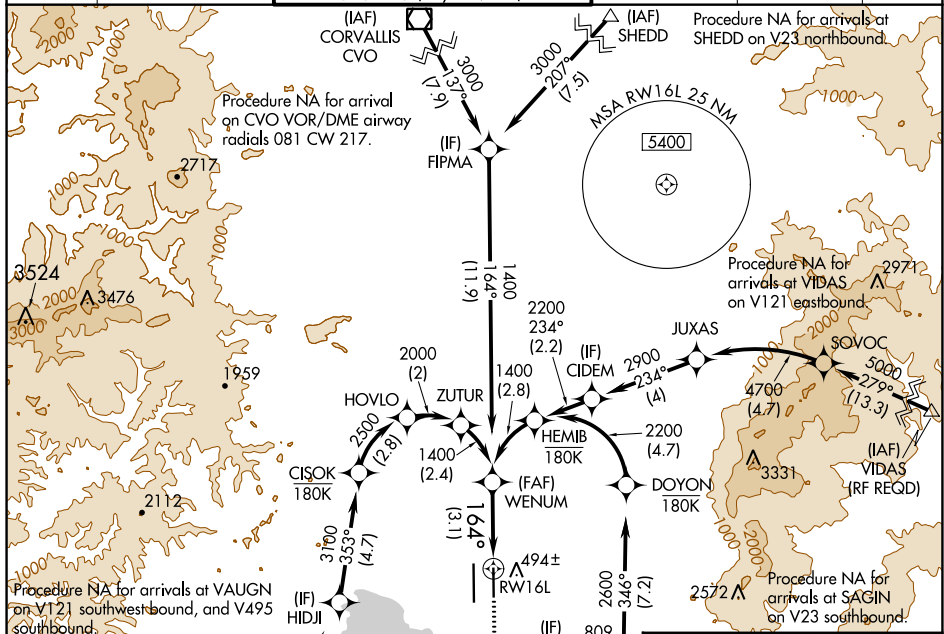
APP CRS	Rwy Idg	6000
164°	TDZE	369
	Apt Elev	374

RNAV (RNP) Z RWY 16L

MAHLON SWEET FLD (EUG)

RNP AR APCH.	MALSR	MISSED APPROACH: Climb to 5500 on track 164° to COLOX and on track 158° to SAGIN and hold, continue climb-in-hold to 5500.
<p>▼ For uncompensated Baro-VNAV systems, procedure NA below -9°C or above 54°C. Simultaneous approach authorized. For inop ALS, increase RNP 0.30 all Cats visibility to 1 SM.</p>		

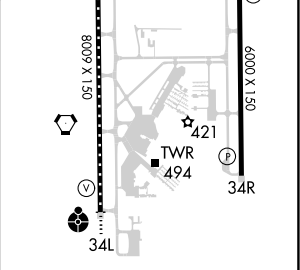
ATIS	CASCADE APP CON*	EUGENE TOWER*	GND CON	CLNC DEL	UNICOM
125.225	119.6 348.7	118.9 (CTAF) 0 371.9 (Rwy 16R/34L) 124.15 371.9 (Rwy 16L/34R)	121.7 269.5	121.7 269.5	122.95



GP 3.00°				
TCH 52				
CATEGORY	A	B	C	D
RNP 0.10 DA		699-½	330 (400-½)	
RNP 0.30 DA		749-⅝	380 (400-⅝)	

AUTHORIZATION REQUIRED

ELEV 374	TDZE 369
----------	----------



TDZ/CL Rwy 16R
REIL Rwy 34R
HIRL Rws 16L-34R and Rwy 16R-34L

NW-1, 05 SEP 2024 to 03 OCT 2024

NW-1, 05 SEP 2024 to 03 OCT 2024