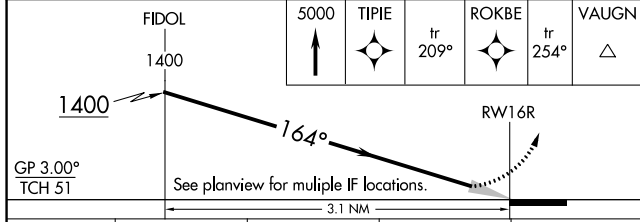
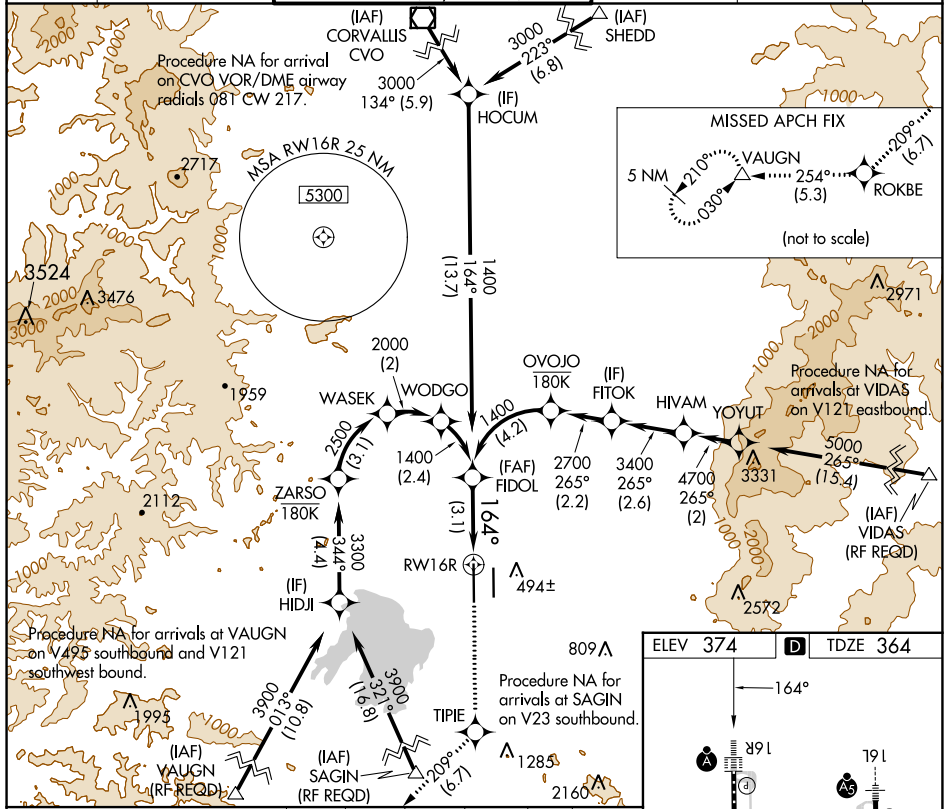


APP CRS	Rwy Idg	<b>8009</b>
<b>164°</b>	TDZE	<b>364</b>
	Apt Elev	<b>374</b>

# RNAV (RNP) Z RWY 16R

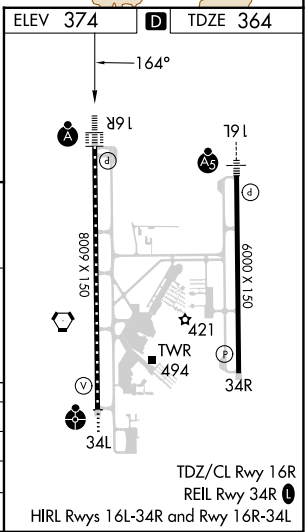
MAHLON SWEET FLD (EUG)

RNP AR APCH.		EUGENE TOWER ★		GND CON		CLNC DEL		UNICOM	
<p>▼ For uncompensated Baro-VNAV systems, procedure NA below -9°C or above 54°C. Simultaneous approach authorized. For inop ALS, increase RNP 0.17 all Cats visibility to RVR 4000 and RNP 0.30 all Cats visibility to RVR 5500.</p>		<p><b>118.9</b> (CTAF) <b>0 371.9</b> (Rwy 16R/34L) <b>124.15 371.9</b> (Rwy 16L/34R)</p>		<p><b>121.7 269.5</b></p>		<p><b>121.7 269.5</b></p>		<p><b>122.95</b></p>	
<p>ALSF-2</p>		<p>MISSED APPROACH: Climb to 5000 direct TIPE, and on track 209° to ROKBE, and track 254° to VAUGN and hold, continue climb-in-hold to 5000.</p>							



CATEGORY	A	B	C	D
RNP 0.17 DA		614/24	250 (300-½)	
RNP 0.30 DA		711/30	347 (400-¾)	

**AUTHORIZATION REQUIRED**



TDZ/CL Rwy 16R  
REIL Rwy 34R  
HIRL Rwy 16L-34R and Rwy 16R-34L

NW-1, 05 SEP 2024 to 03 OCT 2024

NW-1, 05 SEP 2024 to 03 OCT 2024