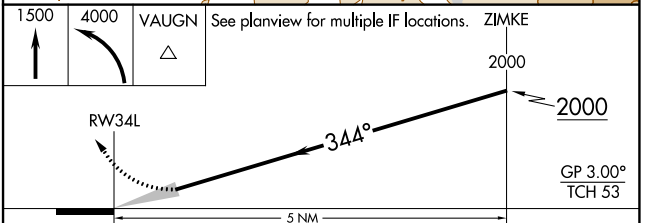
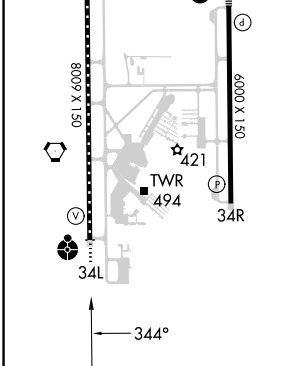
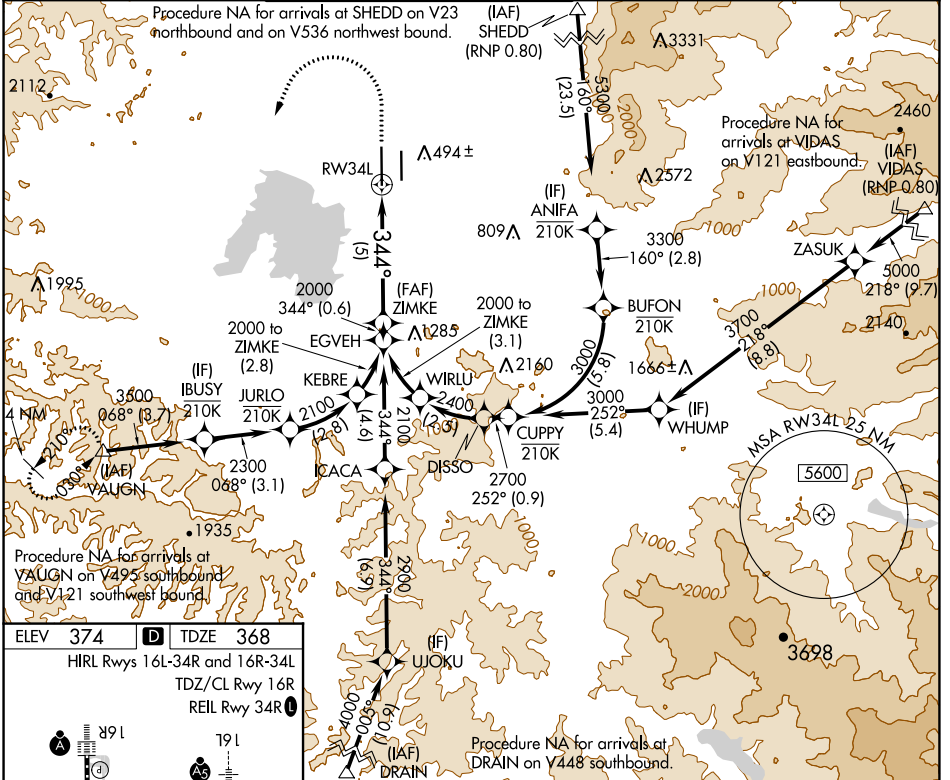


|                        |                             |   |
|------------------------|-----------------------------|---|
| APP CRS<br><b>344°</b> | Rwy Idg<br>TDZE<br>Apt Elev | <b>8009</b><br><b>368</b><br><b>374</b> |
|------------------------|-----------------------------|---|

# RNAV (RNP) Z RWY 34L

MAHLON SWEET FLD (EUG)

|   |   |  |  |                                |                         |
|---|---|--|--|--------------------------------|-------------------------|
| RNP AR APCH - GPS.  |   | ODALS  | MISSED APPROACH: Climb to 1500, then climbing left turn to 4000 direct VAUGN and hold. |                                |                         |
| <p>Simultaneous approach authorized. For uncompensated Baro-VNAV systems, procedure NA below -6°C or above 54°C. For inop ALS, increase RNP 0.20 all Cats visibility to RVR 5500; increase RNP 0.30 Cats A, B visibility to RVR 6000.</p> |   |  |  |                                |                         |
| ATIS<br><b>125.225</b>  | CASCADE APP CON ★<br><b>119.6 348.7</b> | EUGENE TOWER ★<br><b>118.9 (CTAF) 0 371.9</b> (Rwy 16R/34L)<br><b>124.15 371.9</b> (Rwy 16L/34R) | GND CON<br><b>121.7 269.5</b>  | CLNC DEL<br><b>121.7 269.5</b> | UNICOM<br><b>122.95</b> |



| CATEGORY    | A | B      | C            | D |
|-------------|---|--------|--------------|---|
| RNP 0.20 DA |   | 720/45 | 352 (400-7%) |   |
| RNP 0.30 DA |   | 761/50 | 393 (400-1)  |   |

**AUTHORIZATION REQUIRED**

NW-1, 05 SEP 2024 to 03 OCT 2024

NW-1, 05 SEP 2024 to 03 OCT 2024