

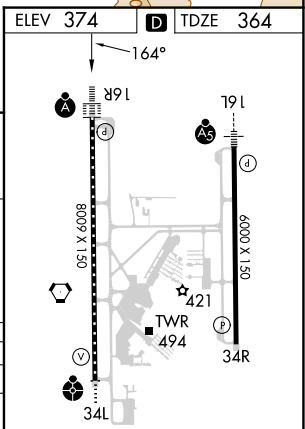
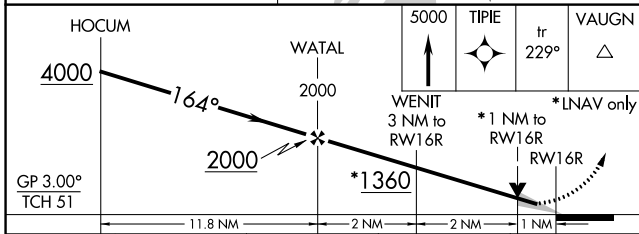
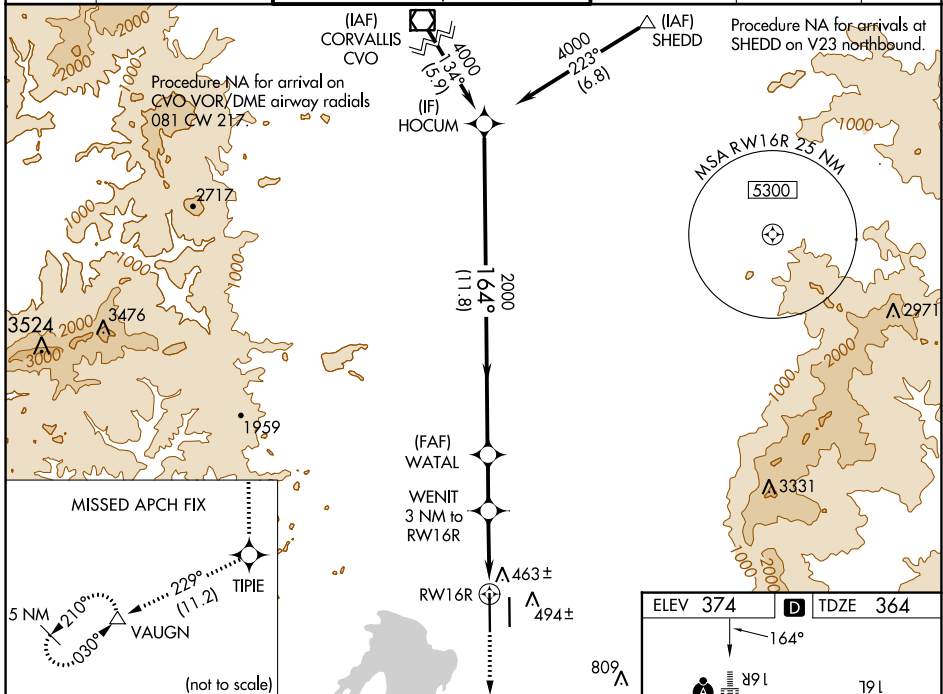
| | | | |
|--|------------------------|---|---|
| WAAS CH 86518 W16B | APP CRS 164° | Rwy Idg TDZE 364 Apt Elev 374 | 8009 364 374 |
|--|------------------------|---|---|

RNAV (GPS) Y RWY 16R

MAHLON SWEET FLD (EUG)

| | | |
|---|------------|--|
| RNP APCH. | ALSF-2 | MISSED APPROACH: Climb to 5000 direct TIPIE and on track 229° to VAUGN and hold, continue climb-in-hold to 5000. |
| <p>⚠ Simultaneous approach authorized. LNAV procedure NA during simultaneous operations. Use of FD or AP providing RNAV track guidance required during simultaneous operations. For uncompensated Baro-VNAV systems, LNAV/VNAV NA below -10°C or above 54°C. For inop ALS, increase LNAV/VNAV all Cats visibility to RVR 4500, increase LNAV Cat C/D visibility to RVR 5500.</p> | | |

| | | | | | |
|------------------------|---|---|-------------------------------|--------------------------------|-------------------------|
| ATIS 125.225 | CASCADE APP CON ★ 119.6 348.7 | EUGENE TOWER ★ 118.9 (CTAF) 0 371.9 (Rwy 16R/34L) 124.15 371.9 (Rwy 16L/34R) | GND CON 121.7 269.5 | CLNC DEL 121.7 269.5 | UNICOM 122.95 |
|------------------------|---|---|-------------------------------|--------------------------------|-------------------------|



| CATEGORY | A | B | C | D |
|-------------------|----------------------|----------------------|-------------------------|-------------------------|
| LPV DA | | 564/18 | 200 (200-½) | |
| LNAV/VNAV DA | | 628/24 | 264 (300-½) | |
| LNAV MDA | 720/24 | 356 (400-½) | 720/30 | 356 (400-¾) |
| C CIRCLING | 820-1 446 (500-1) | 840-1 466 (500-1) | 1000-1¾ 626 (700-1¾) | 1140-2½ 766 (800-2½) |

TDZ/CL Rwy 16R
REIL Rwy 34R
HIRL Rwy 16L-34R and 16R-34L

NW-1, 05 SEP 2024 to 03 OCT 2024

NW-1, 05 SEP 2024 to 03 OCT 2024