

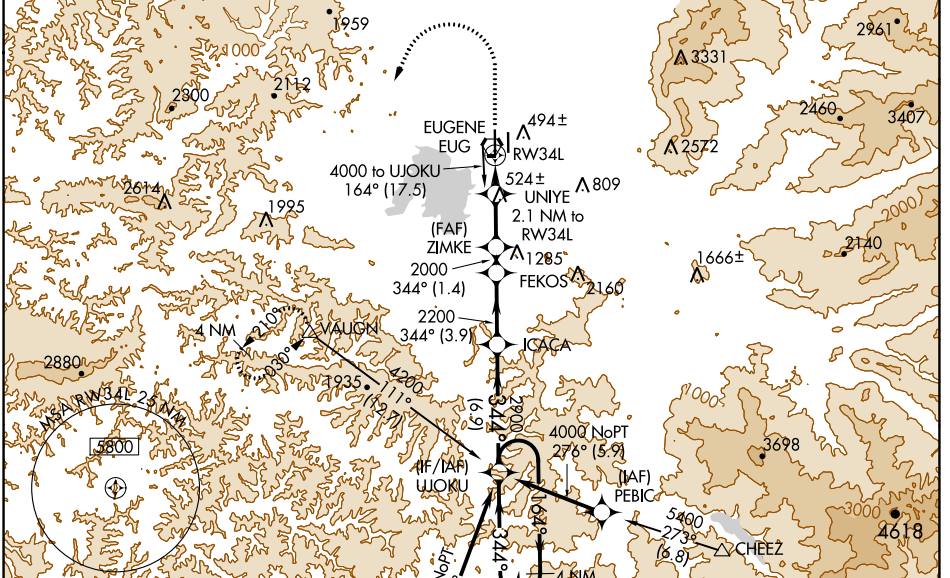
WAAS CH 45600 W 34A	APP CRS 344°	Rwy Idg TDZE Apt Elev	8009 368 374
---	------------------------	-----------------------------	---

RNAV (GPS) Y RWY 34L

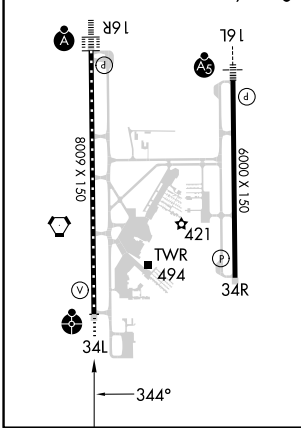
MAHLON SWEET FLD (EUG)

RNP APCH.		EUGENE TOWER *		GND CON		CLNC DEL		UNICOM	
<p>Simultaneous approach authorized. LNAV procedure NA during simultaneous operations. Use of FD or AP providing RNAV track guidance required during simultaneous operations. For uncompensated Baro-VNAV systems, LNAV/VNAV NA below -10°C or above 54°C. For inop ALS increase LNAV/VNAV visibility Cats A-B to RVR 4500. Inop table does not apply to LPV minimums.</p>		<p>118.9 (CTAF) 0 371.9 (Rwy 16R/34L) 124.15 371.9 (Rwy 16L/34R)</p>		<p>121.7 269.5</p>		<p>121.7 269.5</p>		<p>122.95</p>	

ATIS 125.225	CASCADE APP CON * 119.6 348.7	EUGENE TOWER * 118.9 (CTAF) 0 371.9 (Rwy 16R/34L) 124.15 371.9 (Rwy 16L/34R)	GND CON 121.7 269.5	CLNC DEL 121.7 269.5	UNICOM 122.95
------------------------	---	---	-------------------------------	--------------------------------	-------------------------



ELEV 374	D	TDZE 368
HIRL Rwy 16L-34R and 16R-34L		
TDZ/CL Rwy 16R		
REIL Rwy 34R		



1500	4000	VAUGHN	UJOKU 4 NM Holding Pattern			
*LNAV only		UNIYE 2.1 NM to RW34L	ZIMKE	FEKOS	ICACA	UJOKU
*1.1 NM to RW34L		2000	2200	2900	2900	6000
1080*		2000	GP 3.00° TCH 53			
1.1 NM	1 NM	2.9 NM	1.4 NM	3.9 NM	6.9 NM	
CATEGORY	A	B	C	D		
LPV DA	568/40		200 (200-3/4)			
LNAV/VNAV DA	657/40		289 (300-3/4)			
LNAV MDA	760/40		392 (400-3/4)		760/50 392 (400-1)	
CIRCLING	820-1 446 (500-1)		840-1 466 (500-1)		1000-1 3/4 626 (700-1 3/4)	
	1140-2 1/2 766 (800-2 1/2)					

NW-1, 05 SEP 2024 to 03 OCT 2024

NW-1, 05 SEP 2024 to 03 OCT 2024