

APP CRS	Rwy Idg	<b>6000</b>
<b>010°</b>	TDZE	<b>134</b>
	Apt Elev	<b>147</b>

# RNAV (GPS) RWY 1

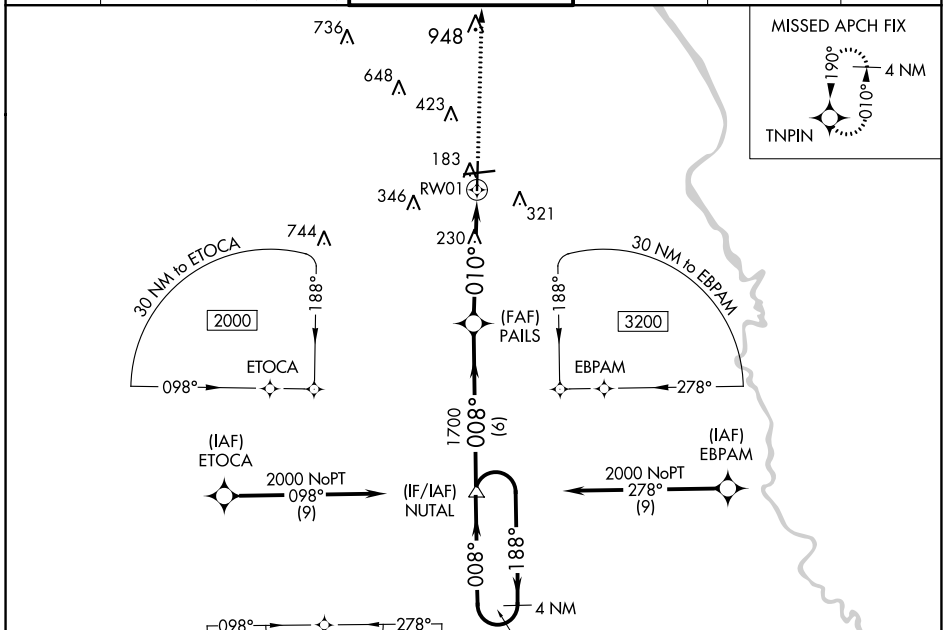
FLORENCE RGNL (FLO)

RNP APCH - GPS.

**▼** Rwy 1 helicopter visibility reduction below 1 SM NA. Straight-in Rwy 1 NA at night,  
**▲** Circling Rwy 1, 19 NA at night.

MISSED APPROACH: Climb to 2000 direct TNPIN and hold.

ATIS <b>123.625</b>	FLORENCE APP CON* <b>118.6 341.7</b> (256°-074°) <b>135.25 316.15</b> (075°-255°)	FLORENCE TOWER* <b>125.1</b> (CTAF) <b>353.85</b>	GND CON <b>121.9 353.85</b>	CLNC DEL <b>121.9 353.85</b>	UNICOM <b>122.95</b>
------------------------	-----------------------------------------------------------------------------------------	------------------------------------------------------	--------------------------------	---------------------------------	-------------------------



SE-2, 05 SEP 2024 to 03 OCT 2024

SE-2, 05 SEP 2024 to 03 OCT 2024

4 NM Holding Pattern		NUTAL	Visual Segment - Obstacles.		2000	TNPIN
6000	← 188°					
2000	→ 008°					
			PAILS			
			1700			
						RWY 1
			6 NM	4.8 NM		
CATEGORY	A	B	C	D		
LNAV MDA	480-1 346 (400-1)					
CIRCLING	640-1 493 (500-1)	660-1 513 (600-1)	900-2¼ 753 (800-2¼)	900-2½ 753 (800-2½)		

