

# ILS or LOC RWY 6

MC GUIRE FLD,

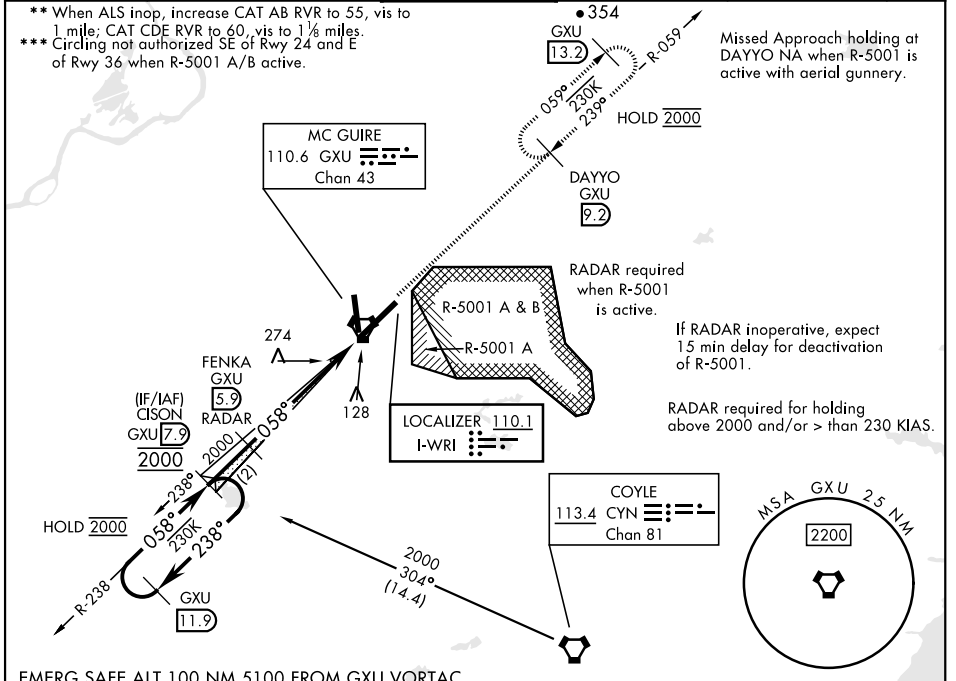
(JOINT BASE MC GUIRE DIX LAKEHURST) (KWRI)

LOC I-WRI <b>110.1</b>	APCH CRS <b>058°</b>	Rwy Idg <b>10,014</b> TDZE <b>131</b> Arprt Elev <b>141</b>
---------------------------	-------------------------	---

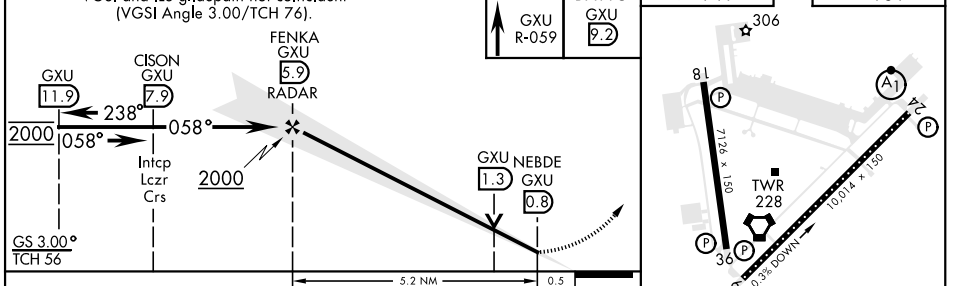
AL-150 [USAF]

RADAR or DME required to identify the FAF.		ALSF-2 	MISSED APPROACH: Climb to 2000 via GXU R-059 to DAYYO and hold. Alternate Missed Approach Instruction: Climb to 2000 via GXU R-059 to DAYYO, expect further clearance from ATC.
<p>▼ * When TDZL/CL inop, increase RVR to 24; RVR 18 still authorized with use of FD or AP or HUD to DA. When ALS inop, increase RVR to 40, vis to ¼ mile.</p>			

ATIS <b>110.6 270.1</b>	MC GUIRE APP CON/DEP CON <b>126.475 363.8</b>	MC GUIRE TOWER <b>118.65 255.6</b>	GND CON <b>121.8 275.8</b>	CLNC DEL <b>135.2 335.8</b>	PAR
----------------------------	--	---------------------------------------	-------------------------------	--------------------------------	-----



EMERG SAFE ALT 100 NM 5100 FROM GXU VORTAC



CATEGORY	A	B	C	D	E
S-ILS 6 *	331/18		200	(200-½)	
S-LOC 6 **	540/24	409 (400-½)	540/40	409	(400-¾)
CIRCLING ***	680-1	539 (600-1)	700-1½ 559 (600-1½)	700-2 559 (600-2)	1200-3 1059 (1100-3)

FAF to MAP 5.2 NM					
Knots	60	90	120	150	180
Min:Sec	5:12	3:28	2:36	2:05	1:44

WRIGHTSTOWN, NEW JERSEY 40°01'N-74°36'W MC GUIRE FLD,  
 Amt 5 18MAY23 (JOINT BASE MC GUIRE DIX LAKEHURST) (KWRI)

# ILS or LOC RWY 6

NE-2, 05 SEP 2024 to 03 OCT 2024

NE-2, 05 SEP 2024 to 03 OCT 2024