

WRIGHTSTOWN, NEW JERSEY

# RNAV (GPS) RWY 36

APCH CRS	Rwy Idg	7126
005°	TDZE	129
	Arprt Elev	141

AL-150 (USAF)  
MC GUIRE FIELD (JOINT BASE MC GUIRE DIX LAKEHURST) (KWRI)

**V** \* Circling NA SE of Rwy 24 and E of Rwy 36 when R-5001 A/B Active. MISSED APPROACH: Climb to 2000 direct DUOVR, then turn right direct FATBU and hold.

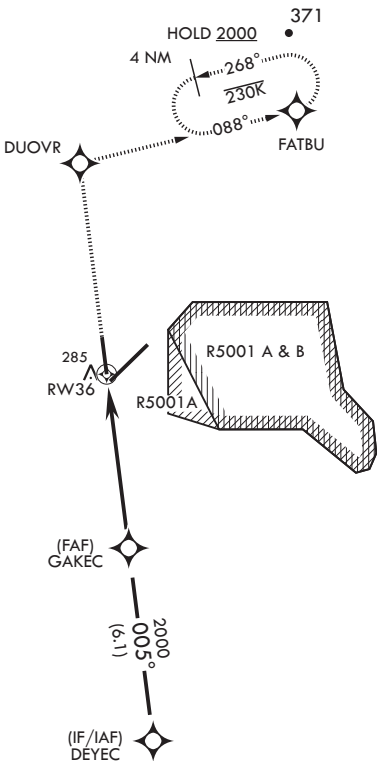
ATIS 110.6 270.1	MC GUIRE APP CON/DEP CON 126.475 363.8	TOWER 118.65 255.6	GND CON 121.8 275.8	CLNC DEL 135.2 335.8	PAR
---------------------	---	-----------------------	------------------------	-------------------------	-----

DME/DME RNP-0.3 NA

RADAR required when R-5001 is active.

RADAR required for holding above 2000 and/or > 230 KIAS.

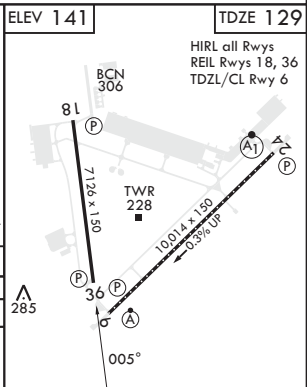
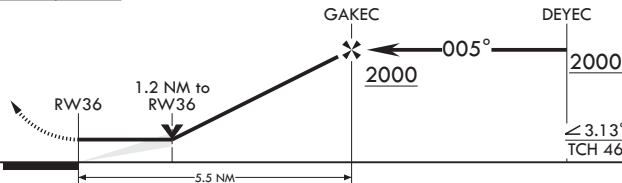
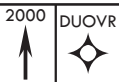
If RADAR inoperative, expect 15 min delay for deactivation of R-5001.



Alternate Missed Approach instructions: Climb to 2000 direct DUOVR, expect further clearance from ATC.

Missed approach holding at FATBU NA when R-5001 is active with aerial gunnery.

EMERG SAFE ALT 100 NM 5100



CATEGORY	A	B	C	D	E
LNVA MDA	560-1 431 (500-1)	560-1¼ 431 (500-1¼)	700-1½ 559 (600-1½)	700-2 559 (600-2)	1200-3 1059 (1100-3)
<b>C</b> CIRCLING*	680-1 539 (600-1)				

WRIGHTSTOWN, NEW JERSEY

MC GUIRE FIELD (JOINT BASE MC GUIRE DIX LAKEHURST) (KWRI)

Amdt 6 18MAY23

40°01'N - 74°36'W

# RNAV (GPS) RWY 36

NE-2, 05 SEP 2024 to 03 OCT 2024

NE-2, 05 SEP 2024 to 03 OCT 2024