

WRIGHTSTOWN, NEW JERSEY

VOR/DME or TACAN RWY 6

MC GUIRE FLD,

AL-150 [USAF]

(JOINT BASE MC GUIRE DIX LAKEHURST) (KWRI)

VORTAC GXU 110.6 Chan 43	APCH CRS 044°	Rwy Idg 10,014 TDZE 131 Arprt Elev 141
--	-------------------------	---

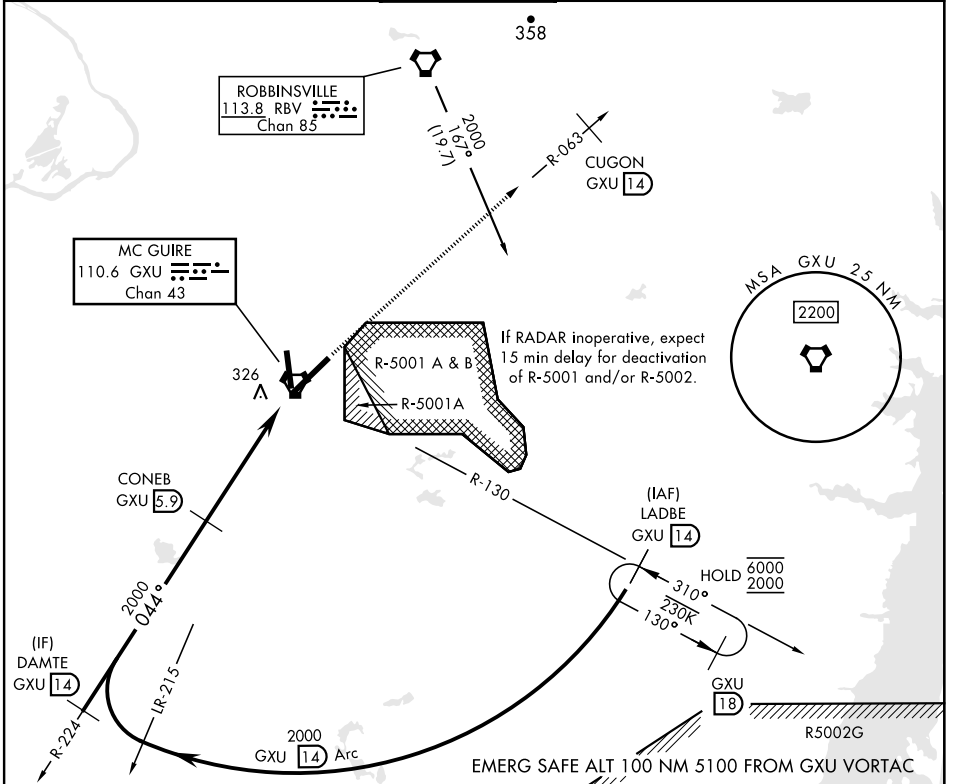
RADAR required when R-5001 and/or R-5002 is active.



MISSED APPROACH: Climb to 2000 via GXU VORTAC R-063 to CUGON, expect further clearance from ATC.

▼ * When ALS inop, increase CAT AB RVR to 55 and vis to 1 mile, CAT CDE vis to 1 3/8 miles.
 ** Circling NA SE of RWY 24 and E of RWY 36 when R-5001 A/B active.

ATIS 110.6 270.1	MC GUIRE APP CON/DEP CON 126.475 363.8	MC GUIRE TOWER 118.65 255.6	GND CON 121.8 275.8	CLNC DEL 135.2 335.8	PAR
----------------------------	--	---------------------------------------	-------------------------------	--------------------------------	-----



CATEGORY	A		B		C		D		E	
	640/24		509 (500-1/2)		640/55		509 (500-1)			
S-6 *	640/24		509 (500-1/2)		640/55		509 (500-1)			
CIRCLING **	680-1		539 (600-1)		700-1 1/2 559 (600-1 1/2)		700-2 559 (600-2)		1200-3 1059 (1100-3)	

LADBE GXU R-130 14	DAMTE GXU R-224 14	CONEB GXU 5.9	GXU R-063 14	GXU BEMGE 1.6	GXU 1
------------------------------	------------------------------	-------------------------	------------------------	-------------------------	-----------------

ELEV	141	TDZE	131
------	-----	------	-----

WRIGHTSTOWN, NEW JERSEY

40°01'N-74°36'W

MC GUIRE FLD,

Amtd 7 18MAY23

(JOINT BASE MC GUIRE DIX LAKEHURST) (KWRI)

VOR/DME or TACAN RWY 6

NE-2, 05 SEP 2024 TO 03 OCT 2024

NE-2, 05 SEP 2024 TO 03 OCT 2024