

# GARLAND FIVE DEPARTURE

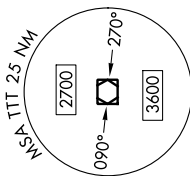
FORT WORTH, TEXAS

SC-2, 05 SEP 2024 to 03 OCT 2024

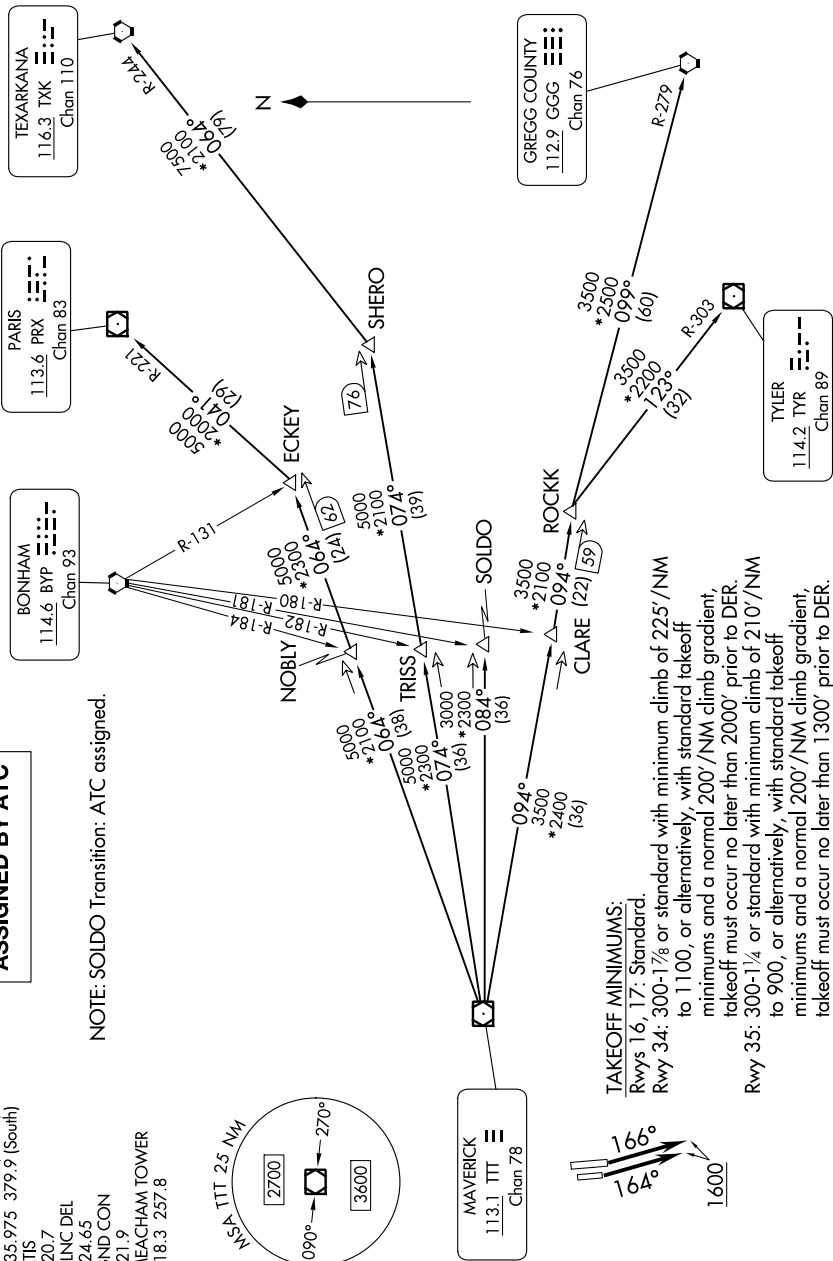
## TOP ALTITUDE: ASSIGNED BY ATC

REGIONAL DEP CON  
118.1 306.95 (North)  
135.975 379.9 (South)  
ATIS  
120.7  
CLNC DEL  
124.65  
GND CON  
121.9  
MEACHAM TOWER  
118.3 257.8

NOTE: SOLDO Transition: ATC assigned.



RADAR and DME required.

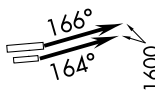


### TAKEOFF MINIMUMS:

Rwys 16, 17: Standard.

Rwy 34: 300-1<sup>7</sup>/<sub>8</sub> or standard with minimum climb of 225'/NM to 1100, or alternatively, with standard takeoff minimums and a normal 200'/NM climb gradient, takeoff must occur no later than 2000' prior to DER.

Rwy 35: 300-1<sup>7</sup>/<sub>8</sub> or standard with minimum climb of 210'/NM to 900, or alternatively, with standard takeoff minimums and a normal 200'/NM climb gradient, takeoff must occur no later than 1300' prior to DER.



NOTE: Chart not to scale.

(CONTINUED ON FOLLOWING PAGE)

# GARLAND FIVE DEPARTURE

FORT WORTH, TEXAS

SC-2, 05 SEP 2024 to 03 OCT 2024