

(BLTWY7.BLTWY) 21280

AL-198 (FAA)

WILLIAM P HOBBY (HOU)

HOUSTON, TEXAS

# BLTWY SEVEN DEPARTURE (RNAV)

D-ATIS 124.6  
 CLNC DEL  
 125.45  
 CPDLC  
 GND CON  
 121.9  
 HOBBY TOWER  
 118.7 256.9  
 HOUSTON DEP CON  
 132.25 285.425

**TOP ALTITUDE:  
16000**

NOTE: RADAR required.  
 NOTE: DME/DME/IRU or GPS required.  
 NOTE: RNAV 1.

### TAKEOFF MINIMUMS

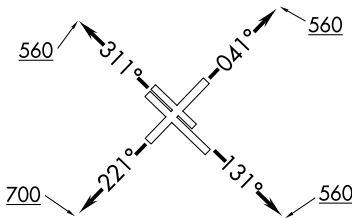
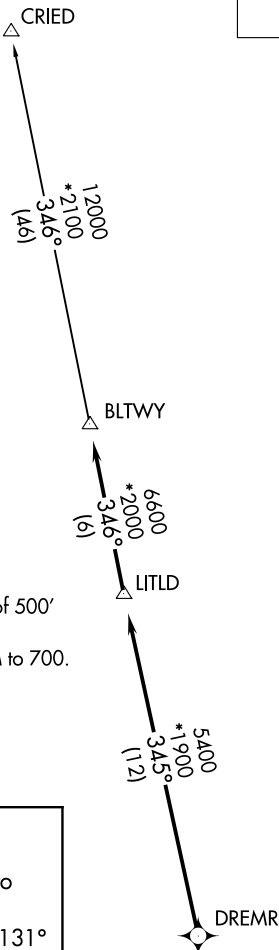
Rwys 4, 13L/R, 31L/R: Standard with minimum climb of 500' per NM to 560.  
 Rwy 22: Standard with minimum climb of 500' per NM to 700.

### DEPARTURE ROUTE DESCRIPTION

TAKEOFF RUNWAY 4: Climb on heading 041° to 560 for RADAR vectors to DREMR, thence . . . .  
TAKEOFF RUNWAYS 13L/R: Climb on heading 131° to 560 for RADAR vectors to DREMR, thence . . . .  
TAKEOFF RUNWAY 22: Climb on heading 221° to 700 for RADAR vectors to DREMR, thence . . . .  
TAKEOFF RUNWAYS 31L/R: Climb on heading 311° to 560 for RADAR vectors to DREMR, thence . . . .

. . . . on track 345° to LITLD, then on track 346° to BLTWY, then on (transition). Maintain 16000 as assigned by ATC. Expect filed altitude 10 minutes after departure.

CRIED TRANSITION (BLTWY7.CRIED)



NOTE: Chart not to scale.

# BLTWY SEVEN DEPARTURE (RNAV)

(BLTWY7.BLTWY) 07OCT21

HOUSTON, TEXAS  
WILLIAM P HOBBY (HOU)

SC-5, 05 SEP 2024 to 03 OCT 2024

SC-5, 05 SEP 2024 to 03 OCT 2024