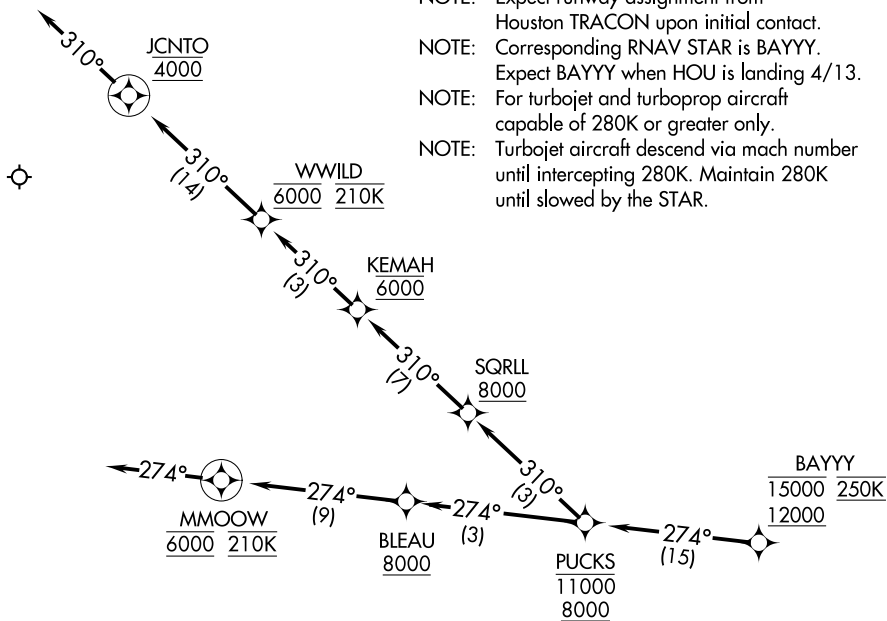


# PUCKS FOUR ARRIVAL (RNAV) Arrival Routes

HOUSTON APP CON  
119.625 226.675  
D-ATIS  
124.6

RNAV 1- DME/DME/IRU or GPS.  
RADAR required.

- NOTE: Expect runway assignment from Houston TRACON upon initial contact.
- NOTE: Corresponding RNAV STAR is BAYYY. Expect BAYYY when HOU is landing 4/13.
- NOTE: For turbojet and turboprop aircraft capable of 280K or greater only.
- NOTE: Turbojet aircraft descend via mach number until intercepting 280K. Maintain 280K until slowed by the STAR.



NOTE: Chart not to scale.

## ARRIVAL ROUTE DESCRIPTION

From BAYYY on track 274° to cross PUCKS between 8000 and 11000.

LANDING RUNWAY 22: From PUCKS on track 310° to cross SQRLL at or above 8000, then on track 310° to cross KEMAH at 6000, then on track 310° to cross WWILD at 6000 and at 210K, then on track 310° to cross JCNTO at 4000, then on track 310°. Expect RADAR vectors to final approach course.

LANDING RUNWAYS 31L/R: From PUCKS on track 274° to cross BLEAU at or above 8000, then on track 274° to cross MMOOW at 6000 and at 210K, then on track 274°. Expect RADAR vectors to final approach course.