

WAAS CH 70310 W13A	APP CRS 131°	Rwy ldg 6568 TDZE 46 Apt Elev 46
--	------------------------	---

RNAV (GPS) RWY 13R

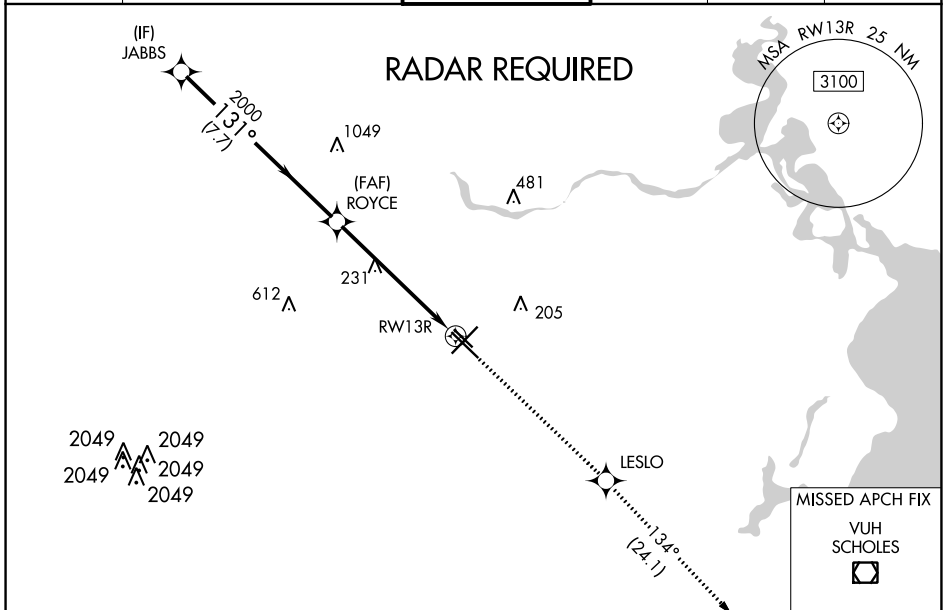
WILLIAM P HOBBY (HOU)

▽ For uncompensated Baro-VNAV systems, LNAV/VNAV NA below -15°C or above 54°C. DME/DME RNP-0.3 NA. For inop ALS, increase LPV all Cats visibility to RVR 5000; increase LNAV/VNAV Cats A/B/C/D visibility to 1½ SM, Cat E to 1½ SM; and increase LNAV Cats A/B visibility to RVR 5500, Cats C/D to 1½ SM, Cat E to 1¾ SM. Rwy 13R helicopter visibility reduction below ¾ SM NA.



MISSED APPROACH: Climb to 2200 direct LESLO and on track 134° to VUH VOR/DME.

D-ATIS 124.6	HOUSTON APP CON 120.05 379.1 EAST 124.35 316.15 WEST	HOBBY TOWER 118.7 256.9	GND CON 121.9	CLNC DEL 125.45	CPDLC
------------------------	--	-----------------------------------	-------------------------	---------------------------	-------

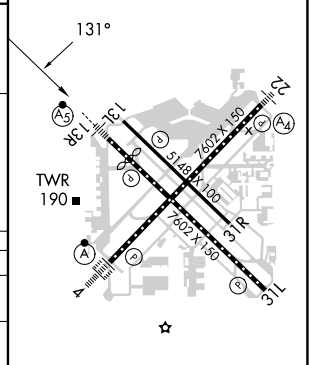


SC-5, 05 SEP 2024 to 03 OCT 2024

SC-5, 05 SEP 2024 to 03 OCT 2024

ELEV 46	D TDZE 46
---------	------------------

JABBS	ROYCE	2200	LESLO	tr 134°	VUH
2000	2000	↑	✧	↖	☐
GP 3.00° TCH 49			* 1.4 NM to RWY 13R		* LNAV only
7.7 NM	4.5 NM		1.4 NM		
CATEGORY	A	B	C	D	E
LPV DA	330/40		284 (300-¾)		
LNAV/VNAV DA	475/50		429 (500-1)		
LNAV MDA	540/40	494 (500-¾)	540/50	494 (500-1)	540/60 494 (500-1¼)
C CIRCLING	540-1	494 (500-1)	740-2¼	694 (700-2¼)	860-3 814 (900-3)



REIL Rwy 31L
MIRL Rwy 13L-31R
HIRL Rws 4-22 and 13R-31L
TDZ/CL Rws 4, 13R and 31L