

WAAS CH <b>53728</b> <b>W31A</b>	APP CRS <b>314°</b>	Rwy Idg TDZE Apt Elev	<b>7003</b> <b>1520</b> <b>1543</b>
--	------------------------	-----------------------------	---

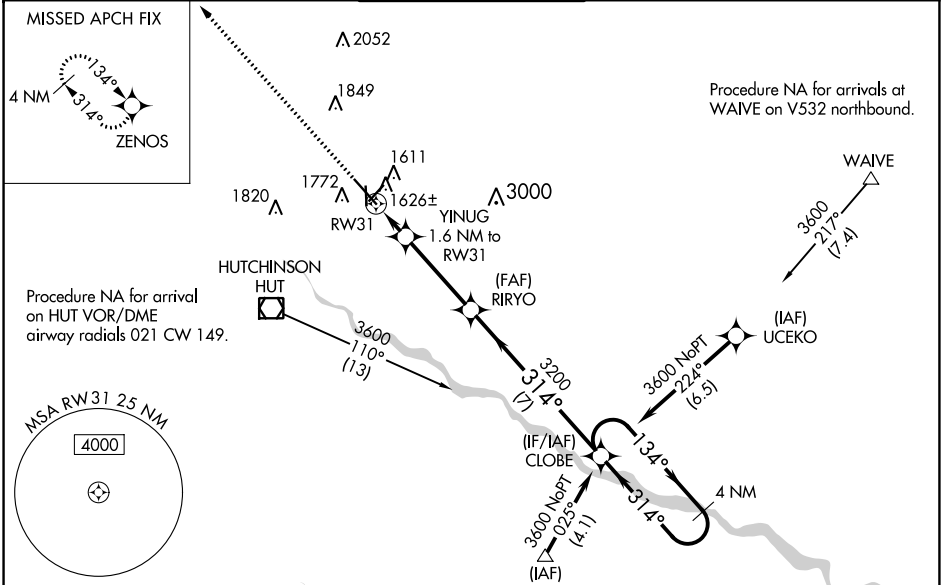
# RNAV (GPS) RWY 31

HUTCHINSON RGNL (HUT)

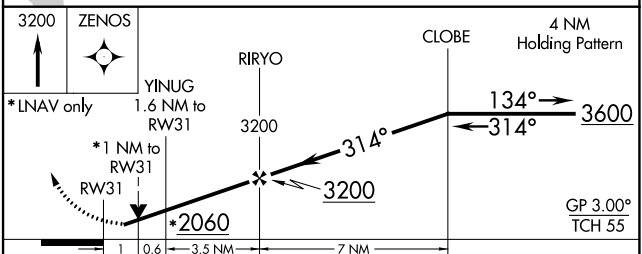
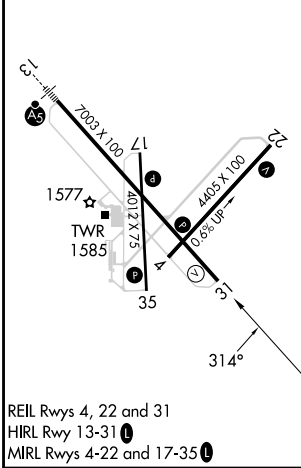
**⚠** Circling to Rwy 22 NA at night. For uncompensated Baro-VNAV systems, LNAV/VNAV NA below -18°C (0°F) or above 54°C (130°F). Rwy 31 helicopter visibility reduction below ¾ SM NA. DME/DME RNP-0.3 NA.

MISSED APPROACH: Climb to 3200 direct ZENOS and hold.

ATIS <b>124.25</b>	WICHITA APP CON <b>125.5 306.2</b>	HUTCHINSON TOWER * <b>118.5 (CTAF) 363.0</b>	GND CON <b>121.9</b>	UNICOM <b>122.95</b>
-----------------------	---------------------------------------	---	-------------------------	-------------------------



ELEV 1543	<b>D</b>	TDZE 1520
-----------	----------	-----------



CATEGORY	A	B	C	D
LPV DA		1770-¾	250 (300-¾)	
LNAV/VNAV DA		1812-⅞	292 (300-⅞)	
LNAV MDA		1880-1	360 (400-1)	
<b>C</b> CIRCLING	2080-1	537 (600-1)	2200-1¾ 657 (700-1¾)	2720-3 1177 (1200-3)

NC-2, 05 SEP 2024 to 03 OCT 2024

NC-2, 05 SEP 2024 to 03 OCT 2024