

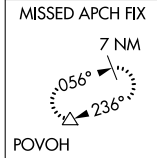
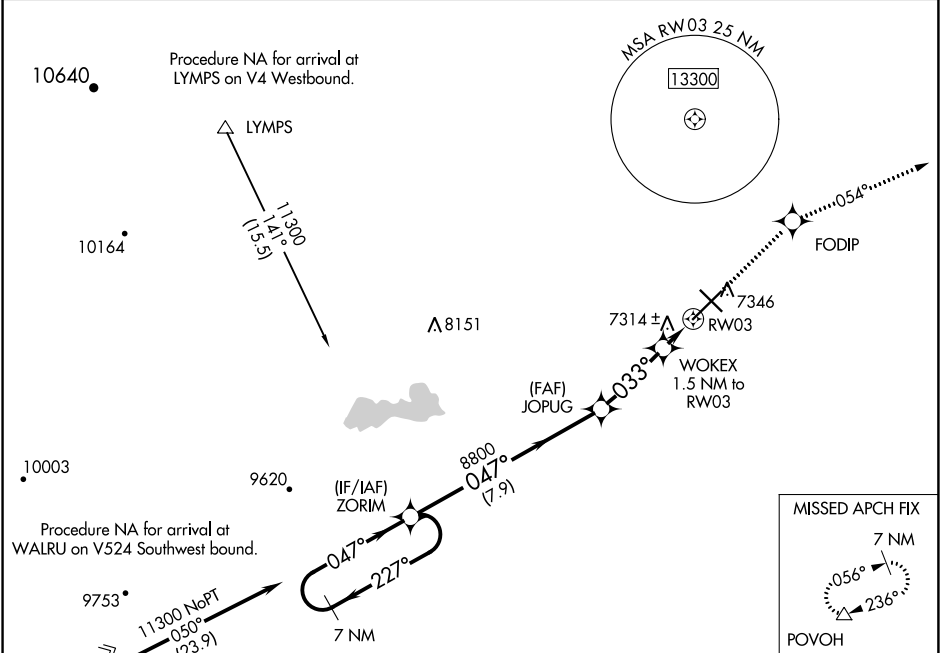
WAAS CH 86325 W03A	APP CRS 033°	Rwy Idg TDZE Apt Elev 8503 7284 7284
--	------------------------	--

RNAV (GPS) RWY 3

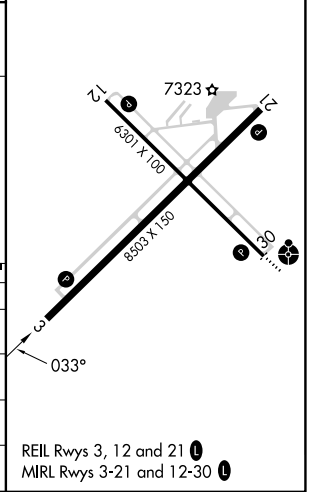
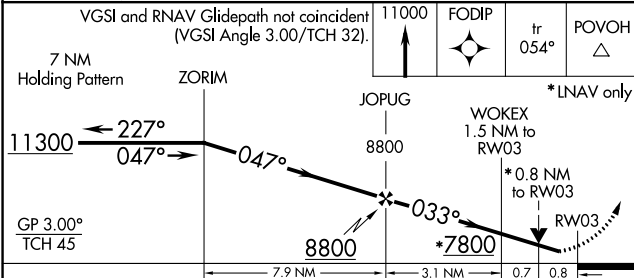
LARAMIE RGNL (L.A.R.)

<p>⚠ DME/DME RNP-0.3 NA. Circling to Rwy 30 NA at night. Baro-VNAV NA. Helicopter visibility reduction below 3/4 SM NA.</p>	<p>MISSED APPROACH: Climb to 11000 direct FODIP and on track 054° to POVOH and hold, continue climb-in-hold to 11000.</p>
--	---

ASOS 135.475	DENVER CENTER 125.9 284.7	UNICOM 123.05 (CTAF) 0
------------------------	-------------------------------------	----------------------------------



ELEV 7284	D TDZE 7284
-----------	--------------------



CATEGORY	A	B	C	D
LPV DA		7534-3/4	250 (300-3/4)	
LNNAV/VNAV DA		7534-3/4	250 (300-3/4)	
LNNAV MDA	7580-1	296 (300-1)	7580-7/8	296 (300-7/8)
CIRCLING	7660-1 376 (400-1)	7760-1 476 (500-1)	7880-1 1/2 596 (600-1 1/2)	7920-2 636 (700-2)

NW-1, 05 SEP 2024 to 03 OCT 2024

NW-1, 05 SEP 2024 to 03 OCT 2024