

LOC/DME I-LRD	APP CRS	Rwy Idg	18R	18L
<b>111.9</b>	<b>178°</b>	TDZE	<b>8743</b>	<b>8236</b>
Chan <b>56</b>		Apt Elev	<b>504</b>	<b>499</b>
			<b>508</b>	<b>508</b>

# ILS or LOC RWY 18R

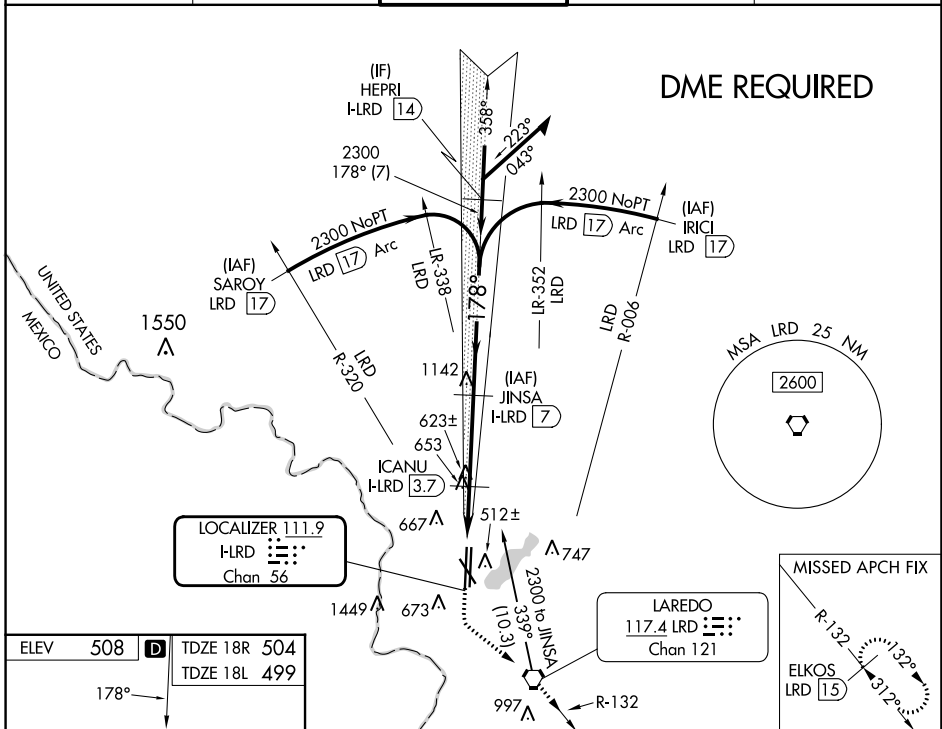
LAREDO INTL (L.R.D)

**⚠** Circling NA west of Rwy 14 and 36L.  
**⚠** DME required.  
 For inop ALS, increase S-ILS 18R Cat E visibility to ¾ SM and increase S-LOC 18R Cat C/D/E visibility to 1½ SM.



**MISSED APPROACH:** Climb to 1100 then climbing left turn to 2500 direct LRD VORTAC and on LRD VORTAC R-132 to ELKOS/LRD 15 DME and hold.

ATIS <b>125.775</b>	HOUSTON CENTER <b>127.8 307.2</b>	LAREDO TOWER ★ <b>120.1(CTAF) 0 257.9</b>	GND CON <b>121.8</b>	UNICOM <b>122.95</b>
------------------------	--------------------------------------	--	-------------------------	-------------------------

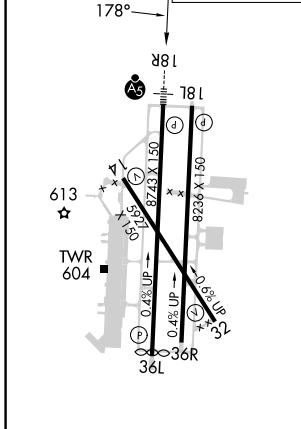


**DME REQUIRED**

SC-3, 05 SEP 2024 to 03 OCT 2024

SC-3, 05 SEP 2024 to 03 OCT 2024

ELEV 508	<b>D</b> TDZE 18R 504
	TDZE 18L 499



MIRL Rwy 14-32  
 HIRL Rwy 18R-36L and 18L-36R

1100 2500 LRD ELKOS LRD 15 VGSI and ILS glidepath not coincident (VGSI Angle 3.00/TCH 50). Remain within 15 NM

Use I-LRD DME when on the localizer course.

\*LOC only

I-LRD 1.5 \*I-LRD 2.7 ICANU I-LRD 3.7

2300 358° 2300 178° 2300 GS 3.00° TCH 57

1.2 NM -1.1 NM -3.3 NM

CATEGORY	A	B	C	D	E
S-ILS 18R	704-½ 200 (200-½)				
S-LOC 18R	920-½	416 (500-½)	920-¾	416 (500-¾)	
SIDESTEP 18L	920-1	421 (500-1)	920-1½	920-2	421 (500-2)
			421 (500-1½)		
<b>C</b> CIRCLING	940-1	980-1	1100-1½	1200-2¼	1200-2½
	432 (500-1)	472 (500-1)	592 (600-1½)	692 (700-2¼)	692 (700-2½)