

LAREDO, TEXAS

AL-226 (FAA)

24137

WAAS CH 65841 W14A	APP CRS 142°	Rwy Idg TDZE 5927 Apt Elev 508
--	------------------------	--

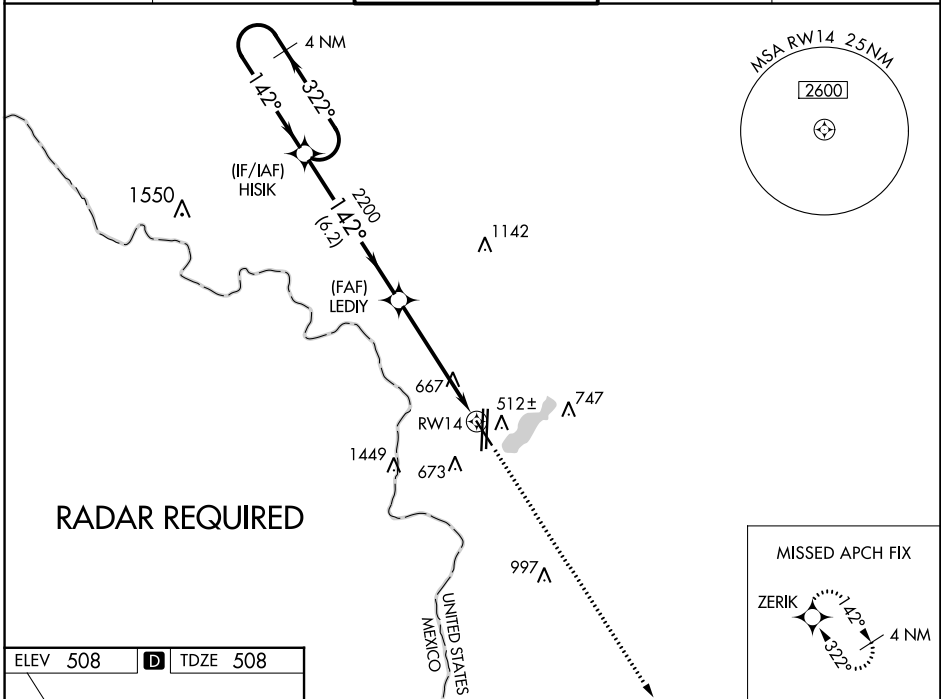
RNAV (GPS) RWY 14

LAREDO INTL (L.R.D)

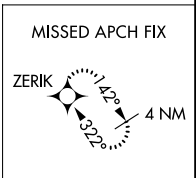
⚠ For uncompensated Baro-VNAV systems, LNAV/VNAV NA below 1°C (34°F) or above 54°C (130°F). Circling NA west of Rwy 14 and 36L.
⚠ DME/DME RNP-0.3 NA.

MISSED APPROACH: Climb to 2500 direct ZERIK and hold.

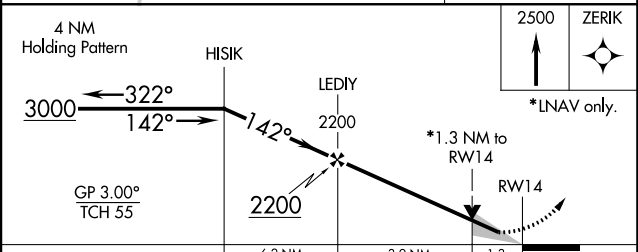
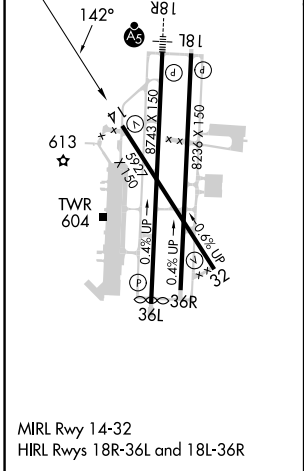
ATIS 125.775	HOUSTON CENTER 127.8 307.2	LAREDO TOWER * 120.1(CTAF) 257.9	GND CON 121.8	UNICOM 122.95
------------------------	--------------------------------------	--	-------------------------	-------------------------



RADAR REQUIRED



ELEV 508	D	TDZE 508
-----------------	----------	-----------------



CATEGORY	A	B	C	D	E
LPV DA	758- ³ / ₄ 250 (300- ³ / ₄)				
LNAV/VNAV DA	810- ⁷ / ₈ 302 (400- ⁷ / ₈)				
LNAV MDA	960-1	452 (500-1)	960-1 ³ / ₈ 452 (500-1 ³ / ₈)		
<input checked="" type="checkbox"/> CIRCLING	960-1 452 (500-1)	980-1 472 (500-1)	1100-1 ¹ / ₂ 592 (600-1 ¹ / ₂)	1200-2 ¹ / ₄ 692 (700-2 ¹ / ₄)	1200-2 ¹ / ₂ 692 (700-2 ¹ / ₂)

LAREDO, TEXAS
Amdt 1 01FEB18

27°33'N-99°28'W

LAREDO INTL (L.R.D)

RNAV (GPS) RWY 14

SC-3, 05 SEP 2024 to 03 OCT 2024

SC-3, 05 SEP 2024 to 03 OCT 2024