

WAAS Ch <b>77899</b> <b>W18B</b>	APP CRS <b>178°</b>	Rwy Idg TDZE Apt Elev	<b>8236</b> <b>499</b> <b>508</b>
--	------------------------	-----------------------------	---

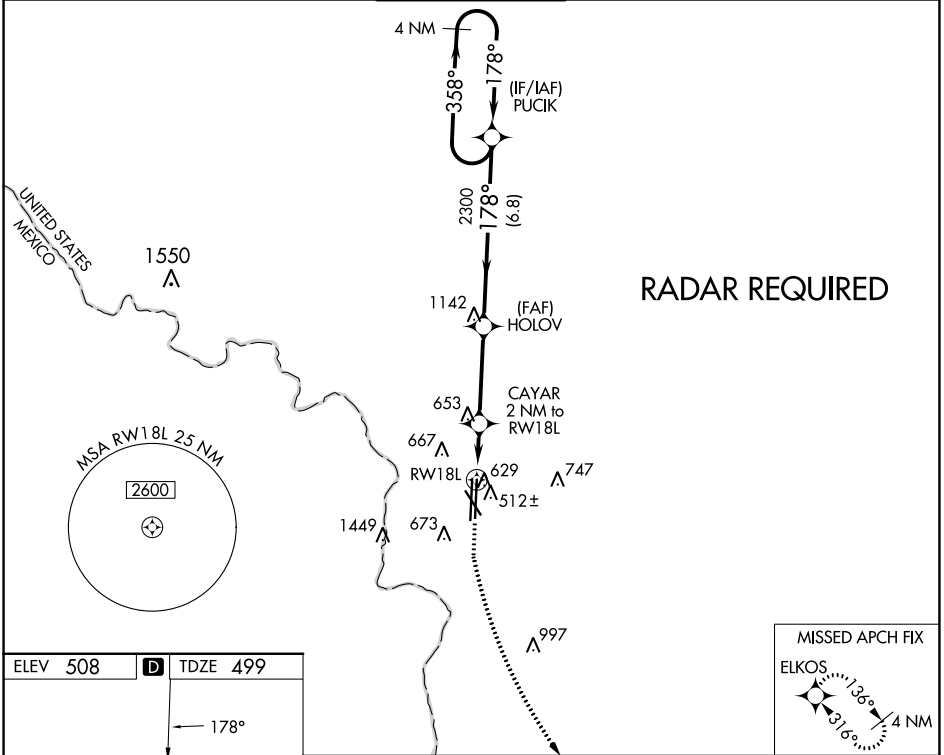
# RNAV (GPS) RWY 18L

LAREDO INTL (L.R.D)

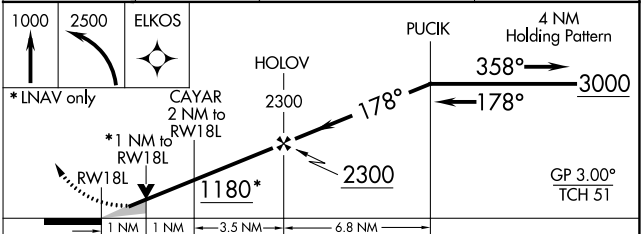
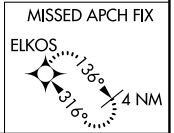
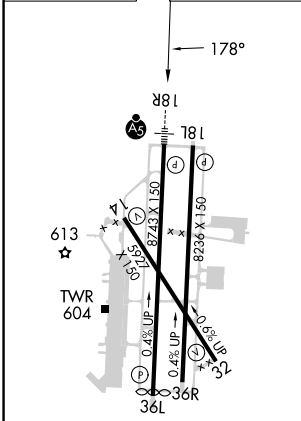
**⚠** For uncompensated Baro-VNAV systems, LNAV/VNAV NA below 1°C (34°F) or above 54°C (130°F).  
Circling NA west of Rwys 14 and 36L. DME/DME RNP-0.3 NA.

MISSED APPROACH: Climb to 2500 then climbing left turn to 2300 direct ELKOS and hold.

ATIS <b>125.775</b>	HOUSTON CENTER <b>127.8 307.2</b>	LAREDO TOWER * <b>120.1(CTAF) 257.9</b>	GND CON <b>121.8</b>	UNICOM <b>122.95</b>
------------------------	--------------------------------------	--	-------------------------	-------------------------



ELEV 508	<b>D</b>	TDZE 499
----------	----------	----------



CATEGORY	A	B	C	D	E
LPV DA	699- <sup>3</sup> / <sub>8</sub>		200 (200- <sup>3</sup> / <sub>8</sub> )		
LNAV/VNAV DA	810- <sup>7</sup> / <sub>8</sub>		311 (400- <sup>7</sup> / <sub>8</sub> )		
LNAV MDA	880-1	381 (400-1)	880- <sup>1</sup> / <sub>8</sub>	381 (400- <sup>1</sup> / <sub>8</sub> )	
<b>C</b> CIRCLING	940-1 432 (500-1)	980-1 472 (500-1)	1100- <sup>1</sup> / <sub>2</sub> 592 (600- <sup>1</sup> / <sub>2</sub> )	1200- <sup>2</sup> / <sub>4</sub> 692 (700- <sup>2</sup> / <sub>4</sub> )	1200- <sup>2</sup> / <sub>2</sub> 692 (700- <sup>2</sup> / <sub>2</sub> )

LAREDO, TEXAS  
MIRL Rwy 14-32  
HIRL Rwys 18R-36L and 18L-36R  
Amdt 1 01FEB18

27°33'N-99°28'W

# RNAV (GPS) RWY 18L

SC-3, 05 SEP 2024 to 03 OCT 2024

SC-3, 05 SEP 2024 to 03 OCT 2024