

VORTAC LRD <b>117.4</b> Chan <b>121</b>	APP CRS <b>139°</b>	Rwy Idg TDZE Apt Elev <b>5927</b> <b>508</b> <b>508</b>
---	------------------------	--

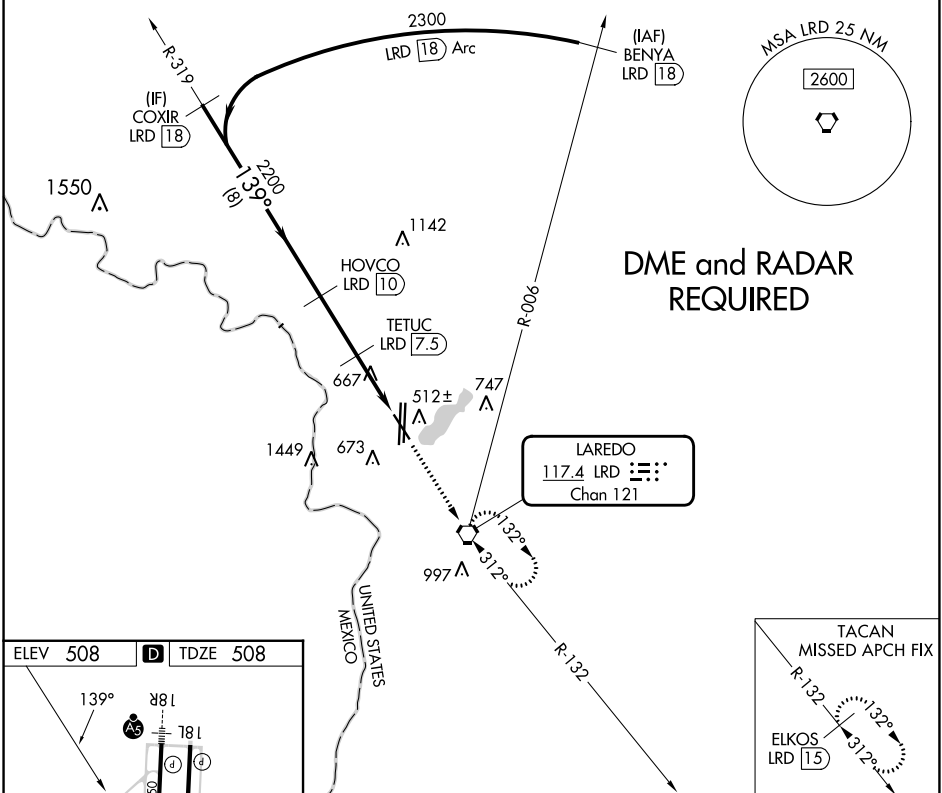
# VOR or TACAN RWY 14

LAREDO INTL (LRD)

**⚠** Circling NA west of Rwy 14 and 36L. DME required.

**⚠** MISSED APPROACH: Climb to 2500 direct LRD VORTAC and hold, continue climb-in-hold to 2500 (TACAN aircraft continue on LRD VORTAC R-132 to ELKOS/15 DME and hold SE, 312° inbound).

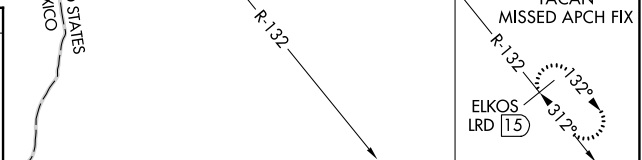
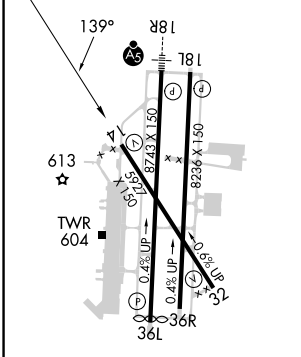
ATIS <b>125.775</b>	HOUSTON CENTER <b>127.8 307.2</b>	LAREDO TOWER * <b>120.1 (CTAF) 0 257.9</b>	GND CON <b>121.8</b>	UNICOM <b>122.95</b>
------------------------	--------------------------------------	---	-------------------------	-------------------------



SC-3, 05 SEP 2024 to 03 OCT 2024

SC-3, 05 SEP 2024 to 03 OCT 2024

ELEV 508	<b>D</b>	TDZE 508
----------	----------	----------



The profile view diagram shows the vertical profile of the approach. Key features include:
 

- Altitudes:** 2300, 2200, 1280, 2500.
- Distances:** 8 NM, 2.5 NM, 1.4 NM, 1.1 NM.
- LRD Stations:** COXIR LRD 18, HOVCO LRD 10, TETUC LRD 7.5, LRD 6.1, LRD 5.
- Angles:** 139°, 3.08° TCH 55.

CATEGORY	A	B	C	D	E
S-14	920-1	412 (500-1)	920-1¼	412 (500-1¼)	920-1½ 412 (500-1½)
<b>C</b> CIRCLING	940-1 432 (500-1)	980-1 472 (500-1)	1100-1½ 592 (600-1½)	1200-2¼ 692 (700-2¼)	1200-2½ 692 (700-2½)