

LOC/DME I-MAC <b>111.9</b> Chan <b>56</b>	APP CRS <b>105°</b>	Rwy Idg <b>4184</b> TDZE <b>430</b> Apt Elev <b>437</b>
-------------------------------------------------	------------------------	---------------------------------------------------------------

# LOC RWY 10

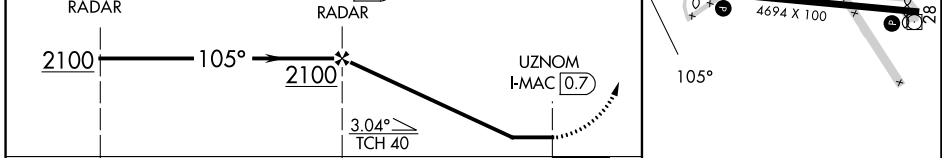
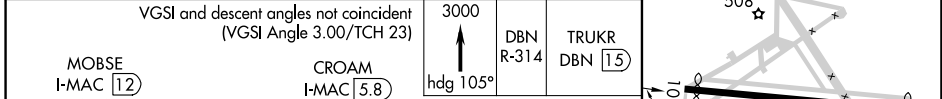
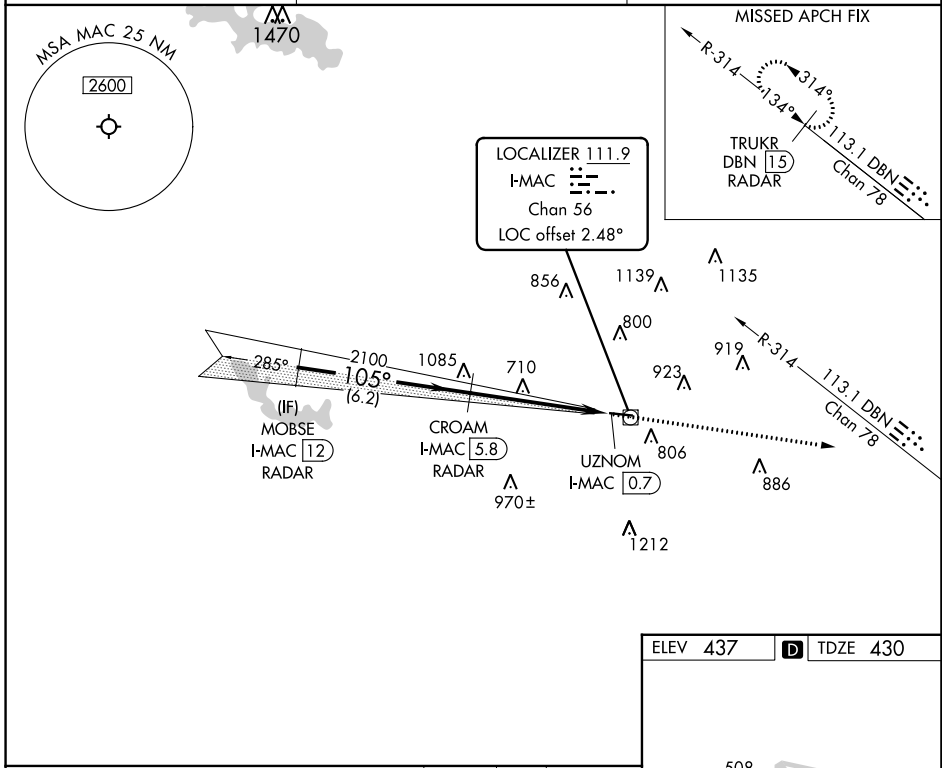
MACON DOWNTOWN (MAC)

RADAR required for procedure entry. DME or RADAR required.

⚠️ Rwy 10 helicopter visibility reduction below 3/4 SM NA. Use Middle Georgia Rgnl altimeter setting; when not received, use Robins AFB altimeter setting and increase all MDA 20 feet and S-LOC 10 visibility Cat C/D 1/2 SM.

MISSED APPROACH: Climb to 3000 on heading 105° and DBN VORTAC R-314 to TRUKR/DBN VORTAC 15 DME/ RADAR and hold.

MCN ASOS <b>120.775</b>	ATLANTA APP CON ★ <b>124.2 279.6</b>	UNICOM <b>123.0 (CTAF) 0</b>
----------------------------	-----------------------------------------	---------------------------------



ELEV 437	TDZE 430																	
<table border="1"> <thead> <tr> <th>CATEGORY</th> <th>A</th> <th>B</th> <th>C</th> <th>D</th> </tr> </thead> <tbody> <tr> <td>S-10</td> <td>1060-1</td> <td>630 (700-1)</td> <td>1060-1 3/4</td> <td>630 (700-1 3/4)</td> </tr> <tr> <td>CIRCLING</td> <td>1200-1</td> <td>763 (800-1)</td> <td>1320-2 3/4 883 (900-2 3/4)</td> <td>1480-3 1043 (1100-3)</td> </tr> </tbody> </table>				CATEGORY	A	B	C	D	S-10	1060-1	630 (700-1)	1060-1 3/4	630 (700-1 3/4)	CIRCLING	1200-1	763 (800-1)	1320-2 3/4 883 (900-2 3/4)	1480-3 1043 (1100-3)
CATEGORY	A	B	C	D														
S-10	1060-1	630 (700-1)	1060-1 3/4	630 (700-1 3/4)														
CIRCLING	1200-1	763 (800-1)	1320-2 3/4 883 (900-2 3/4)	1480-3 1043 (1100-3)														
MIRL Rwy 10-28 0																		

SE-4, 05 SEP 2024 to 03 OCT 2024

SE-4, 05 SEP 2024 to 03 OCT 2024