

LOC/DME I-MHT <b>109.1</b> Chan 28	APP CRS <b>352°</b>	Rwy Idg <b>7650</b> TDZE <b>265</b> Apt Elev <b>266</b>
--	------------------------	---

# ILS RWY 35 (SA CAT I)

MANCHESTER BOSTON RGNL (MHT)

From SHOWZ: RNAV 1-DME/DME/IRU or GPS required.  
DME or RADAR required.

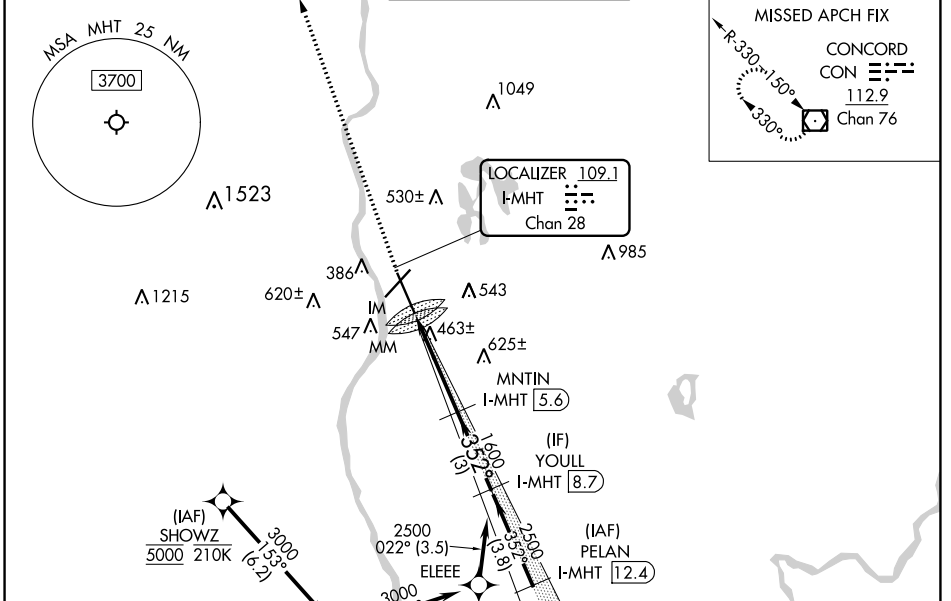
ALSF-2



MISSED APPROACH: Climb to 4000 direct CON VOR/DME and hold.

Rwy 35 helicopter visibility reduction below RVR 4000 NA. Requires specific OPSPEC, MSPEC, or LOA approval and use of HUD to DH.

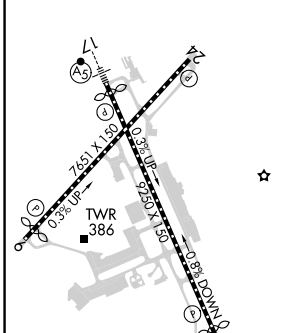
ATIS <b>119.55</b>	BOSTON APP CON <b>124.9 269.075</b>	MANCHESTER TOWER <b>121.3 239.025</b>	GND CON <b>121.9</b>	CLNC DEL <b>135.9</b>
-----------------------	--	--	-------------------------	--------------------------



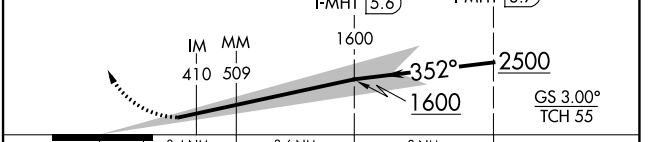
NE-1, 05 SEP 2024 to 03 OCT 2024

NE-1, 05 SEP 2024 to 03 OCT 2024

ELEV 266	D	TDZE 265
----------	---	----------



4000 CON VGS1 and ILS glidepath not coincident (VGS1 Angle 3.00/TCH 68).



CATEGORY	A	B	C	D
S-ILS 35	RA 138/14 150 DA 415			

## SA CATEGORY I ILS - SPECIAL AIRCREW & AIRCRAFT CERTIFICATION REQUIRED