

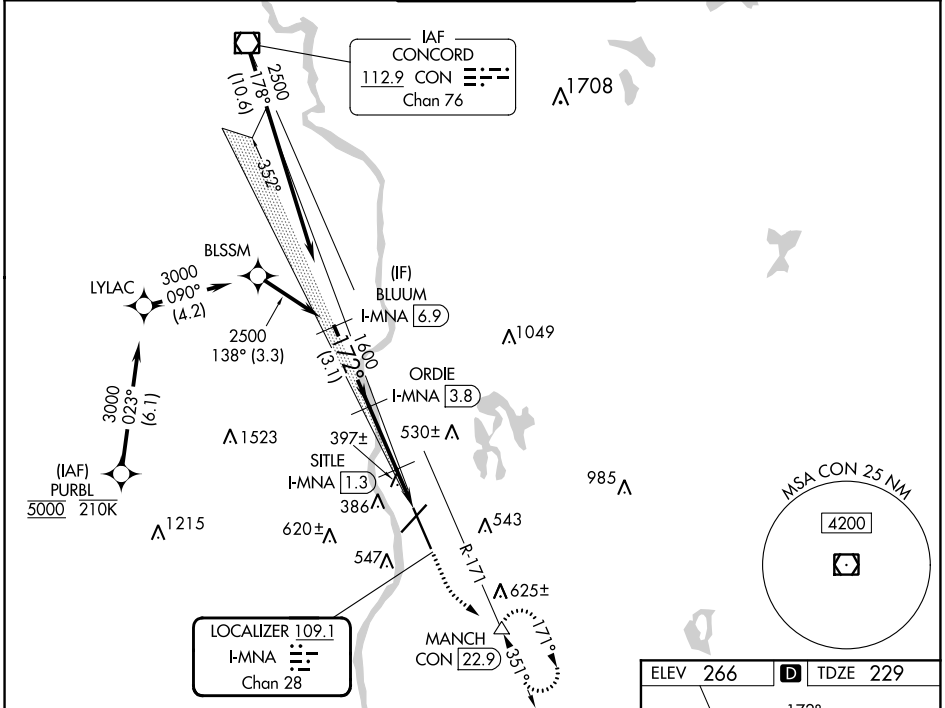
LOC/DME I-MNA <b>109.1</b> Chan 28	APP CRS <b>172°</b>	Rwy ldg <b>8914</b> TDZE <b>229</b> Apt Elev <b>266</b>
--	------------------------	---

# ILS or LOC RWY 17

MANCHESTER BOSTON RGNL (MHT)

RNP APCH - GPS. From PURBL. DME required.	MALSR 	MISSED APPROACH: Climb to 900 then climbing left turn to 2100 on heading 145° and on CON VOR/DME R-171 to MANCH/CON 22.9 DME and hold, continue climb-in-hold to 2100.
--	-----------	--

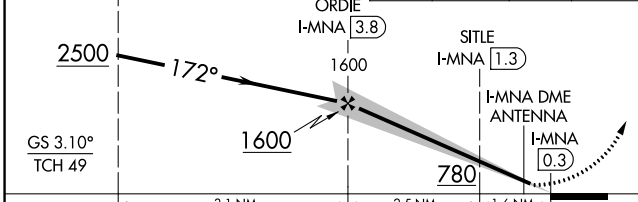
ATIS <b>119.55</b>	BOSTON APP CON <b>124.9 269.075</b>	MANCHESTER TOWER <b>121.3 239.025</b>	GND CON <b>121.9</b>	CLNC DEL <b>135.9</b>
-----------------------	--	--	-------------------------	--------------------------



NE-1, 05 SEP 2024 to 03 OCT 2024

NE-1, 05 SEP 2024 to 03 OCT 2024

VGSI and ILS glidepath not coincident (VGSI Angle 3.10/TCH 67).	900	2100	CON R-171	MANCH
---	-----	------	-----------	-------



CATEGORY	A	B	C	D
S-ILS 17	429/18		200 (200-½)	
S-LOC 17	660/24	431 (400-½)	660/40	431 (400-¾)
CIRCLING	880-1	614 (700-1)	980-2 714 (800-2)	1100-2¾ 834 (900-2¾)

