


WAAS CH 93807 W17A	APP CRS 171°	Rwy Idg 8914 TDZE 229 Apt Elev 266
--	------------------------	---

RNAV (GPS) Y RWY 17

MANCHESTER BOSTON RGNL (MHT)

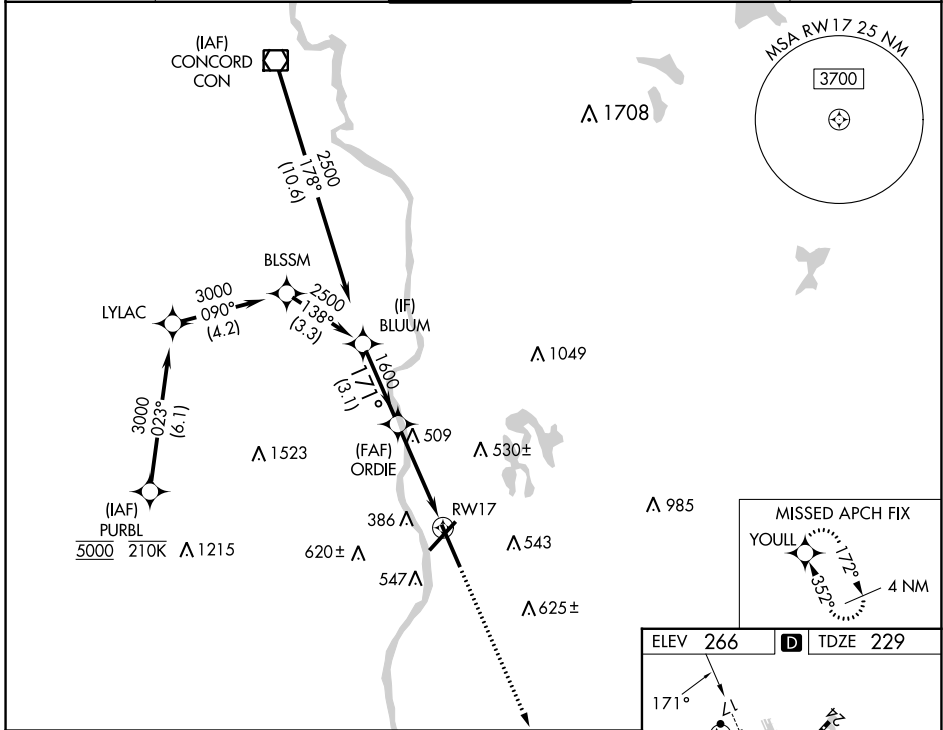
RNP APCH-GPS.

▽ For uncompensated Baro-VNAV systems, LNAV/VNAV NA below -19°C or above 54°C.
▲ For inop ALS, increase LNAV CAT A/B visibility to RVR 5500.

MALSR 

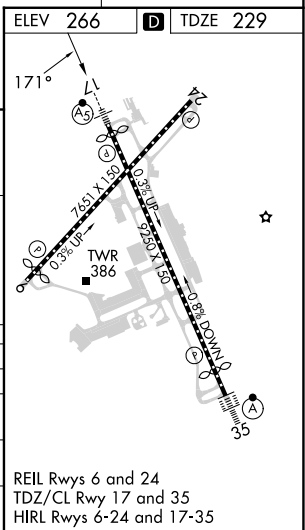
MISSED APPROACH: Climb to 2000 direct YOULL and hold.

ATIS 119.55	BOSTON APP CON 124.9 269.075	MANCHESTER TOWER 121.3 239.025	GND CON 121.9	CLNC DEL 135.9
-----------------------	--	--	-------------------------	--------------------------



VGSI and RNAV glidepath not coincident (VGSI Angle 3.10/TCH 67).

BLUUM	2500	171°	1600	1.4 NM to RWY 17	2000	YOULL
ORDIE	1600					
GP 3.10°	TCH 49					
	3.1 NM		2.7 NM	1.4 NM		
CATEGORY	A	B	C	D		
LPV DA		429/18	200 (200-½)			
LNAV/VNAV DA		760/55	531 (500-1)			
LNAV MDA	760/24	531 (500-½)	760/55	531 (500-1)		
C CIRCLING	880-1	614 (700-1)	980-2 714 (800-2)	1100-2¾ 834 (900-2¾)		



NE-1, 05 SEP 2024 to 03 OCT 2024

NE-1, 05 SEP 2024 to 03 OCT 2024