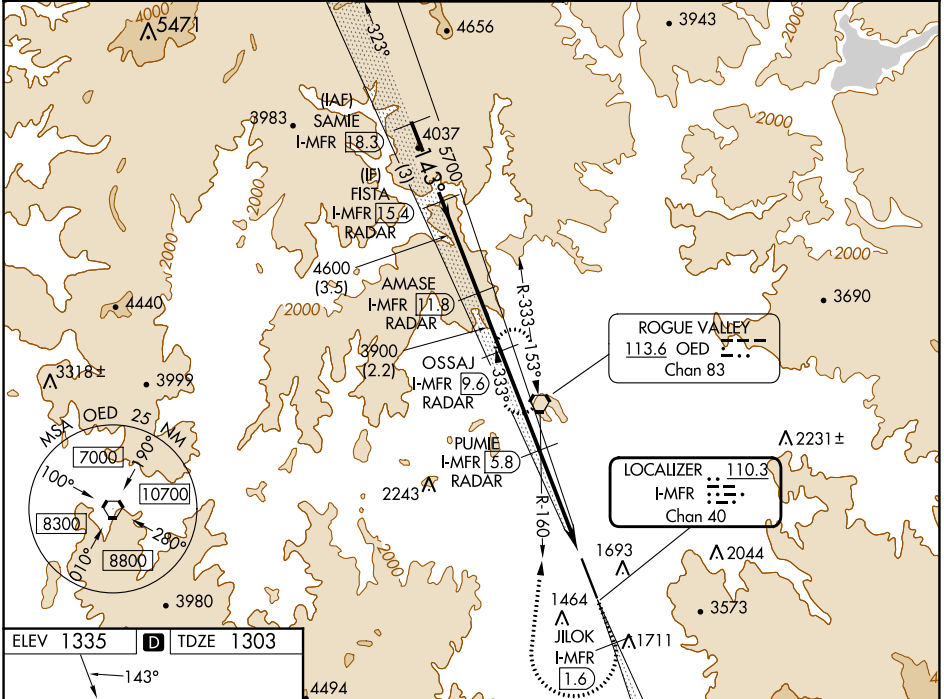


LOC/DME I-MFR	APP CRS	Rwy Idg	<b>8800</b>
<b>110.3</b>	<b>143°</b>	TDZE	<b>1303</b>
Chan <b>40</b>		Apt Elev	<b>1335</b>

# ILS or LOC RWY 14

## ROGUE VALLEY INTL-MEDFORD (MFR)

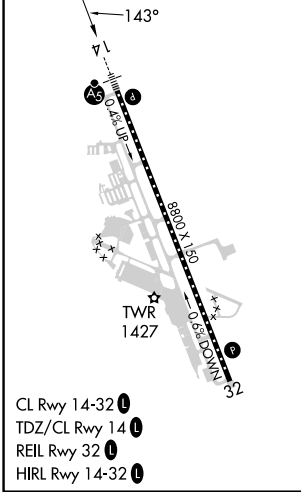
DME required. DME or RADAR required for procedure entry.		MALSR	MISSED APPROACH: Climb to 6600 on I-MFR SE course to JLOK/I-MFR 1.6 DME and climbing right turn on heading 350° and on OED VORTAC R-160 to OED VORTAC and hold, continue climb-in-hold to 6600. #Missed approach requires minimum climb of 331 feet per NM to 4100.		
<p><b>⚠</b> Circling NA for Cats C and D northeast of Rwy 14-32. When Medford altimeter setting not received, procedure NA. For inop ALS, increase S-ILS 14 visibility to 1½ SM, increase S-LOC 14# Cats C and D visibility to RVR 5500, increase S-LOC 14 Cats C and D visibility to 2½ SM.</p> <p><b>⊖</b> -3°C</p>	ATIS	CASCADE APP CON*	MEDFORD TOWER*	GND CON	UNICOM
	<b>127.25</b>	<b>124.3 379.9</b>	<b>119.4 (CTAF) 0257.8</b>	<b>121.8</b>	<b>122.95</b>



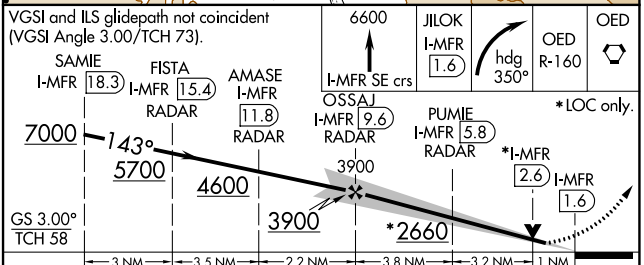
NW-1, 05 SEP 2024 to 03 OCT 2024

NW-1, 05 SEP 2024 to 03 OCT 2024

ELEV 1335	<b>D</b>	TDZE 1303
-----------	----------	-----------



- CL Rwy 14-32 **Ⓛ**
- TDZ/CL Rwy 14 **Ⓛ**
- REIL Rwy 32 **Ⓛ**
- HIRL Rwy 14-32 **Ⓛ**



CATEGORY	A	B	C	D
S-ILS 14#		1503/18	200 (200-½)	
S-ILS 14		1929-1½	626 (600-1½)	
S-LOC 14#	1680/24	377 (400-½)	1680/35	377 (400-¾)
S-LOC 14	2080/24 777 (800-½)	2080/40 777 (800-¾)	2080-1¾	777 (800-1¾)
<b>C</b> CIRCLING	2080-1 745 (800-1)	2080-1¼ 745 (800-1¼)	2080-2½ 745 (800-2½)	2340-3 1005 (1100-3)