

BNFSH TWO ARRIVAL(RNAV) Arrival Routes

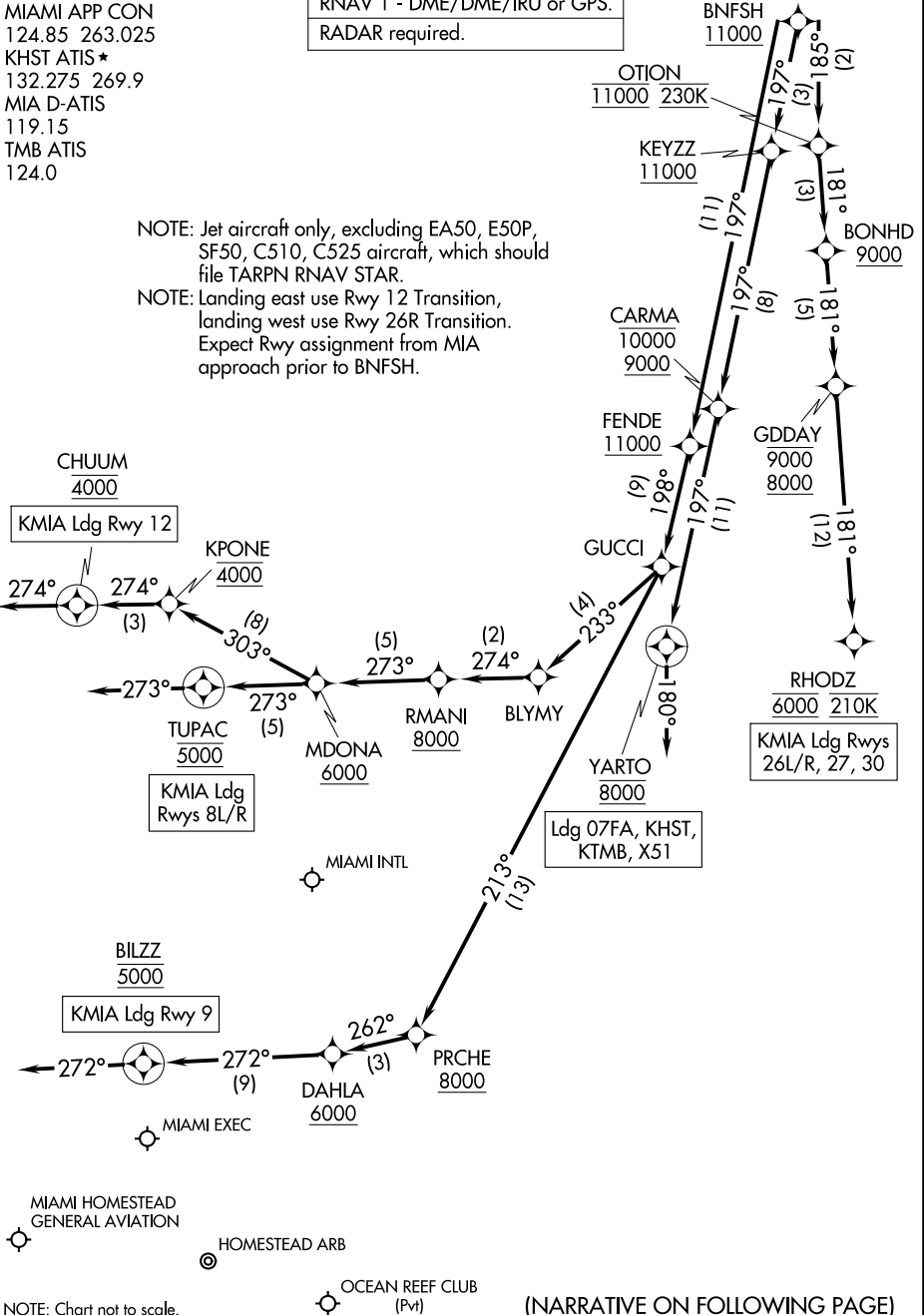
MIAMI, FLORIDA

MIAMI APP CON
 124.85 263.025
 KHST ATIS *
 132.275 269.9
 MIA D-ATIS
 119.15
 TMB ATIS
 124.0

RNAV 1 - DME/DME/IRU or GPS.
 RADAR required.

NOTE: Jet aircraft only, excluding EA50, E50P, SF50, C510, C525 aircraft, which should file TARPEN RNAV STAR.

NOTE: Landing east use Rwy 12 Transition, landing west use Rwy 26R Transition. Expect Rwy assignment from MIA approach prior to BNFSH.



SE-3, 05 SEP 2024 to 03 OCT 2024

SE-3, 05 SEP 2024 to 03 OCT 2024

NOTE: Chart not to scale.

(NARRATIVE ON FOLLOWING PAGE)

BNFSH TWO ARRIVAL(RNAV) Arrival Routes

MIAMI, FLORIDA