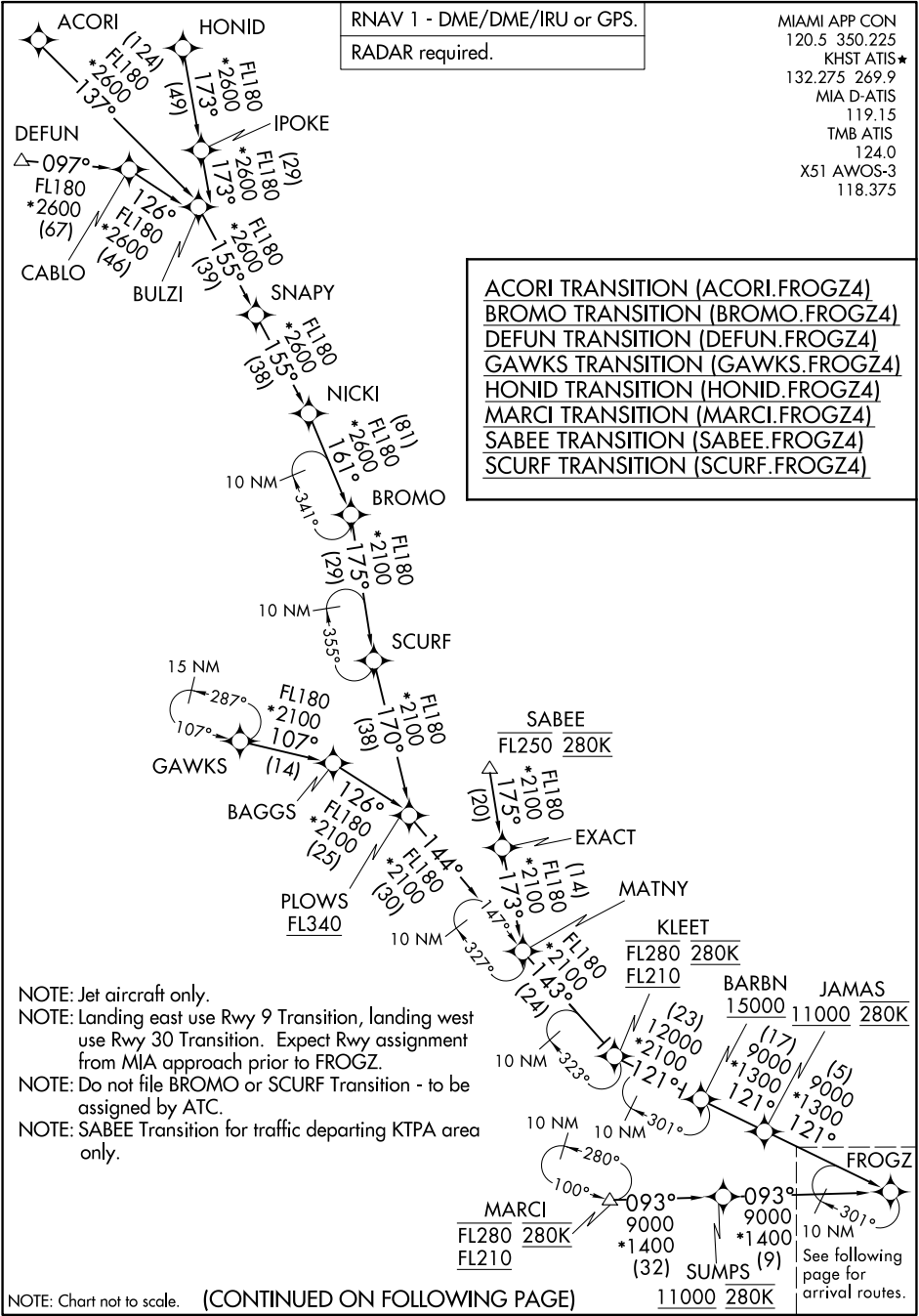


FROGZ FOUR ARRIVAL (RNAV) Transition Routes

MIAMI, FLORIDA



RNAV 1 - DME/DME/IRU or GPS.
 RADAR required.

- ACORI TRANSITION (ACORI.FROGZ4)
- BROMO TRANSITION (BROMO.FROGZ4)
- DEFUN TRANSITION (DEFUN.FROGZ4)
- GAWKS TRANSITION (GAWKS.FROGZ4)
- HONID TRANSITION (HONID.FROGZ4)
- MARCI TRANSITION (MARCI.FROGZ4)
- SABEE TRANSITION (SABEE.FROGZ4)
- SCURF TRANSITION (SCURF.FROGZ4)

MIAMI APP CON
 120.5 350.225
 KHST ATIS*
 132.275 269.9
 MIA D-ATIS
 119.15
 TMB ATIS
 124.0
 X51 AWOS-3
 118.375

SE-3, 05 SEP 2024 to 03 OCT 2024

SE-3, 05 SEP 2024 to 03 OCT 2024

- NOTE: Jet aircraft only.
- NOTE: Landing east use Rwy 9 Transition, landing west use Rwy 30 Transition. Expect Rwy assignment from MIA approach prior to FROGZ.
- NOTE: Do not file BROMO or SCURF Transition - to be assigned by ATC.
- NOTE: SABEE Transition for traffic departing KTPA area only.

NOTE: Chart not to scale. (CONTINUED ON FOLLOWING PAGE)

See following page for arrival routes.

FROGZ FOUR ARRIVAL (RNAV) Transition Routes

MIAMI, FLORIDA