

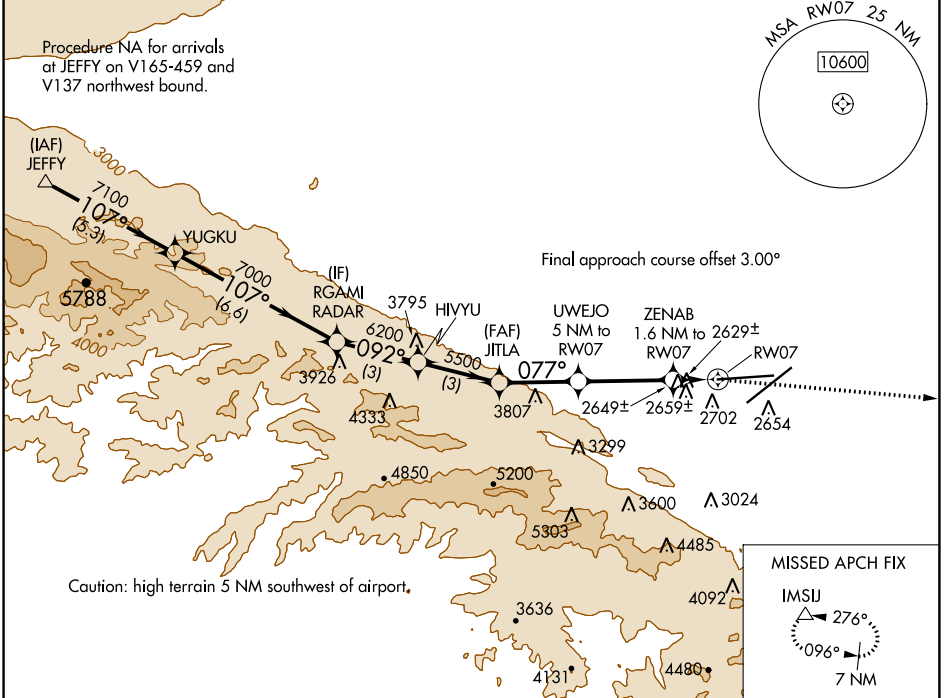
WAAS CH 53441 W07A	APP CRS 077°	Rwy ldg 12002 TDZE 2540 Apt Elev 2543
--	------------------------	--

RNAV (GPS) RWY 7

PALMDALE USAF PLANT 42 (PMD)

RNP APCH.	MISSED APPROACH: Climbing right turn to 7000 direct IMSJ and hold.
<p>Circling NA for Cats C and D south of Rws 4 and 25.</p>	

ATIS 118.275	JOSHUA APP CON 124.55 363.0	PALMDALE TOWER * 123.7 (CTAF) 0 317.6	GND CON 121.9 317.6
------------------------	---------------------------------------	---	-------------------------------



SW-3, 05 SEP 2024 to 03 OCT 2024

SW-3, 05 SEP 2024 to 03 OCT 2024

	ELEV 2543	TDZE 2540					
JEFFY	YUGKU	RGAMI	HJVYU	JITLA	UWEJO	ZENAB	IMSJ
8000	7100	7000	6200	5500	4440	3180	7000
	107°	092°	077°	3.50°	0.8 NM	0.8 NM	
	5.3 NM	6.6 NM	3 NM	3 NM	2.8 NM	3.4 NM	
CATEGORY	A	B	C	D			
LP MDA	2880-1			340 (400-1)			
LNAV MDA	2920-1			380 (400-1)			
CIRCLING	3020-1 477 (500-1)	3060-1 517 (600-1)	3140-1½ 597 (600-1½)	3740-3 1197 (1200-3)			
PALMDALE, CALIFORNIA Orig-A 21MAY20 34°38'N-118°05'W							
PALMDALE USAF PLANT 42 (PMD) RNAV (GPS) RWY 7 REIL Rws 4, 7, 22 and 25 HIRL Rws 4-22 and 7-25							

