

# HI-ILS or LOC/DME RWY 21L

LOC I-EMJ <b>110.9</b>	APCH CRS <b>213°</b>	Rwy ldg 9912 TDZE 1084 Arprt Elev 1084	[USAF]	LUKE AFB (KLUF)
---------------------------	-------------------------	---	--------	-----------------

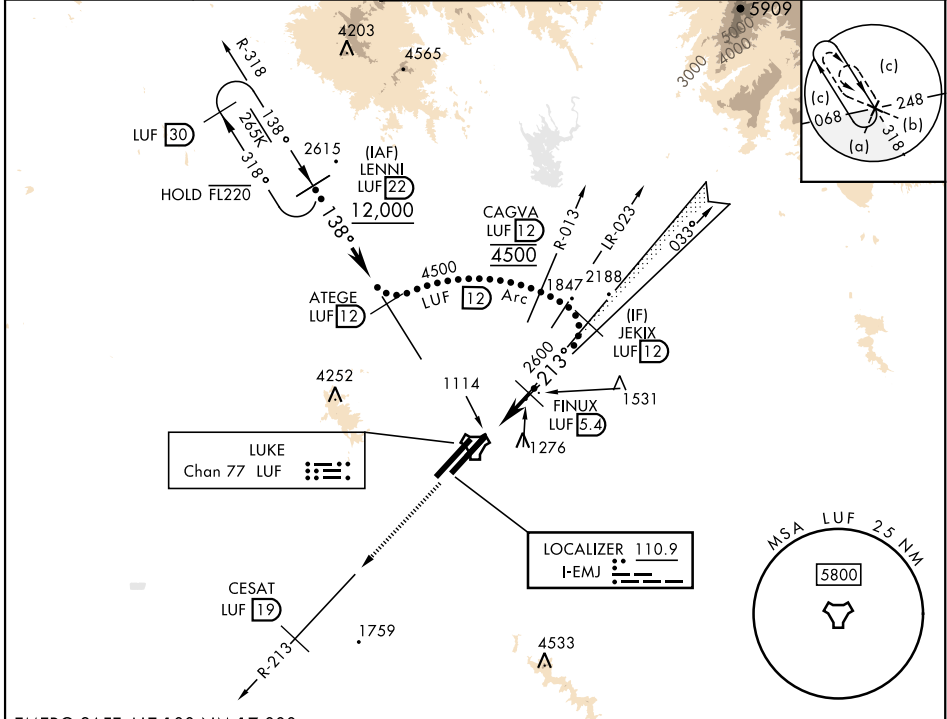
**RADAR required**

ALSF-1

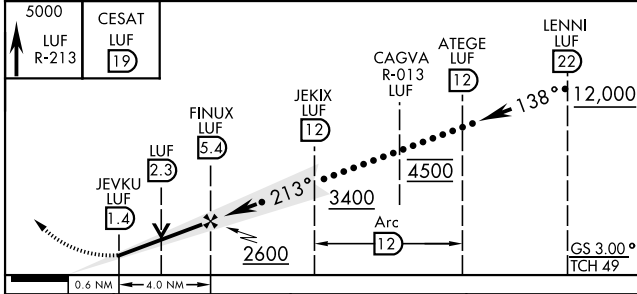
MISSED APPROACH: Climbing to 5000, intercept LUF TACAN R-213 to 19 DME (CESAT). Contact LUKE APP CON.

\* When ALS inop, increase vis to 3/4 mile.  
\*\* When ALS inop, increase vis to 1 1/8 miles.

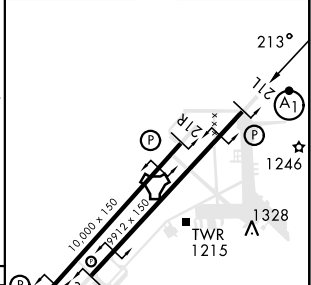
ATIS ★ <b>134.925 269.85</b>	APP CON ★ <b>118.15 363.125</b>	TOWER ★ <b>119.1 379.9</b>	GND CON ★ <b>133.175 335.8</b>	CLNC DEL ★ <b>126.25 273.475</b>
---------------------------------	------------------------------------	-------------------------------	-----------------------------------	-------------------------------------



EMERG SAFE ALT 100 NM 17,000



ELEV	1084	TDZE	1084
------	------	------	------



CATEGORY	C	D	E
S-ILS 21L *	1284-1/2	200 (200-1/2)	
S-LOC/ DME 21L **	1600-1	516 (600-1)	
SIDESTEP 21R	1600-2	516 (600-2)	
CIRCLING	NOT AUTHORIZED		

HIRL all rwys

# HI-ILS or LOC/DME RWY 21L

SW-4, 05 SEP 2024 to 03 OCT 2024

SW-4, 05 SEP 2024 to 03 OCT 2024