

# HI-TACAN RWY 21L

TACAN LUF Chan <b>77</b>	APCH CRS <b>216°</b>	Rwy Idg <b>9912</b> TDZE <b>1084</b> Arprt Elev <b>1084</b>
-----------------------------	-------------------------	---

[USAF]

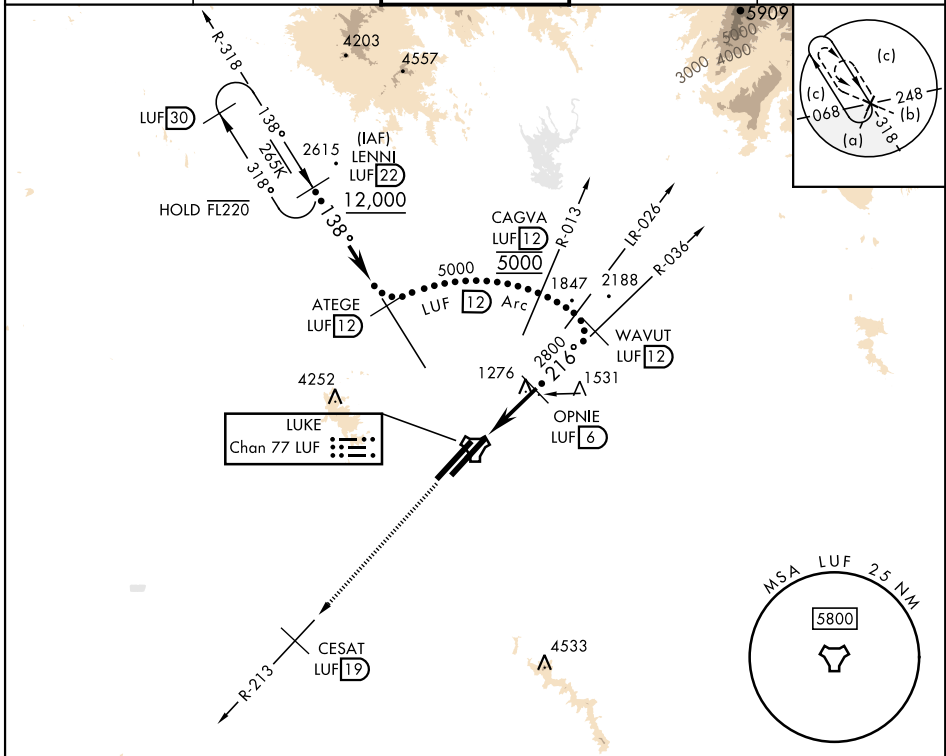
LUKE AFB (KLUF)

ALSF-1
 

 MISSED APPROACH: Climbing to 5000, intercept LUF TACAN R-213 to 19 DME (CESAT). Contact LUKE APP CON.

\* When ALS inop, increase vis to 1½ miles.

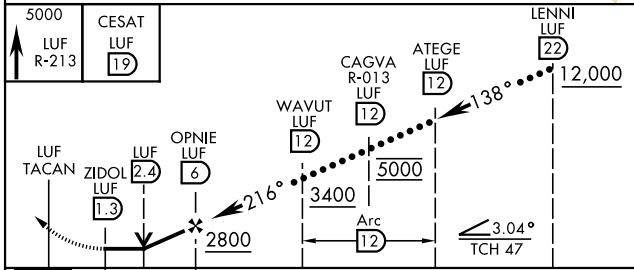
ATIS ★ <b>134.925 269.85</b>	APP CON ★ <b>118.15 363.125</b>	TOWER ★ <b>119.1 379.9</b>	GND CON ★ <b>133.175 335.8</b>	CLNC DEL ★ <b>126.25 273.475</b>
---------------------------------	------------------------------------	-------------------------------	-----------------------------------	-------------------------------------



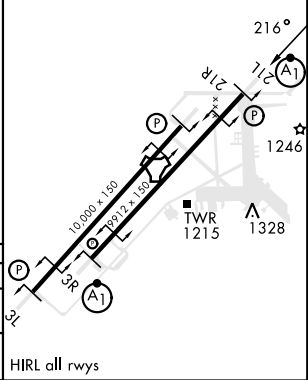
SW-4, 05 SEP 2024 to 03 OCT 2024

SW-4, 05 SEP 2024 to 03 OCT 2024

EMERG SAFE ALT 100 NM 17,000



ELEV 1084	TDZE 1084
-----------	-----------



CATEGORY	C	D	E
S-21L *	1640-1½	556	(600-1½)
CIRCLING	NOT AUTHORIZED		

# HI-TACAN RWY 21L