

(LENNI.LENNI4) 24193

LENNI FOUR ARRIVAL

AL-321 (FAA)

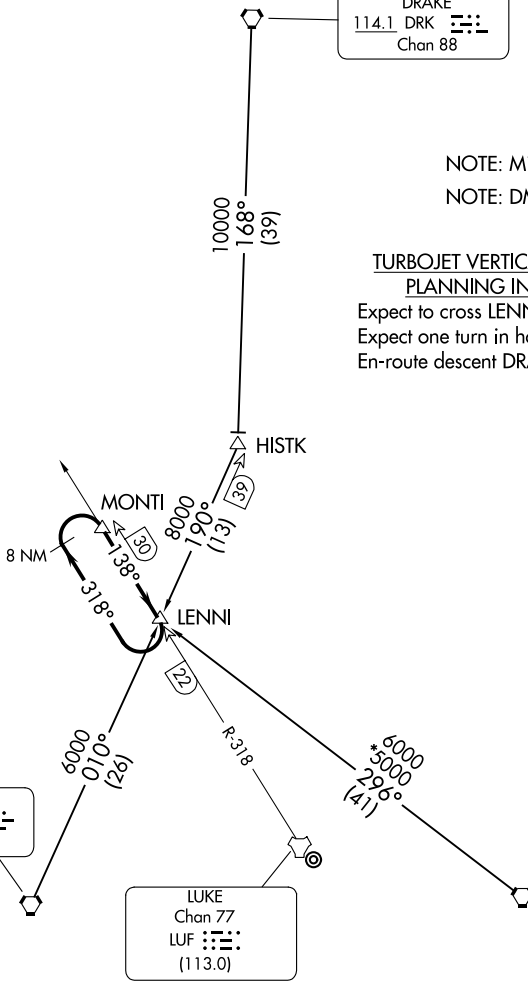
LUKE AFB (LUF)
GLENDALE, ARIZONA

ALBUQUERQUE CENTER
128.45 289.9
LUKE RAPCON ★
118.15 363.125
LUKE TOWER ★
119.1 379.9
ATIS ★
134.925 269.85
METRO
267.4

DRAKE
114.1 DRK
Chan 88

NOTE: Military only.
NOTE: DME required.

TURBOJET VERTICAL NAVIGATION
PLANNING INFORMATION
Expect to cross LENNI at FL220.
Expect one turn in holding at LENNI.
En-route descent DRAKE Transition only.



NOTE: Chart not to scale.

ARRIVAL ROUTE DESCRIPTION

BUCKEYE TRANSITION (BXK.LENNI4): From over BXK VORTAC on BXK R-010 to LENNI. Thence

DRAKE TRANSITION (DRK.LENNI4): From over DRK VORTAC on DRK R-168 and BXK R-010 to LENNI. Thence

PHOENIX TRANSITION (PXR.LENNI4): From over PXR VORTAC on PXR R-296 to LENNI. Thence

. . . . expect one turn in holding at LENNI followed by HI-TACAN, HI-ILS or LOC/DME to Luke AFB.

LENNI FOUR ARRIVAL

(LENNI.LENNI4) 14JUL22

GLENDALE, ARIZONA
LUKE AFB (LUF)

SW-4, 05 SEP 2024 to 03 OCT 2024

SW-4, 05 SEP 2024 to 03 OCT 2024