

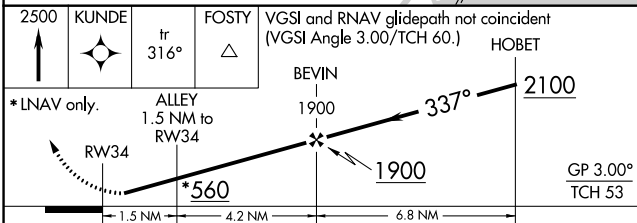
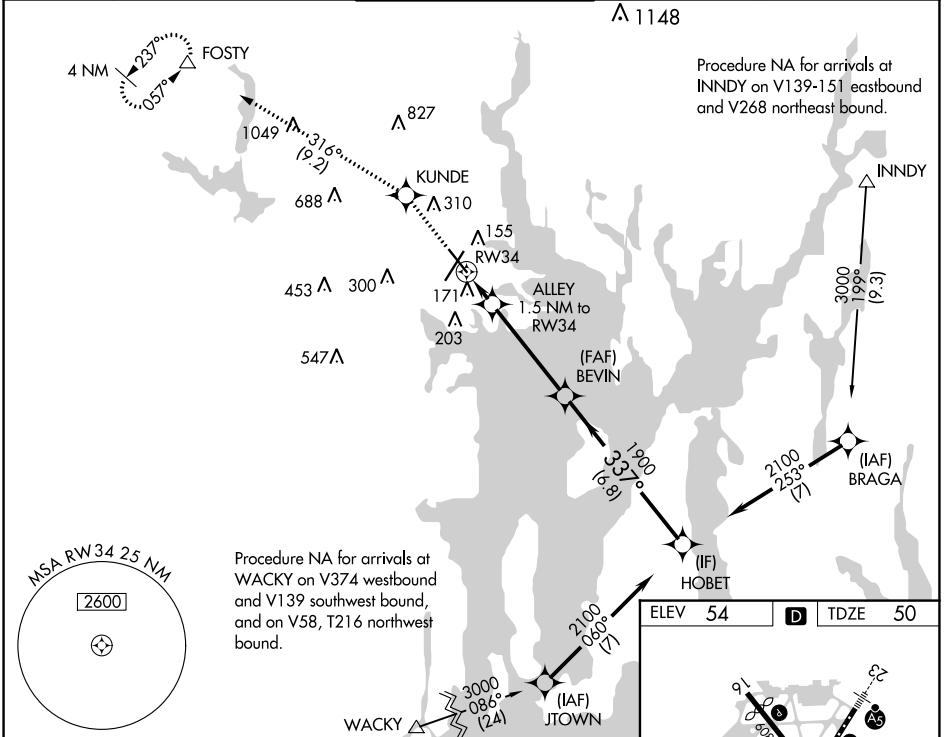
WAAS CH <b>58023</b> <b>W34A</b>	APP CRS <b>337°</b>	Rwy Idg TDZE Apt Elev	<b>6081</b> <b>50</b> <b>54</b>
--	------------------------	-----------------------------	---------------------------------------

# RNAV (GPS) RWY 34

RHODE ISLAND TF GREEN INTL (PVD)

RNP APCH ▼ ▲ For uncompensated Baro-VNAV systems, LNAV/VNAV NA below -16°C or above 54°C. For inop MALS, increase LNAV/VNAV all Cats visibility to RVR 5000. For inop MALS, increase LNAV Cat A/B visibility to RVR 5500, and Cat C/D visibility to RVR 6000. Rwy 34 helicopter visibility reduction below RVR 4000 NA.	MALS 45 MISSED APPROACH: Climb to 2500 direct KUNDE and on track 316° to FOSTY and hold.
---	---

D-ATIS <b>124.2</b>	PROVIDENCE APP CON * <b>123.675 244.875</b>	PROVIDENCE TOWER * <b>120.7 (CTAF) 0 257.8</b>	GND CON <b>121.9 348.6</b>	CLNC DEL <b>126.65 348.6</b>
------------------------	--	---	-------------------------------	---------------------------------



ELEV 54	TDZE 50
---------	---------

CATEGORY	A	B	C	D
LPV DA		330/40	280 (300-¾)	
LNAV/VNAV DA		349/40	299 (300-¾)	
LNAV MDA		440/40	390 (400-¾)	
CIRCLING	560-1 506 (600-1)	640-1 586 (600-1)	640-1½ 586 (600-1½)	860-2½ 806 (900-2½)

TDZ/CL Rwy 5	8
REIL Rwy 16	8
HIRL Rws 5-23 and 16-34	8

NE-1, 05 SEP 2024 to 03 OCT 2024

NE-1, 05 SEP 2024 to 03 OCT 2024