

APP CRS	Rwy Idg	8700
227°	TDZE	50
	Apt Elev	55

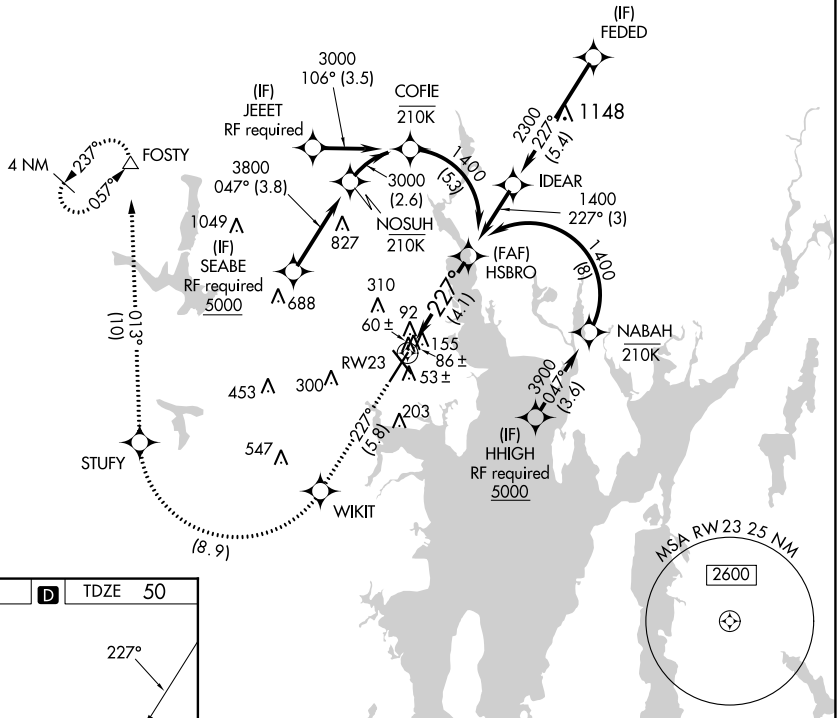
RNAV (RNP) Z RWY 23

RHODE ISLAND TF GREEN INTL (PVD)

<p>▼ For uncompensated Baro-VNAV systems, procedure NA below -15°C (5°F) or above 48°C (118°F). RF required. For inop MALSRL, increase RNP 0.30 all Cats visibility to 1¼. GPS Required.</p>	<p>MALSRL</p>	<p>Climb to 2500 on track 227° to WIKIT and right turn to STUFY and on track 013° to FOSTY and hold.</p>

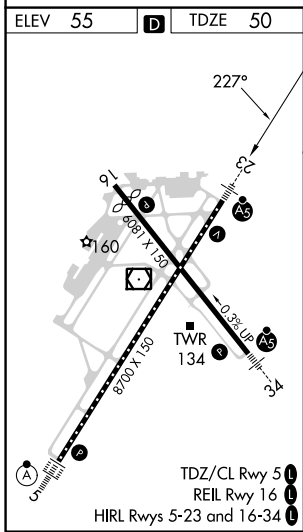
D-ATIS	PROVIDENCE APP CON *	PROVIDENCE TOWER *	GND CON	CLNC DEL
124.2	123.675 244.875	120.7 (CTAF) 257.8	121.9 348.6	126.65 348.6

RADAR REQUIRED



NE-1, 05 SEP 2024 to 03 OCT 2024

NE-1, 05 SEP 2024 to 03 OCT 2024



2500	WIKIT	STUFY	tr 013°	FOSTY	HSBRO
tr 227°					1400
<p>VGSI and RNAV glidepath not coincident (VGSI Angle 3.00/TCH 41).</p>					
<p>See planview for multiple IF locations.</p>					
<p>GP 3.00° TCH 5T</p>					
CATEGORY	A	B	C	D	
RNP 0.30 DA	434/40 384 (400-¾)				
<h3>AUTHORIZATION REQUIRED</h3>					