

PROVIDENCE, RHODE ISLAND

AL-333 (FAA)

24193

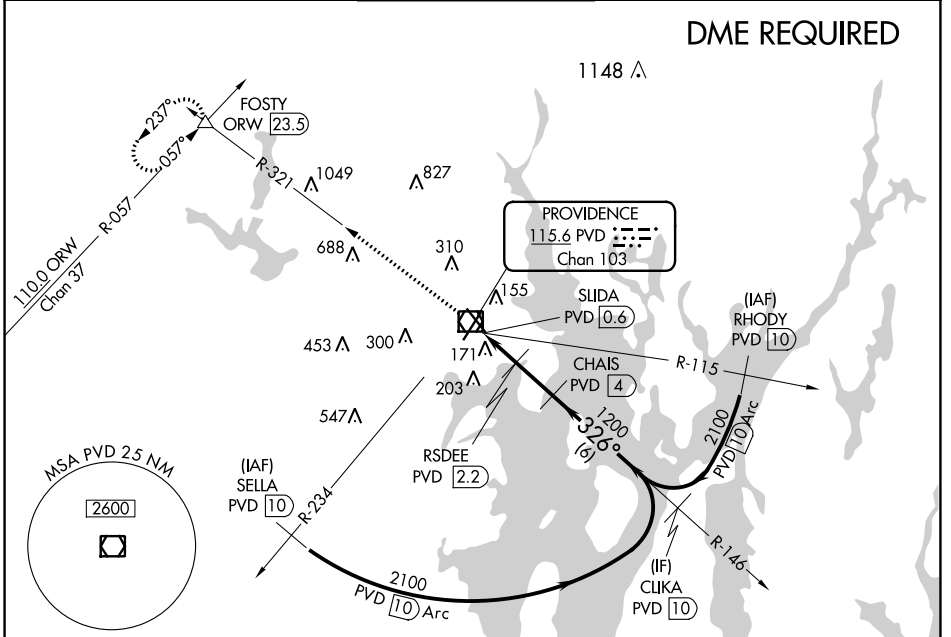
VOR/DME PVD <b>115.6</b> Chan <b>103</b>	APP CRS <b>326°</b>	Rwy Idg TDZE Apt Elev <b>6081</b> <b>50</b> <b>54</b>
--	------------------------	--

# VOR Z RWY 34

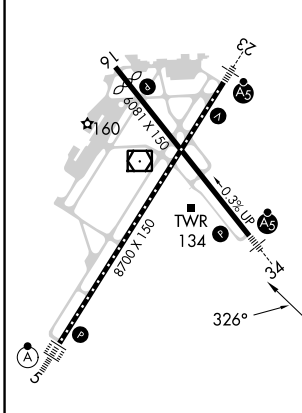
RHODE ISLAND TF GREEN INTL (PVD)

	Rwy 34 helicopter visibility reduction below RVR 4000 NA. DME required. For inop ALS, increase Cat A/B visibility to RVR 5500, and Cat C/D to RVR 6000.		MISSED APPROACH: Climb to 2500 on PVD VOR/DME R-321 to FOSTY INT/ ORW 23.5 DME and hold.
--	--	--	--

D-ATIS <b>124.2</b>	PROVIDENCE APP CON * <b>123.675 244.875</b>	PROVIDENCE TOWER * <b>120.7</b> (CTAF) <b>0 257.8</b>	GND CON <b>121.9 348.6</b>	CLNC DEL <b>126.65 348.6</b>
------------------------	--	--	-------------------------------	---------------------------------



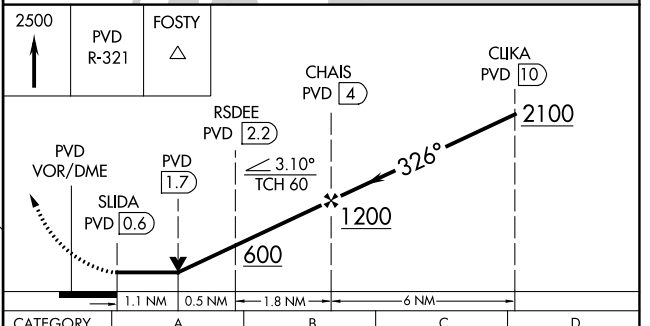
ELEV 54	<b>D</b>	TDZE 50
---------	----------	---------



TDZ/CL Rwy 5

REIL Rwy 16

HIRL Rwy 5-23 and 16-34



CATEGORY	A	B	C	D
S-34		440/40	390 (400-3/4)	
CIRCLING	560-1 506 (600-1)	640-1 586 (600-1)	640-1 1/2 586 (600-1 1/2)	860-2 1/2 806 (900-2 1/2)

PROVIDENCE, RHODE ISLAND  
Amdt 6 07DEC17

41°43'N-71°26'W

# RHODE ISLAND TF GREEN INTL (PVD)

## VOR Z RWY 34

NE-1, 05 SEP 2024 to 03 OCT 2024

NE-1, 05 SEP 2024 to 03 OCT 2024