

WIPOR THREE ARRIVAL (RNAV)

NE-1, 05 SEP 2024 to 03 OCT 2024

ARRIVAL ROUTE DESCRIPTION

ALBANY TRANSITION (ALB.WIPOR3):

HANCOCK TRANSITION (HNK.WIPOR3):

HINGZ TRANSITION (HINGZ.WIPOR3):

From WIPOR on track 142° to ORW VOR/DME, then on track 129° to SAUGY.

Landing KPVD Rwys 5, 34: From SAUGY on track 129° to LAFAY, then on track 129°.

Expect radar vectors to final approach course.

Landing KPVD Rwys 16, 23: From SAUGY on track 055° to WAWIK, then on track 049° to SEABE.

Then on track 047° to NOSUH, then on track 047°. Expect radar vectors to final approach course.

Landing KOGU, KUUU, KEWB, all rwys: From WIPOR on track 142° to ORW VOR/DME, then on

track 129° to SAUGY, then on track 129° to LAFAY, then on track 129°. Expect radar vectors to

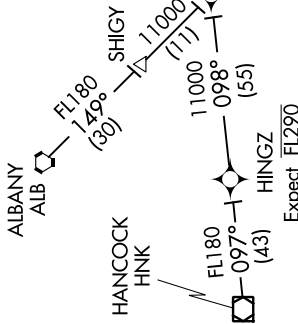
destination airport and final approach course.

Landing KSFZ all rwys: From WIPOR on track 142° to ORW VOR/DME, then on track 129° to SAUGY,

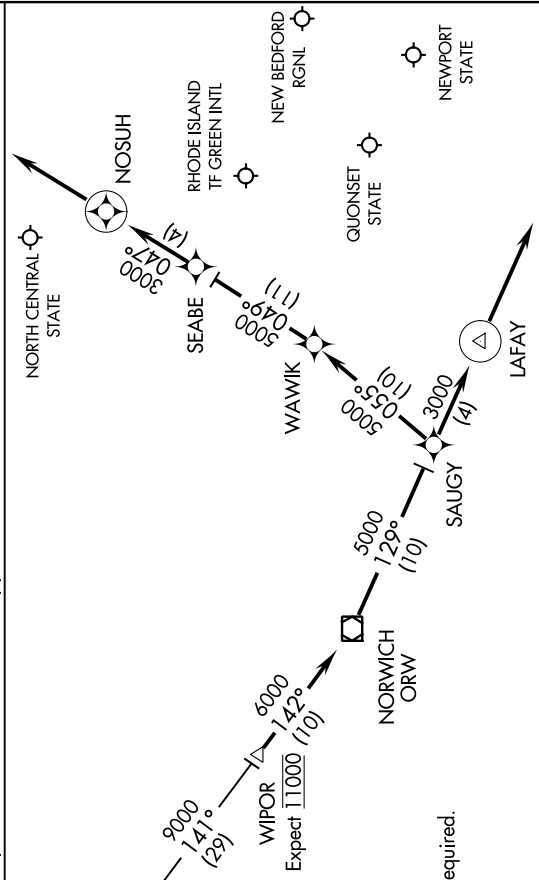
then on track 055° to WAWIK, then on track 049° to SEABE, then on track 047° to NOSUH, then on

track 047°. Expect radar vectors to final approach course.

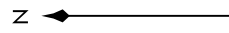
PROVIDENCE APP CON★
123.675 244.875
EWB ATIS
126.85
PVD D-ATIS
124.2



NELIE
Expect to cross 20 NM
NW FL210



NOTE: RADAR required.
NOTE: RNAV 1.
NOTE: DME/DME/IRU or GPS required.



NOTE: Chart not to scale.

WIPOR THREE ARRIVAL (RNAV)

(WIPOR.WIPOR3) 13NOV14

NE-1, 05 SEP 2024 to 03 OCT 2024