

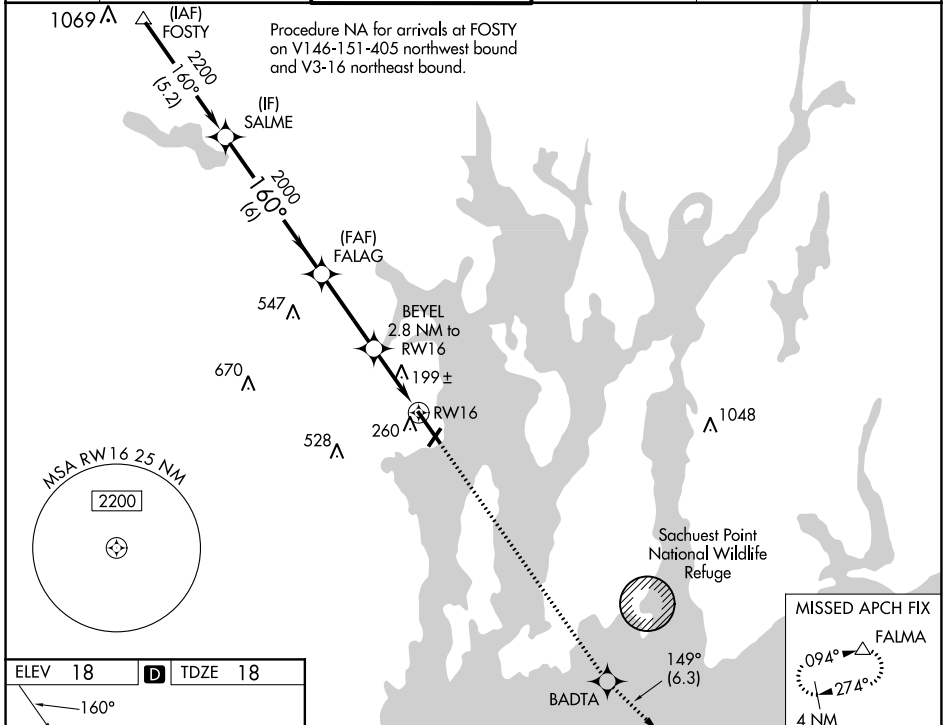
WAAS CH <b>93705</b> <b>W16A</b>	APP CRS <b>160°</b>	Rwy Idg <b>7100</b> TDZE <b>18</b> Apt Elev <b>18</b>
--	------------------------	---

# RNAV (GPS) RWY 16

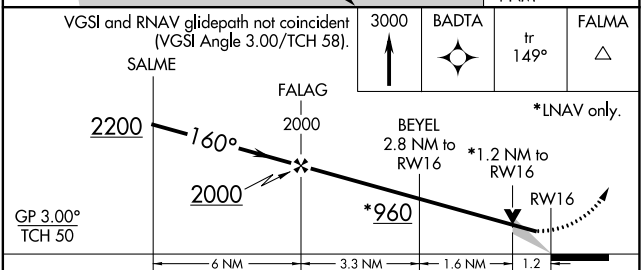
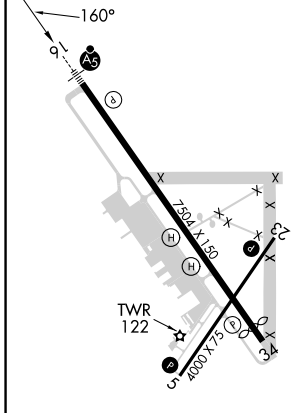
QUONSET STATE (OQU)

<p><b>⚠</b> For uncompensated Baro-VNAV systems, LNAV/VNAV NA below -15°C (5°F) or above 54°C (130°F). Circling Rwy 5 NA at night. DME/DME RNP-0.3 NA.</p>	<p>MALSR</p>	<p>MISSED APPROACH: Climb to 3000 direct BADTA and on track 149° to FALMA and hold.</p>
--	--------------	---

ATIS * <b>118.6</b>	PROVIDENCE APP CON * <b>123.675 244.875</b>	QUONSET TOWER * <b>126.35 (CTAF) 0 252.9</b>	GND CON <b>134.5 226.675</b>	CLNC DEL <b>134.5</b>	UNICOM <b>122.95</b>
---------------------	---	--	------------------------------	-----------------------	----------------------



ELEV 18	<b>D</b>	TDZE 18
---------	----------	---------



CATEGORY	A	B	C	D
LPV DA	218-1/2 200 (200-1/2)			
LNAV/VNAV DA	442-3/4 424 (500-3/4)			
LNAV MDA	460-1/2 442 (500-1/2)			
<b>C</b> CIRCLING	620-1 602 (700-1)	620-1 3/4 602 (700-1 3/4)		880-2 3/4 862 (900-2 3/4)

NE-1, 05 SEP 2024 to 03 OCT 2024

NE-1, 05 SEP 2024 to 03 OCT 2024