

(SLENA1.SLENA) 24025

AL-372 (FAA)

STINSON MUNI (SSF)
SAN ANTONIO, TEXAS

SLENA ONE DEPARTURE (RNAV)

SAN ANTONIO DEP CON
125.7 290.225
ATIS
128.8
CLNC DEL (When twr closed)
121.7
GND CON
121.7 379.9
STINSON TOWER*
118.2 379.9

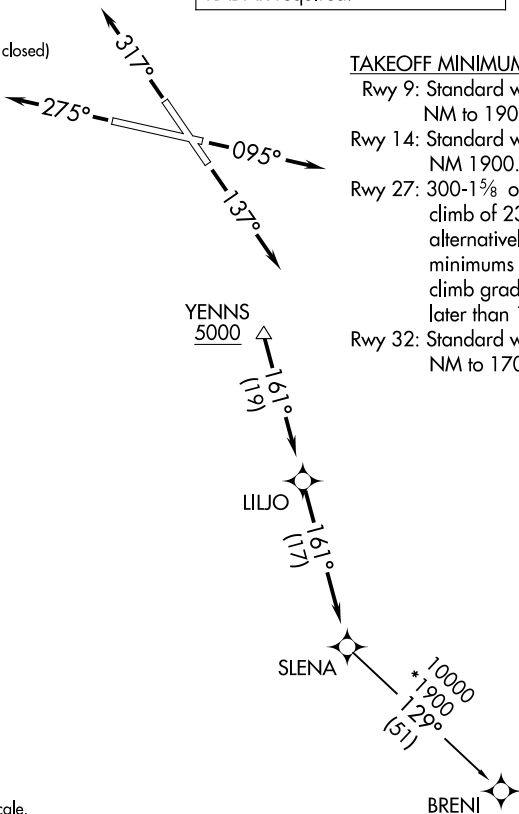
RNAV 1 - DME/DME IRU or GPS.

RADAR required.

**TOP ALTITUDE:
ASSIGNED BY ATC**

TAKEOFF MINIMUMS

- Rwy 9: Standard with minimum climb of 230'/NM to 1900.
- Rwy 14: Standard with minimum climb of 220'/NM 1900.
- Rwy 27: 300-1 $\frac{1}{2}$ or standard with minimum climb of 230'/NM to 900, or alternatively, with standard takeoff minimums and a normal 200'/NM climb gradient, takeoff must occur no later than 1800' prior to DER.
- Rwy 32: Standard with minimum climb of 230'/NM to 1700.



NOTE: Chart not to scale.

DEPARTURE ROUTE DESCRIPTION

- TAKEOFF RUNWAY 9:** Climb on heading 095° or as assigned by ATC, for vectors to YENNS, thence
- TAKEOFF RUNWAY 14:** Climb on heading 137° or as assigned by ATC, for vectors to YENNS, thence
- TAKEOFF RUNWAY 27:** Climb on heading 275° or as assigned by ATC, for vectors to YENNS, thence
- TAKEOFF RUNWAY 32:** Climb on heading 317° or as assigned by ATC, for vectors to YENNS, thence

. . . . on track 161° to LILJO, then on track 161° to SLENA, then on transition.
Maintain ATC assigned altitude.

BRENI TRANSITION (SLENA1.BRENI)

SLENA ONE DEPARTURE (RNAV)
(SLENA1.SLENA) 25JAN24

SAN ANTONIO, TEXAS
STINSON MUNI (SSF)

SC-3, 05 SEP 2024 to 03 OCT 2024

SC-3, 05 SEP 2024 to 03 OCT 2024