

(DYAMD.DYAMD5) 19003

# DYAMD FIVE ARRIVAL (RNAV)

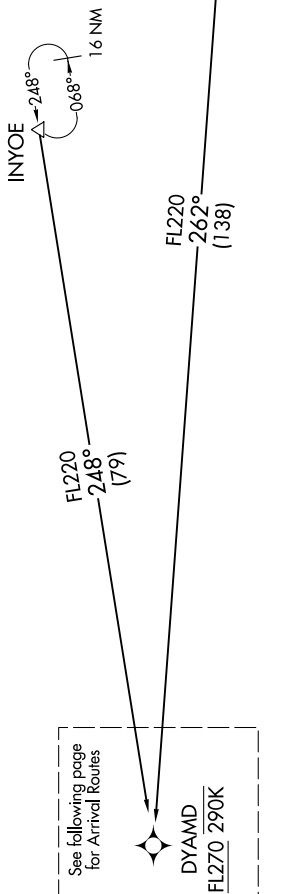
AL-375 (FAA)

## Transition Routes

SAN FRANCISCO INTL (SFO)

SAN FRANCISCO, CALIFORNIA

OAKLAND CENTER  
 134.37 281.5  
 NORCAL APP CON  
 128.325 254.3  
 D-ATIS  
 113.7 115.8 118.85  
 SAN FRANCISCO TOWER  
 120.5 269.1  
 GND CON  
 121.8



See following page  
 for Arrival Routes

DYAMD  
 FL270 290K

- NOTE: RNAV 1.
- NOTE: DME/DME/IRU or GPS required.
- NOTE: Expect to receive "descend via" clearance from Oakland Center. Northern California TRACON will assign landing runway.
- NOTE: RADAR required for non-GPS equipped aircraft.

INYOE TRANSITION (INYOE.DYAMD5)

RUSME TRANSITION (RUSME.DYAMD5)

(CONTINUED ON FOLLOWING PAGE)

NOTE: Chart not to scale.

# DYAMD FIVE ARRIVAL (RNAV)

(DYAMD.DYAMD5) 03JAN19

## Transition Routes

SAN FRANCISCO, CALIFORNIA

SAN FRANCISCO INTL (SFO)