

| | | |
|--|------------------------|---|
| WAAS CH 53533 W19B | APP CRS 194° | Rwy Idg 7650 TDZE 11 Apt Elev 13 |
|--|------------------------|---|

RNAV (GPS) Y RWY 19R

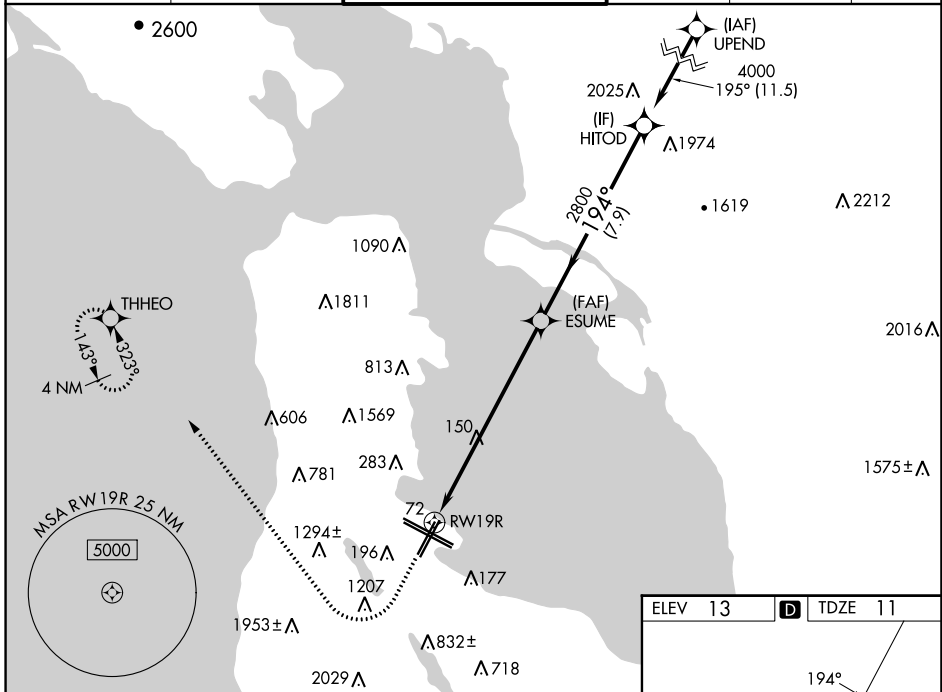
SAN FRANCISCO INTL (SFO)

RNP APCH-GPS.

⚠ LNAV procedure NA during simultaneous operations. Use of FD or AP required during simultaneous operations. For uncompensated Baro-VNAV systems, LNAV/VNAV NA below 4°C or above 54°C. Simultaneous approach authorized. Simultaneous operations require use of vertical guidance; maintain last assigned altitude until established on glidepath. Simultaneous approach NA below 12°C (52°F).

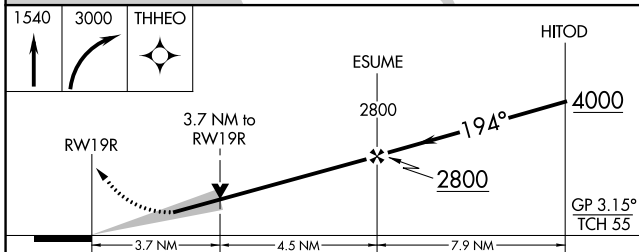
MISSED APPROACH: Climb to 1540 then climbing right turn to 3000 direct THHEO and hold.

| | | | | | |
|---|--------------------------------------|---|-------------------------|--------------------------|-------|
| D-ATIS 113.7 115.8 118.85 | NORCAL APP CON 134.5 338.2 | SAN FRANCISCO TOWER 120.5 269.1 | GND CON 121.8 | CLNC DEL 118.2 | CPDLC |
|---|--------------------------------------|---|-------------------------|--------------------------|-------|

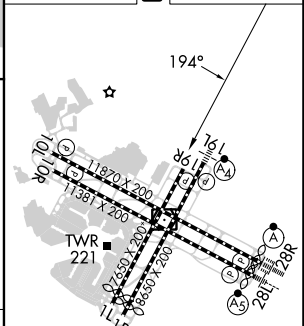


SW-2, 05 SEP 2024 to 03 OCT 2024

SW-2, 05 SEP 2024 to 03 OCT 2024



| | | |
|---------|----------|---------|
| ELEV 13 | D | TDZE 11 |
|---------|----------|---------|



| CATEGORY | A | B | C | D |
|--------------|---------------------------|---------------------------|--------------|---------------|
| LPV DA | 1005-4 | | 994 (1000-4) | |
| LNAV/VNAV DA | 878-2½ | | 867 (900-2½) | |
| LNAV MDA | 1320-1¼ 1309 (1400-1¼) | 1320-1½ 1309 (1400-1½) | 1320-3 | 1309 (1400-3) |

TDZ/CL Rwy 19L and 28R
REIL Rwy 1L, 1R and 10L
HIRL all Rwy