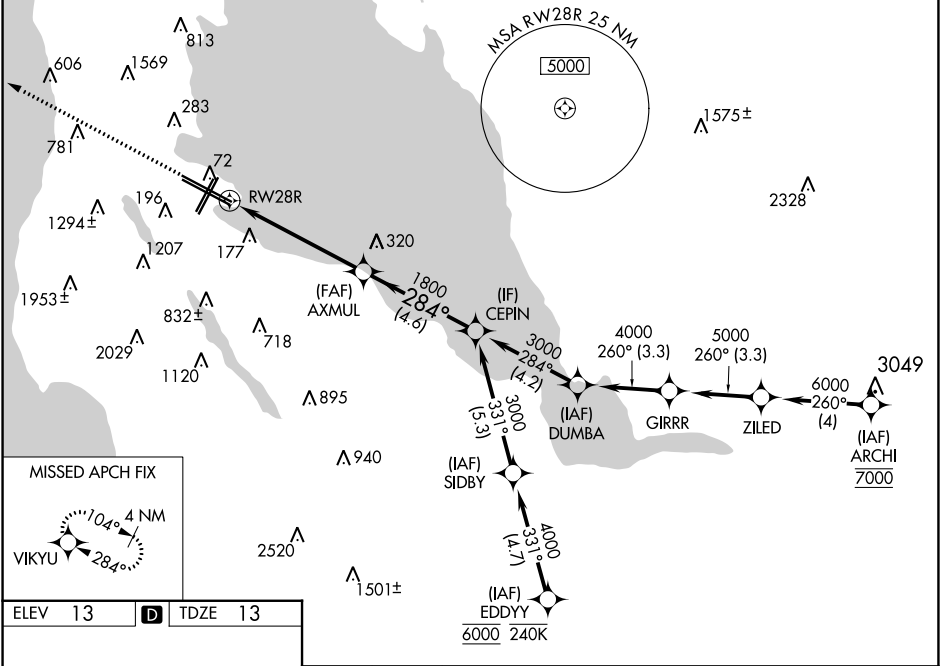


WAAS CH 48803 W28A	APP CRS 284°	Rwy Idg TDZE Apt Elev	11236 13 13
--	------------------------	-----------------------------	--

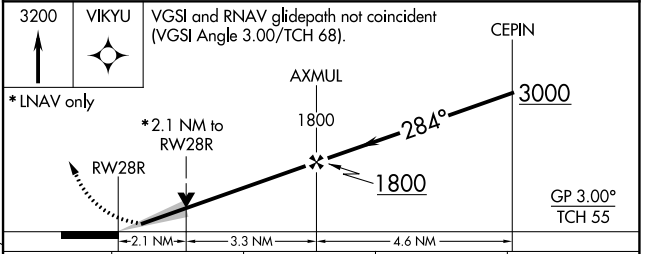
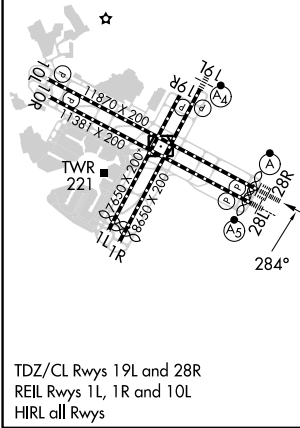
RNAV (GPS) Z RWY 28R

SAN FRANCISCO INTL (SFO)

RNP APCH.		ALSF-2		MISSED APPROACH: Climb to 3200 direct VIKYU and hold, continue climb-in-hold to 3200.	
<p>▼ Circling NA to Rwys 10L, 10R, 19L, and 19R. Circling Rwy 1L, 1R NA at night. For uncompensated Baro-VNAV systems, LNAV/VNAV NA below 3°C or above 54°C. For inop ALS, increase LNAV/VNAV all Cats visibility to 1½ SM, increase LNAV Cat C/D visibility to 2 SM.</p>					
D-ATIS 113.7 115.8 118.85	NORCAL APP CON 134.5 338.2	SAN FRANCISCO TOWER 120.5 269.1	GND CON 121.8	CLNC DEL 118.2	CPDLC



ELEV 13	D	TDZE 13
---------	----------	---------



CATEGORY	A	B	C	D
LPV DA		213/18	200 (200-½)	
LNAV/VNAV DA		642-1⅓	629 (700-1⅓)	
LNAV MDA	760/24 747 (800-½)	760/40 747 (800-¾)	760-1¾	747 (800-1¾)
C CIRCLING	760-1 747 (800-1)	960-1¼ 947 (1000-1¼)	1560-3 1547 (1600-3)	NA

SW-2, 05 SEP 2024 to 03 OCT 2024

SW-2, 05 SEP 2024 to 03 OCT 2024