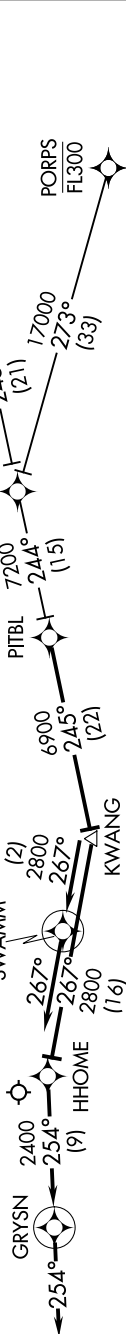


SANTA BARBARA APP CON  
120.55 319.15  
ATIS  
132.65

- NOTE: RADAR required.
- NOTE: RNAV 1.
- NOTE: DME/DME/IRU or GPS required.
- NOTE: Turboprop and turboprop aircraft only.
- NOTE: Landing Rwy 7 expect to cross GRYSN at 4000.
- NOTE: For non GPS-equipped aircraft, FIM must be operational.



NOTE: Chart not to scale.

ARRIVAL ROUTE DESCRIPTION

- HECTOR TRANSITION (HEC.PITBL1)
- PORPS TRANSITION (PORPS.PITBL1)

LANDING RUNWAY 7: From PITBL on track 245° to KWANG, then on track 267° to HHOME, then on track 254° to GRYSN, then on track 254°. Expect RADAR vectors to final approach course.

LANDING RUNWAY 25: From PITBL on track 245° to KWANG, then on track 267° to SWAMM, then on track 267°. Expect RADAR vectors to final approach course.