


LOC/DME I-SMX	APP CRS	Rwy Idg	<b>8004</b>
<b>108.9</b>	<b>120°</b>	TDZE	<b>230</b>
Chan <b>26</b>		Apt Elev	<b>261</b>

# ILS or LOC RWY 12

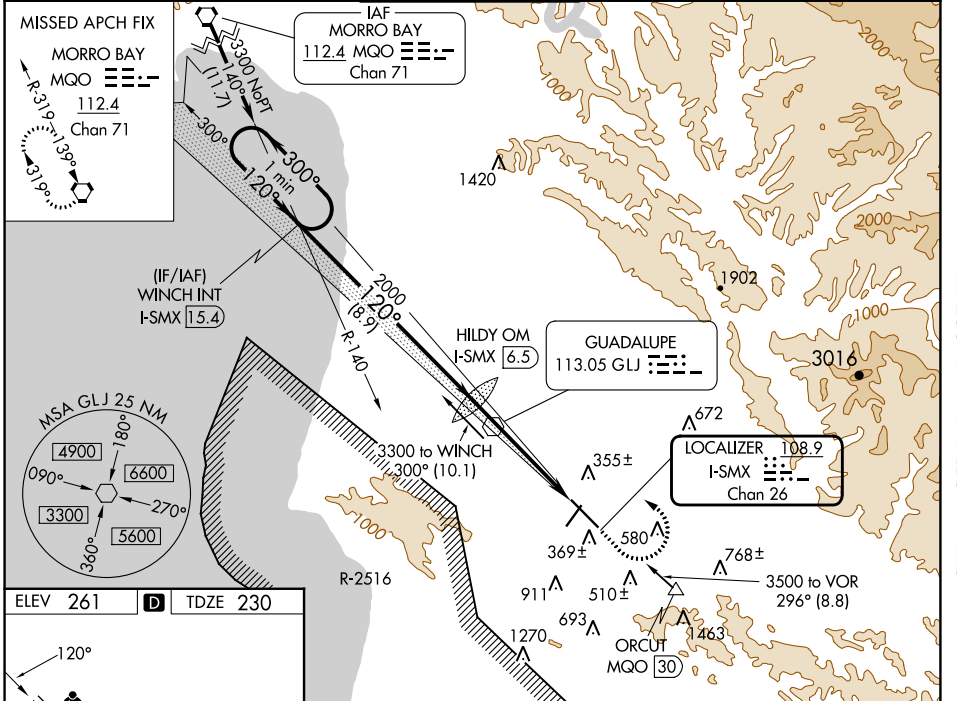
SANTA MARIA PUB/CAPT G ALLAN HANCOCK FLD (SMX)

**⚠** Night Landing: Rwy 2 NA. VDP NA when using San Luis Obispo altimeter setting. When local altimeter setting not received, use San Luis Obispo altimeter setting and increase DA to 489 feet; increase all MDA 60 feet and S-LOC visibility Cat C and D to RVR 5500. For inop MALS, increase S-LOC 12 Cat C/D visibility to 1½ mile.  
 # RVR 1800 authorized with use of FD or AP or HUD to DA; NA when using San Luis Obispo altimeter setting.

**MALS**  


**MISSED APPROACH:**  
 Climb to 800, then climbing left turn to 5000 direct MQO VORTAC and hold.

ATIS <b>121.15</b>	SANTA BARBARA APP CON* <b>124.15 327.8</b>	SANTA MARIA TOWER* <b>118.3 (CTAF) 239.25</b>	GND CON <b>121.9</b>	UNICOM <b>122.95</b>
-----------------------	---	--	-------------------------	-------------------------



ELEV 261	<b>D</b>	TDZE 230
----------	----------	----------

Knots	60	90	120	150	180
Min:Sec	5:00	3:20	2:30	2:00	1:40

WINDCH One Minute Holding Pattern I-SMX 1.5.4	HILDY OM I-SMX 6.5	800	5000	MQO
3300	1886	↑	↻	⬡
GS 3.00° TCH 55	2000	* I-SMX 2.7 I-SMX 1.5		
8.9 NM		3.8 NM		1.2 NM
CATEGORY	A	B	C	D
S-ILS 12#	430/24 200 (200-½)			
S-LOC 12	680/24 450 (500-½)		680/50 450 (500-1)	
CIRCLING	860-1 599 (600-1)	1000-1 739 (800-1)	1420-3 1159 (1200-3)	1520-3 1259 (1300-3)

SW-3, 05 SEP 2024 to 03 OCT 2024

SW-3, 05 SEP 2024 to 03 OCT 2024